



South Nottinghamshire
Transformation Partnership

Transforming Care in South Nottinghamshire



Rebecca Larder
Director of Transformation



Context

- An unsustainable system of care
- People with frailty and complex needs:
 - 10% of urgent care service users
 - 40% of costs
 - Sub-optimal and fragmented care
 - Opportunity to improve experience and outcomes
 - Opportunity to save approximately £20 million



Case for change



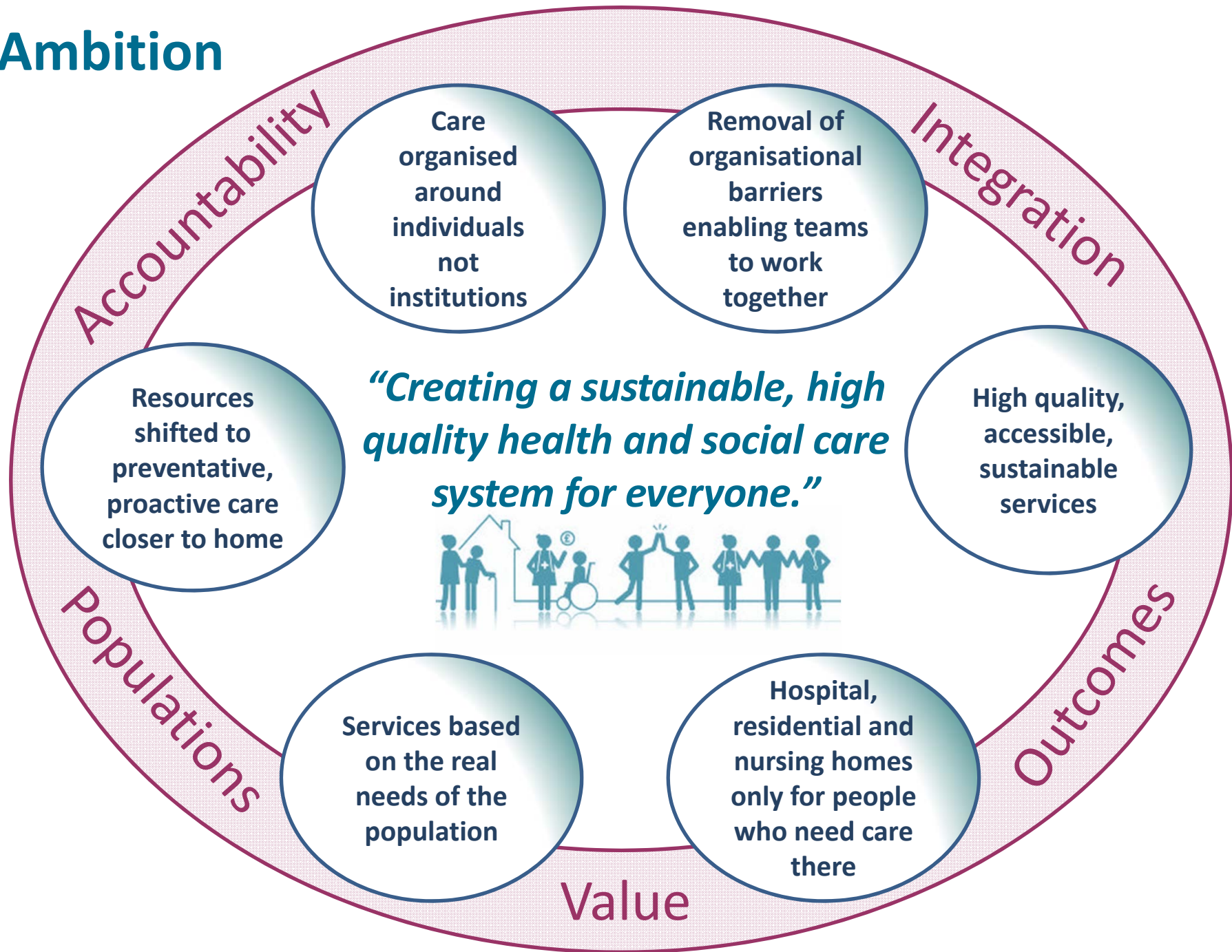
- Local people want:
 - Support to stay well and independent
 - Involvement in decisions about their care
 - More care provided closer to home
 - More joined-up services
- Demographic changes:
 - 5% increase in population by 2021
 - 11% increase in over 65s by 2021
- Advances in medicine and technology
- Economic context
 - £140 million financial gap



South Nottinghamshire



Ambition



Leading edge mind-sets



Outcomes: From process measures and targets to improving outcomes that matter to the population

Populations: From institutional care (primary, secondary) to a focus on whole pathways for defined population groups

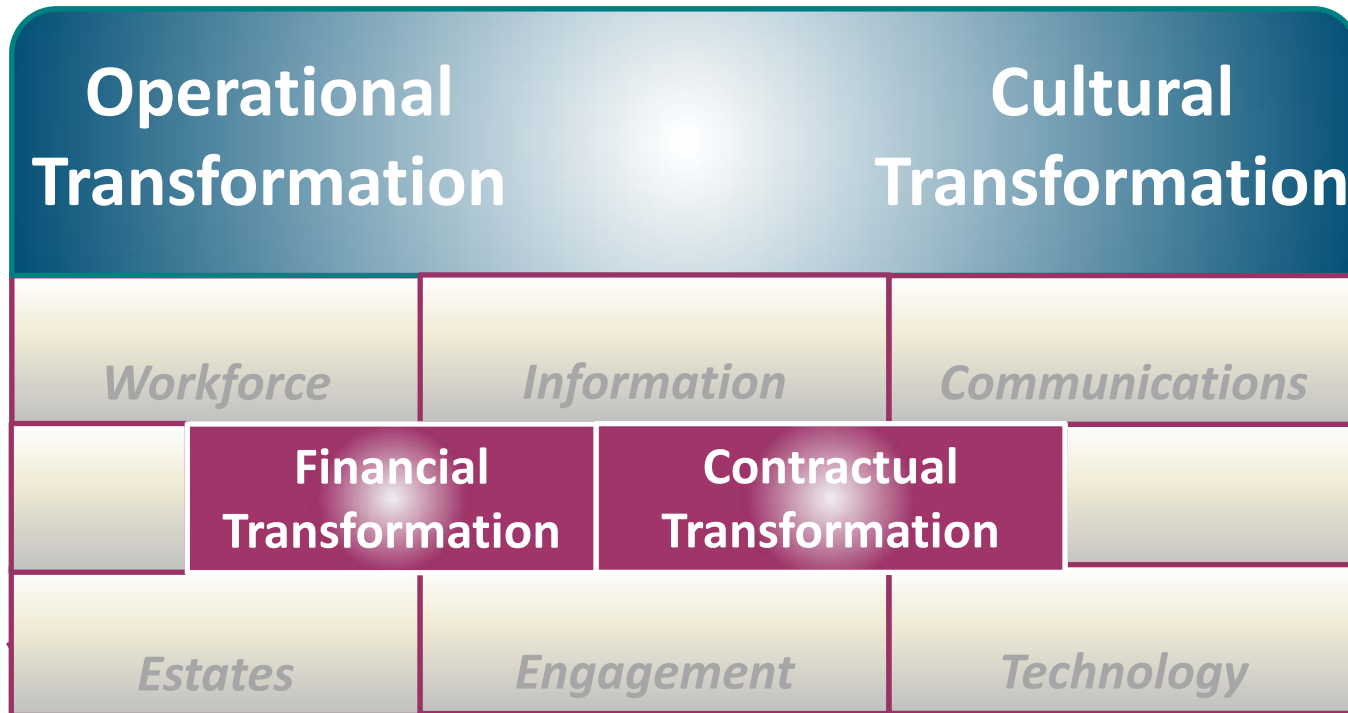
Value: From volume to value with a focus on prevention and proactive care

Integration: From fragmented care organised around professional groups and organisations to joined up services around the needs of service users

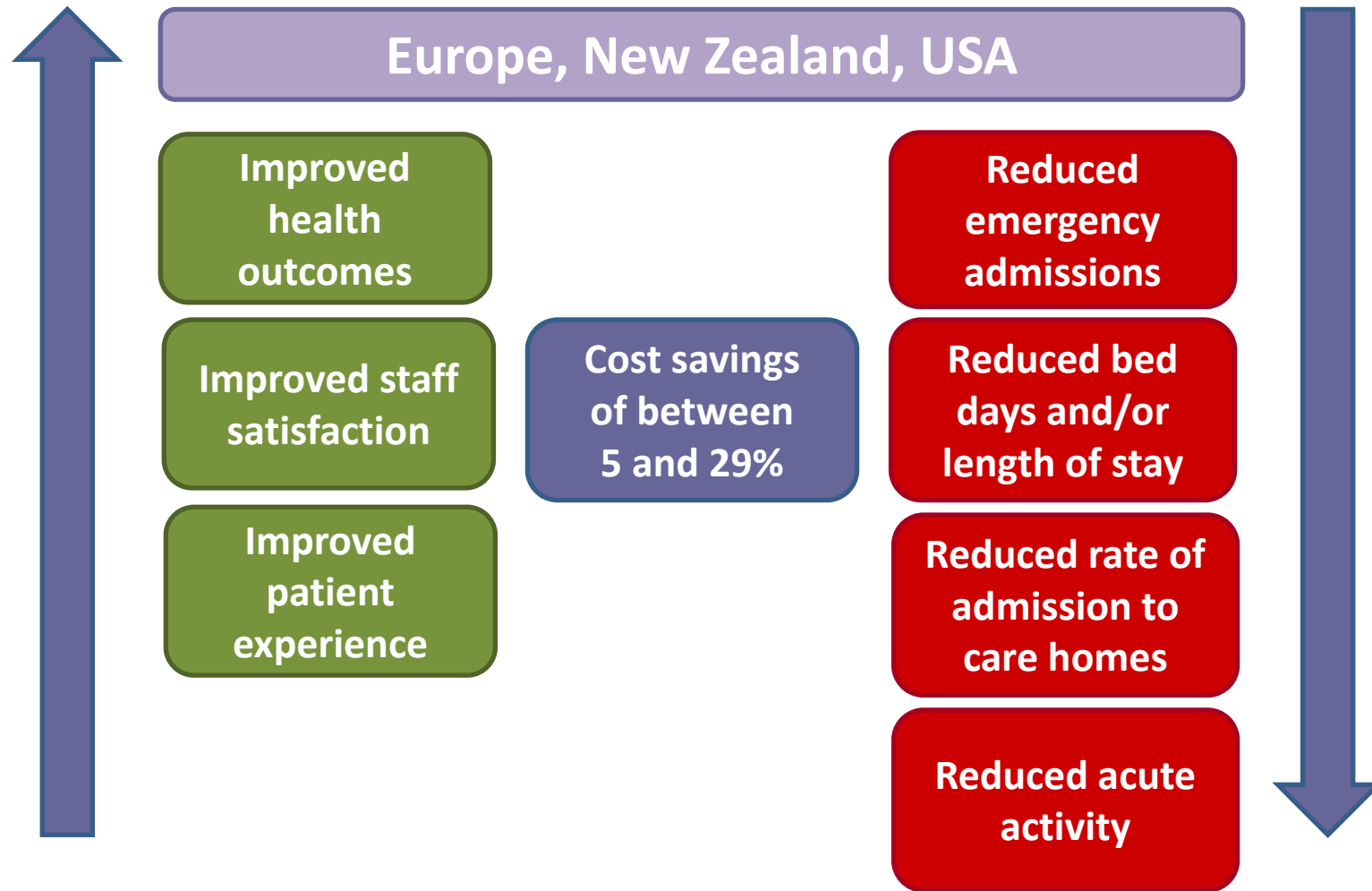
Accountability: To service users/citizens, to each other and to the success of the system



Transformational change



International evidence



Developing our plans



- Strategic outline case (SOC) for a new system of care
- Confirm case for change / strategic context
- Consider wide range of options
- Appraisal and analysis of short-listed options
- Provide an early indication of the preferred way forward subject to further engagement / consultation
- Patients, services users and carers actively engaged in developing and appraising the options
- Potential need for future consultation



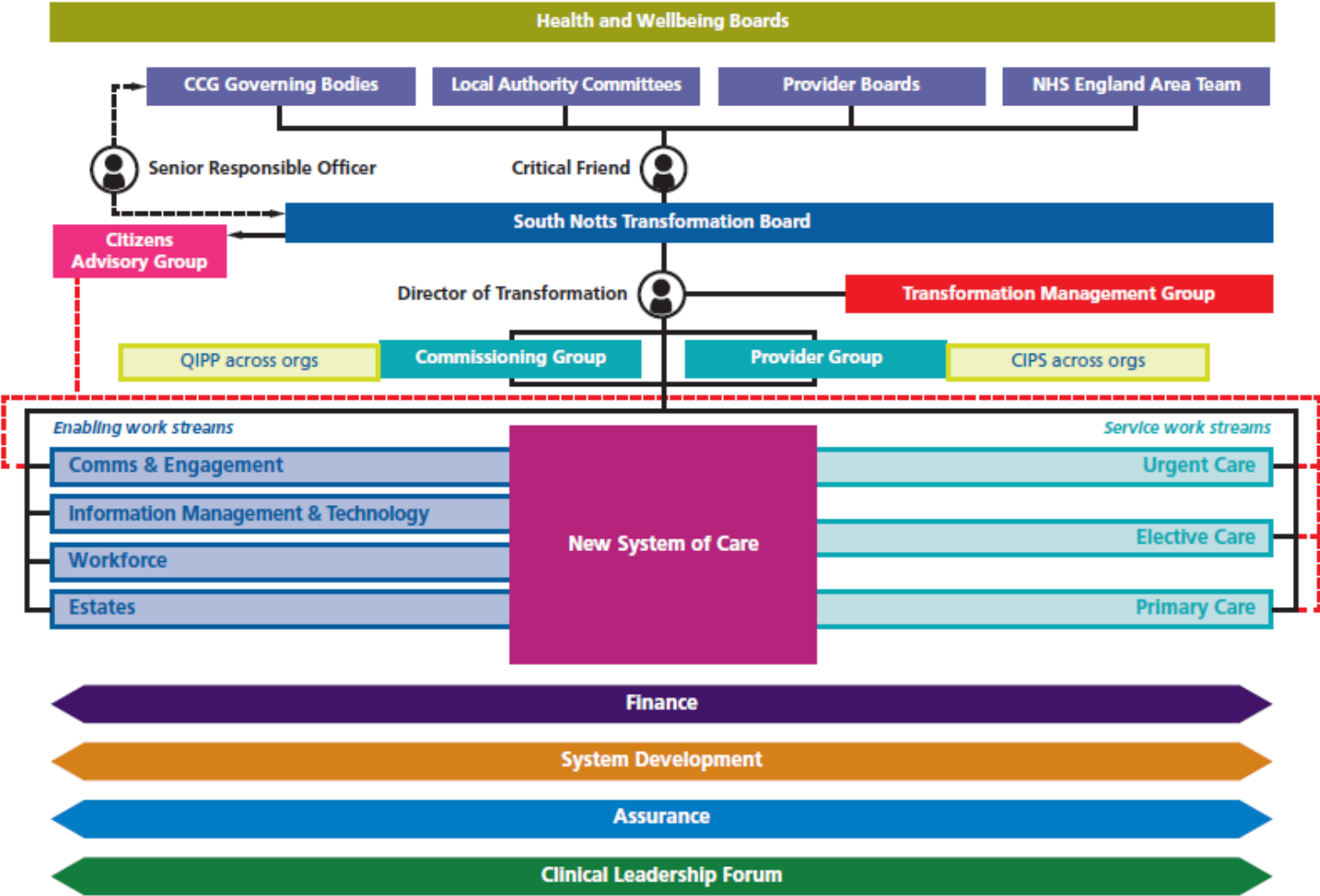
Citizen engagement



- South Nottinghamshire Transformation Board
 - Lay Chair, citizen representative and Healthwatch
- Citizens Advisory Group
 - Citizen representative from each partner organisation and Healthwatch
- Engagement Group
 - Engagement leads from partner organisations
- Service work-streams
 - Citizen leaders



Governance arrangements



Today

- Share the work of the South Nottinghamshire Transformation Partnership
- Seek advice on the level and timing of engagement / consultation activities as plans are developed in more detail
- Request the opportunity to share the emerging case for change and options prior to consideration by the partner boards (or equivalent).



Thank you...
...questions?

