

AREA 2 COMMITTEE
19 February 2014

Title of paper:	WARD PERFORMANCE REPORTS - Q3 2013/14	
Director(s)/ Corporate Director(s):	Andy Vaughan, Director of Neighbourhood Services	Wards affected: Basford and Bestwood
Report author(s) and contact details:	Heidi May, Locality Manager heidi.May@nottinghamcity.gov.uk 0115 8833737 Gursharan Singh Nijran – NDO, Basford gursharan.Nijran@nottinghamcity.gov.uk 0115 8833734 Dale Griffin – NDO, Bestwood dale.Griffin@nottinghamcity.gov.uk 0115 8833736	
Other colleagues who have provided input:	Dave Halstead, Head of City Services dave.halstead@nottinghamcity.gov.uk Leslie Marriott, Crime and Drugs Partnership Analyst leslie.marriott@nottinghamcity.gov.uk	
Date of consultation with Portfolio Holder(s) (if relevant)		
Relevant Council Plan Strategic Priority:		
Cutting unemployment by a quarter		<input checked="" type="checkbox"/>
Cut crime and anti-social behaviour		<input checked="" type="checkbox"/>
Ensure more school leavers get a job, training or further education than any other City		<input checked="" type="checkbox"/>
Your neighbourhood as clean as the City Centre		<input checked="" type="checkbox"/>
Help keep your energy bills down		<input checked="" type="checkbox"/>
Good access to public transport		<input checked="" type="checkbox"/>
Nottingham has a good mix of housing		<input checked="" type="checkbox"/>
Nottingham is a good place to do business, invest and create jobs		<input checked="" type="checkbox"/>
Nottingham offers a wide range of leisure activities, parks and sporting events		<input checked="" type="checkbox"/>
Support early intervention activities		<input checked="" type="checkbox"/>
Deliver effective, value for money services to our citizens		<input checked="" type="checkbox"/>
Recommendation:		
1	That the Area Committee note and comment on the Ward Performance Reports for quarter 3 2013/14. Note - appendices A and B show the ward summaries for both Basford and Bestwood wards. appendices C and D show the ward priorities and community engagement for the Basford and Bestwood wards respectively.	

Summary of issues (including benefits to citizens/service users):

The ward performance reports provide updates on key issues and themes which link back to local priorities and the strategic themes in the Nottingham Plan 2020. The reports provide summary updates on the following key themes:

- Ward priorities
- Community engagement

- Finance
- Safer theme - Crime and anti social behaviour (ASB)
- Neighbourhood theme – Cleansing and Environmental issues
- Working theme - Unemployment rates
- Housing
- Community Protection
- Fire
- Health Theme – local health priorities

The following is a brief summary by the respective Ward Neighbourhood Development Officers highlighting key issues:

WARD: BASFORD, (Park Lane, Stockhill and Whitemoor Beats) Neighbourhood Development Officer, Gursharan Singh Nijran

Key Successes

- The parking restrictions on the Ladbrooke Crescent area have now been introduced to restrict parking by staff and students from New College Nottingham, Basford Hall Campus.
- The Leader Listens event led to a number of issues being highlighted, all of which were quickly actioned by partners.
- Engagement with local employers to promote the Councils apprenticeship scheme/jobs fund.

What are the emerging issues?

- They have been increases in a range of crime activities in recent months. However, year to date figures reveal that we are still on target to meet our reductions. We will be doing this increasing patrols and community liaison around the effected areas and action plans are in place to challenge these increases.
- Fly tipping has also increased and NAT will put target the areas effected.

Events that have happened

- New, permanent Christmas tree was planted on Broad Walk to create a focus for future Christmas events in Basford.
- A successful Leader Listens session was held at the Basford Miners welfare.

Events Planned

- A Budget Consultation event for Area 2 in early February.
- Community Clean up of the twitchells around Ellis Guilford.
- Jobs Fair at the Highbury Vale gym.

What is the Neighbourhood Action Team (NAT) focussing its work on?

- NAT is prioritising action to reduce garage and shed break-ins around the Whitemoor and Stockhill beat boundaries. Patrols have been increased and reassurance given to local residents. This has included crime prevention advice and in partnership with the CDP, issuing of timer switches to vulnerable residents.
- Improving the environment and around the estates and a regular rota of anti dog fouling patrols around streets which continue to cause problems. It will also be challenging the increase in fly tipping.

- The North Locality has targets to reduce criminal damage, shop thefts and violence. Although there have been increases in a number of crimes figures this month, year to date figures show that we are target to meet these reductions.

The figures given below are a comparison between November 2012 and November 2013 data.

- **All Crime:** is down by 2% compared to the same month in the previous year and 3% down for the year to date period. Criminal damage is down 10% (2 crimes), shop thefts up by 67% (2 crimes) and violent crime up by 60% (9 crimes).
- **All ASB:** was up by 73% (increase of 25 calls) compared to the same month in the previous year, but down 6% for the year to date period.
- There are now 632 (8.6%) households in Basford signed up to the **ALERT** system.
- **Cleanliness Index:** score is at 89%. The target set for the city centre is 86% and the average figure for Basford continues to show a slow but positive improvement.
- **Graffiti Reports:** 4 incidents (decrease of 1) compared to the same month in the previous year.
- **Fly Tipping:** 20 incidents (increase of 6).
- **Community Protection:** 0 Court outcomes in December 2013.
- **Fire:** Deliberate fires are down 41% on the year to date.

WARD: Bestwood (Bestwood Estate, Bestwood Park and Top Valley Beats) Neighbourhood Development Officer - Dale Griffin

Key Successes

During this quarter (October 2013-December 2013) there have been a number of successes including:

- Engagement with local employers to promote NCC apprenticeship scheme and jobs fund.
- Travel Right and Right Track - fix it, refurbish, keep bike project.
- Joint youth provision provided by Family Community Team, Right Track, Local Churches and Travel Right.
- Revised neighbourhood questionnaire to capture community intelligence and identify local volunteers.
- Community events organised by the three community centres including Halloween party (Leen Valley), Christmas Dinner (Leen Valley), Christmas Party (Bestwood Estate), We'll meet again 1940's event (Bestwood Park).
- Bestwood Christmas Lights – highest attendance to date with several hundreds in attendance.
- Commitment from Community Payback to assist with problem hotspot areas on a regular basis.

What are the emerging issues?

- Whilst crime reduced in both October and November, December has shown an increase based on 2012 figures. For the year to date as of December Bestwood Ward is over by 74 crimes or 10.08%. Despite this Bestwood is still ranked as the 5th safest ward in the city behind the Wollaton and Clifton areas. The highest volume crime in December was violent crime for which the majority is domestic related.
- December saw ASB increase compared to December 2012. Detail of previous years police data and current data confirms the reason for the perceived increase as a result of noise complaints for which the Police now have a responsibility for. The police are working with Community Protection and Nottingham City Homes where ever possible to reduce complaints/issues and provide solutions.

- Fly tipping has continued to show an increase in this quarter. Work is being done to target hot spot areas including Churchfield Plantations, Padstow boundary with Peary Close area and Belconnen area.
- The NAT will be looking at how we can further support our residents locally who are impacted upon by welfare reform.

Events that have happened

- Leen Valley Halloween Party.
- Leen Valley Christmas Party.
- Bestwood Park We'll Meet Again 1940's Event.
- Bestwood Estate Christmas Party.
- Bestwood Christmas Lights Turn On event and Recycling Drop-off.

Events Planned

- Budget Consultation for Bestwood Residents at Bestwood Park Church (6 February at 6pm).
- Area 2 Budget Consultation at Southwark School (5 February at 6pm).
- Bestwood Estate Community Centre Volunteer Evening (29 January at 6.30pm).
- Bestwood's Got Talent auditions and final.
- Southglade Park Live Event (31 July 2014).
- Big Wood Day of Action – various community activities across the ward including 6 ward walks

What is the Neighbourhood Action Team (NAT) focussing its work on?

The NAT will be focussing its work upon:

- Improving the visual appearance of neighbourhoods particularly fly tipping.
- Reducing crime.
- Supporting residents affected via welfare reform.
- Continuance of the Love You Love Bestwood Campaign – Bestwood's Got Talent, Big Wood Year 7 community day and looking into the feasibility of a Bestwood Carnival.

The figures given below show some key statistical points from this quarter:

- **Crime:** was up by 16 more crimes in December compared to December 2012.
- **ASB:** was up by 21 incidents in December compared to December 2012.
- **Cleanliness Index:** score is at 86 (Oct 2013). The target set for the city centre is 86.
- **Graffiti Reports:** 6 incidents (increase of 4) compared to the same month October in the previous year.
- **Fly Tipping:** 49 incidents (increase of 23) compared to the same month October in the previous year.
- **Unemployment:** 831 unemployed (7.3 rate) – ranked 4th highest in City for JSA claimants in October 2013.
- **Community Protection:** 1 Statutory Notice for Environment in November 2013.
- **Fire:** There has been a reduction of 100% deliberate primary and secondary fires in the ward in November 2013, (5 fires), compared to last year.

1. REASONS FOR RECOMMENDATIONS

- 1.1 Ward performance reports provide a descriptive and statistical picture of what is happening at a ward level and invite community representatives to comment, debate, challenge and identify how they can add value to improve their neighbourhoods.

- 1.2 Ward performance reports also monitor progress in the wards and act as a catalyst for debate about the key performance issues impacting upon the ward quarterly.

2. BACKGROUND (INCLUDING OUTCOMES OF CONSULTATION)

- 2.1 Neighbourhood Working has been important for a number of years in Nottingham as a means of engaging better with citizens and to drive forward service improvement.
- 2.2 The Nottingham Plan has a goal that 'public service delivery will be better integrated and appropriately devolved, ensuring more accessible and responsive services for all, and giving residents more control over what happens in their neighbourhoods'; the Ward Performance Reports help to support this.
- 2.3 The Ward Performance Reports capture work at a local level to support the Nottingham Plan; it is a short summary of key updates on priorities and issues in the ward. More detailed implementation plans sit behind, the report such as the Ward plans and other partner's implementation plans.
- 2.4 The North Locality Board has been established now since September 2012. It delivers a multi agency/partnership approach to managing the locality, providing an overview of area performance and policing priorities, performance management and problem solving of key challenges. In the north, this has included a focus on parking issues, cannabis, theft from shops, criminal damage and violent crime, including domestic violence. Area Chairs, or their nominated representatives are invited. Minutes are issued to all Ward Councillors.
- 2.5 The Ward Performance Reports are co-ordinated by Neighbourhood Development Officers every quarter, with the data analysis undertaken by the Crime and Drugs Partnership.

3. OTHER OPTIONS CONSIDERED IN MAKING RECOMMENDATIONS

- 3.1 None

4. FINANCIAL IMPLICATIONS (INCLUDING VALUE FOR MONEY/VAT)

- 4.1 None

5. RISK MANAGEMENT ISSUES (INCLUDING LEGAL IMPLICATIONS AND CRIME AND DISORDER ACT IMPLICATIONS)

- 5.1 Consideration of the above is integral to all the activity that is contained in this report. Reduction of crime and disorder is a key goal of a large proportion of the initiatives described.

6. EQUALITY IMPACT ASSESSMENT

- 6.1 Not needed as the report does not contain proposals or financial decisions.

7. LIST OF BACKGROUND PAPERS OTHER THAN PUBLISHED WORKS OR THOSE DISCLOSING CONFIDENTIAL OR EXEMPT INFORMATION

- 7.1 Neighbourhood Working Framework 2012 CLT report

8. PUBLISHED DOCUMENTS REFERRED TO IN COMPILING THIS REPORT

8.1 None



NOTTINGHAMSHIRE
POLICE
PROUD TO SERVE



NOTTINGHAMSHIRE
Fire & Rescue Service
Creating Safer Communities



Nottingham
City Council



Bestwood Report

January 2014

Appendix A

Ward Summary

Crime data is shown below for both the current month compared to last year and the year to date.

BESTWOOD	Dec-12	Dec-13	Change	% Change	Prev YTD	YTD	Change	% Change
Autocrime	8	10	2	25.00%	45	58	13	28.89%
Burglary	8	9	1	12.50%	85	87	2	2.35%
Burglary Other	4	2	-2	-50.00%	37	31	-6	-16.22%
Damage	18	18	0	0.00%	164	166	2	1.22%
Drugs	5	2	-3	-60.00%	53	54	1	1.89%
Fraud	3	1	-2	-66.67%	11	7	-4	-36.36%
Other	2	5	3	150.00%	23	36	13	56.52%
Personal Robbery	1	1	0	0.00%	16	18	2	12.50%
Robbery Business	1	0	-1	-100.00%	3	5	2	66.67%
Sexual	1	1	0	0.00%	11	10	-1	-9.09%
Theft	5	14	9	180.00%	71	104	33	46.48%
Theft from Person	0	0	0	0.00%	8	3	-5	-62.50%
Threats	2	3	1	50.00%	25	35	10	40.00%
Violence	23	31	8	34.78%	182	194	12	6.59%
Total	81	97	16	19.75%	734	808	74	10.08%
ASB	40	61	21	52.50%	491	643	152	30.96%

The summary below shows only year to date figures, and in the case of public realm and fire data, will generally be a month in arrears.

Type	YTD 12/13	YTD 13/14	Volume +/-	% Change
Domestic Violence	634	733	114	42%
Night Time Economy Violence	54	26	-17	-5%
Hate Crime	46	69	3	1%
Deliberate Fires	258	205	-7	-1%
Cleanliness	1010	688	-15	-5%
Graffiti	381	708	-24	-34%
Fly-Tipping	1062	1663	0	0%

Priorities & Targets

The North Locality has targets to reduce Criminal Damage, Shop Theft and Violence. Performance against Targets is set out below for the Locality.

Locality Target Summary																
Locality	Crime Type	Apr-13	May-13	Jun-13	Jul-13	Aug-13	Sep-13	Oct-13	Nov-13	Dec-13	Jan-14	Feb-14	Mar-14	YTD	Proposed year end Position	+/- Target Position
North	Criminal Damage	146	141	127	132	167	134	134	126	125	130	130	130	1232	1623	-1
	Shop Theft	61	63	65	45	66	59	48	49	60	45	45	45	516	615	36
	Violence	163	165	197	188	171	148	141	146	153	140	140	140	1472	1864	28

Exception Reporting

Criminal Damage

Criminal Damage is showed no change compared to December 2012/13 and year to date 1.22% (2 offences) increase.

Shop Theft

Shop Theft offences continue to see an increase. The table below shows the wards individual theft categories on a monthly basis for the year to date, and compares them with the previous year to date.

Offence Category	Apr	May	Jun	Jul	Aug	Sep	Oct	Nov	Dec	YTD	2012/13 YTD
ABSTRACTING ELECTRICITY									1	1	1
THEFT FROM SHOP	2	10	6	7	3	3	2	4	7	44	7
THEFT IN DWELLING OTHER THAN AUTO MACHINE OR METER	3	2	2	3	2	3	7	4	2	28	20
THEFT OR UNAUTHORISED TAKING OF PEDAL CYCLE	2		1	1	1	1	1			5	14
THEFT OTHER	2	3	1	4	4	3	1	3	5	26	28
Theft Total	9	15	9	15	9	10	11	12	14	104	69

Violence

Violence continues to show a ward increase of 34.78% (8 offences) compared to December 2012/13.

All Crime

Bestwoods all crime statistics increased by 19.75% (16 more offences) with a Year to Date increase of 10.08%. A full breakdown of the crime rates for each ward can be found on page 6.

Crime Figures

Crime Types by Rate (per 1000 of population) of the 20 Wards – Figures are Year to Date 2013/14

WARD	ALL CRIME	AUTOCRIME	BURGLARY	DAMAGE	PERSONAL ROBBERY	THEFT	VIOLENCE
ARBORETUM	99.06	5.74	9.60	12.56	5.47	15.52	24.85
ASPLEY	67.76	5.96	5.45	11.80	0.91	10.55	17.25
BASFORD	57.44	7.10	5.43	9.87	1.23	10.43	13.39
BERRIDGE	62.46	7.24	5.84	9.17	1.07	14.21	12.49
BESTWOOD	48.23	3.46	5.19	9.91	1.07	6.21	11.58
BILBOROUGH	56.87	6.73	5.36	10.24	0.95	8.99	12.68
BRIDGE	64.90	3.59	1.64	8.31	1.23	26.04	11.69
BULWELL	88.38	5.69	5.08	18.51	1.92	21.97	17.21
BULWELL FOREST	53.84	3.53	4.04	10.06	1.47	14.25	10.65
CLIFTON NORTH	41.43	3.03	4.11	8.69	1.16	5.66	8.46
CLIFTON SOUTH	41.44	2.51	5.31	7.10	0.86	7.31	10.76
DALES	53.28	4.56	2.73	10.08	0.49	11.36	11.54
DUNKIRK AND LENTON	67.95	10.26	6.68	6.41	0.73	21.43	9.43
LEEN VALLEY	54.48	4.58	5.61	8.78	1.68	11.12	10.00
MAPPERLEY	56.42	7.64	4.48	7.83	0.57	10.73	10.67
RADFORD AND PARK	58.59	8.17	6.43	5.41	1.89	16.69	8.93
SHERWOOD	62.09	5.64	5.97	6.49	1.82	21.41	11.16
ST ANNS	66.80	4.65	3.79	12.10	3.79	7.30	18.61
WOLLATON EAST AND LENTON ABBEY	35.57	3.11	5.73	3.62	0.30	12.86	3.52
WOLLATON WEST	29.03	4.75	4.14	3.39	0.27	7.67	2.85
WARD AVERAGE	58.30	5.40	5.13	9.02	1.44	13.09	11.89

All ASB Figures

All ASB by Rate (per 1000 of population) of the 20 Wards)

WARD	RATE (PER 1000 OF POP.) Dec 2013
ARBORETUM	6.82
ASPLEY	3.40
BASFORD	3.64
BERRIDGE	2.36
BESTWOOD	3.64
BILBOROUGH	3.22
BRIDGE	3.08
BULWELL	3.65
BULWELL FOREST	2.79
CLIFTON NORTH	2.25
CLIFTON SOUTH	2.01
DALES	3.95
DUNKIRK & LENTON	1.47
LEEN VALLEY	3.92
MAPPERLEY	2.02
RADFORD & PARK	2.14
SHERWOOD	1.62
ST ANNS	5.23
WOLLATON EAST & LENTON ABBEY	0.80
WOLLATON WEST	0.47
WARD AVERAGE	2.92

	Highest Rate
	Second Highest Rate
	Third Highest Rate

Fire

Table: Volume of Deliberate Primary and Secondary Fires by Ward

		Fire Data							
Locality	Ward	Nov-12	Nov-13	Volume +/-	% Change	Ytd 12-13	Ytd 13-14	Volume +/-	% Change
Central	Arboretum	2	0	-2	-100%	13	18	5	38%
	Berridge	7	3	-4	-57%	35	29	-6	-17%
	Dunkirk and Lenton	1	2	1	100%	5	7	2	40%
	Radford and Park	1	1	0	0%	24	14	-10	-42%
	Sherwood	0	3	3		9	15	6	67%
	Wollaton East and Lenton Abbey	0	0	0		6	6	0	0%
	Wollaton West	0	0	0		2	3	1	50%
Central Locality		11	9	-2	-18%	94	92	-2	-2%
North	Aspley	1	0	-1	-100%	45	34	-11	-24%
	Basford	4	2	-2	-50%	40	26	-14	-35%
	Bestwood	5	0	-5	-100%	31	37	6	19%
	Bilborough	3	2	-1	-33%	34	19	-15	-44%
	Bulwell	6	7	1	17%	60	56	-4	-7%
	Bulwell Forest	0	1	1		28	12	-16	-57%
	Leen Valley	3	2	-1	-33%	20	20	0	0%
North Locality		22	14	-8	-36%	258	204	-54	-21%
South	Bridge	0	2	2		10	14	4	40%
	Clifton North	1	2	1	100%	10	9	-1	-10%
	Clifton South	2	1	-1	-50%	17	25	8	47%
	Dales	1	1	0	0%	6	13	7	117%
	Mapperley	2	0	-2	-100%	14	10	-4	-29%
	St. Anns	2	1	-1	-50%	22	23	1	5%
South Locality		8	7	-1	-13%	79	94	15	19%
Division		41	30	-11	-27%	431	390	-41	-10%

Note: Where ward boundaries overlap with the City Centre fires that occurred in the City Centre have been **included** in the ward figures.

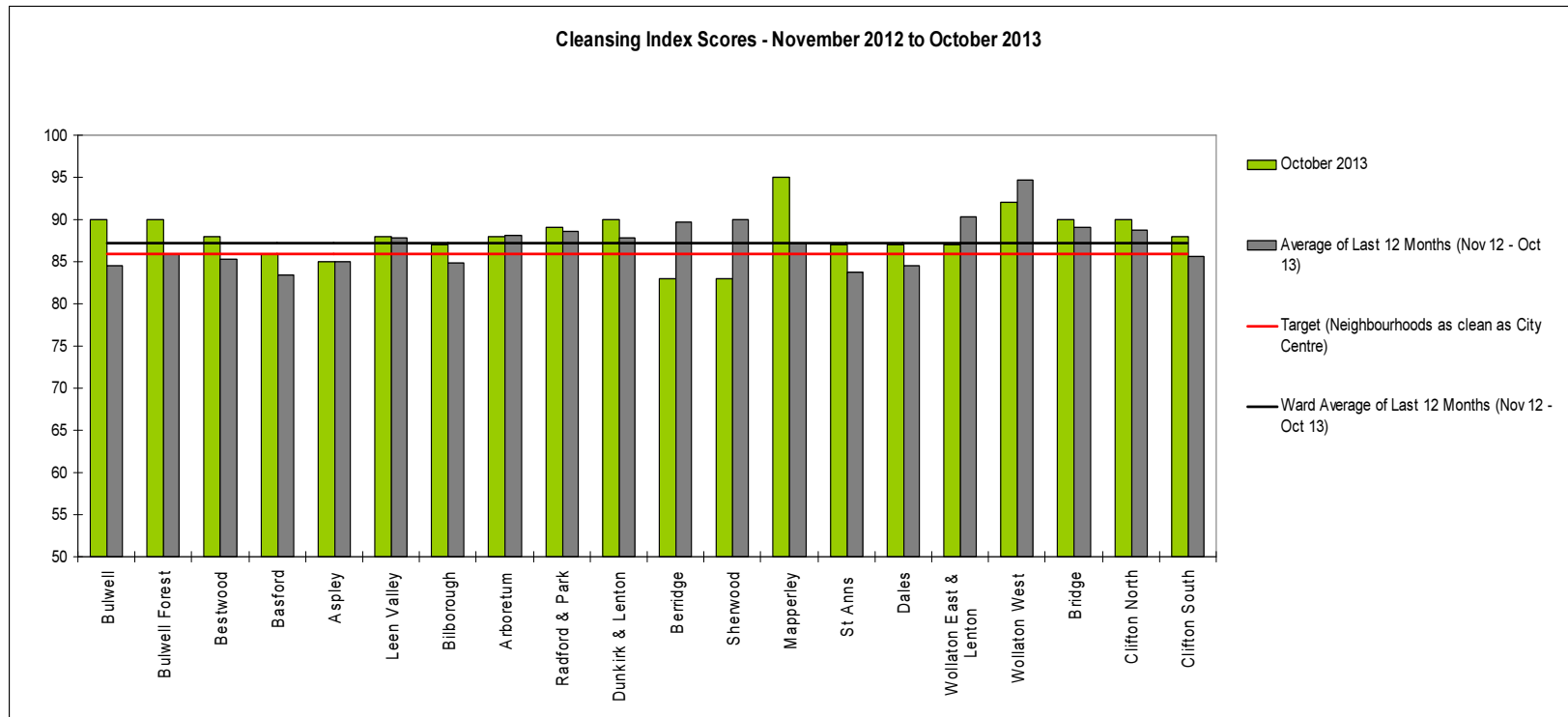
Community Protection

Data has been received from Community Protection and where postcodes have been listed these have been geo-coded and mapped to determine the Ward. All addresses relate to the address of the Perpetrator.

Community Protection data had not been received at the time this report was written.

For enquiries regarding Community Protection court outcomes please contact the Operational Manager for the locality.

Cleanliness Index



The “neighbourhood as clean as the city centre” benchmark target on cleanliness is to achieve a score of 86% in every ward. The 86% target is shown in red in the above graph.

To calculate the Cleanliness Index (CI) an agreed number of transects are surveyed across an area covering a range of land types. Each site surveyed is awarded a cleanliness grade based on a 7 point scale from A to D where Grade A: – no litter, and Grade D: - heavily littered. The maximum possible score of 100 is achieved when all sites achieve Grade A.

The Code of Practice for Litter and Refuse (COPLAR) requires councils to strive to reach an ‘acceptable’ standard of cleanliness (grade B or better) across the Council area. Grade A is the ultimate goal and is how a site should be immediately after sweeping but is almost impossible to maintain for any length of time. For example, a grade A site is completely free of litter – one cigarette butt takes it down to B+.

To achieve the manifesto commitment of Neighbourhoods as clean as the City Centre a target of 86 is required as that was the CI for the City Centre in May 2011. To give some context if all areas surveyed achieved a grade ‘B’ standard, this would equate to a cleanliness index of 67.

Cleanliness Index

Cleanliness Index
Score

86

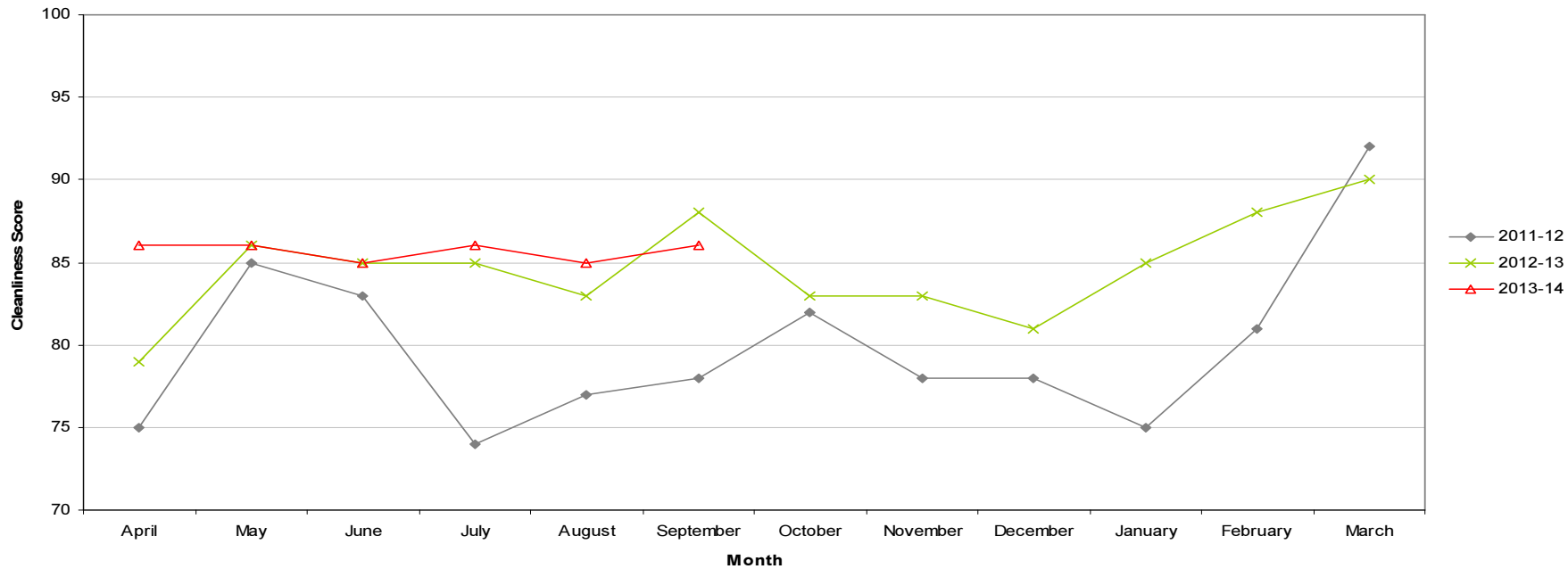
Performance compared to
previous year

Performance compared to
neighbourhoods target
of 86



- All data refers to a comparison with the previous year's month
- It is proposed that performance over time graphs be used for each indicator
- Historic data for comparison is not available for dog fouling

Cleanliness Index - Bestwood

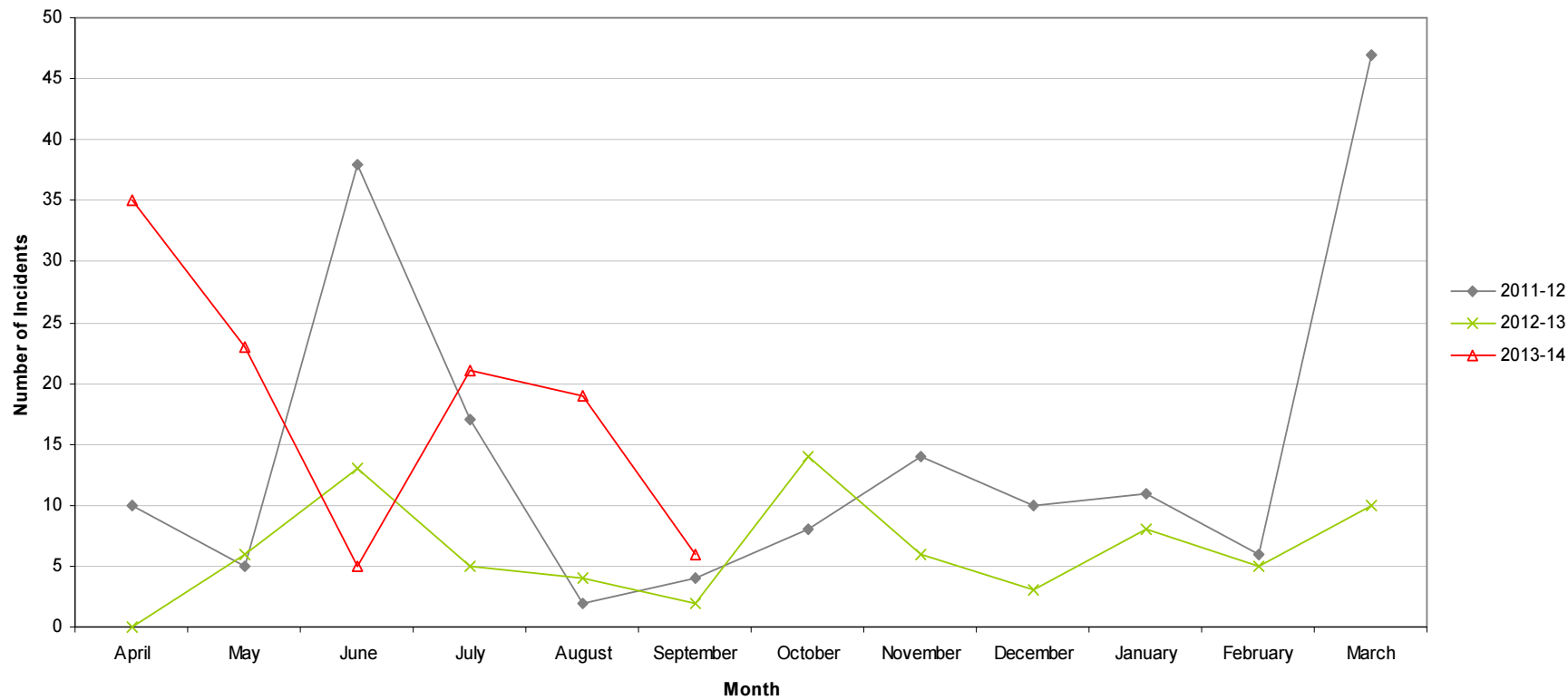


Graffiti Reports

- All data refers to a comparison with the previous year's month
- It is proposed that performance over time graphs be used for each indicator
- Historic data for comparison is not available for dog fouling

RED	6 incidents	Increase of 4
AMBER		
GREEN		

Incidents of Graffiti - Bestwood

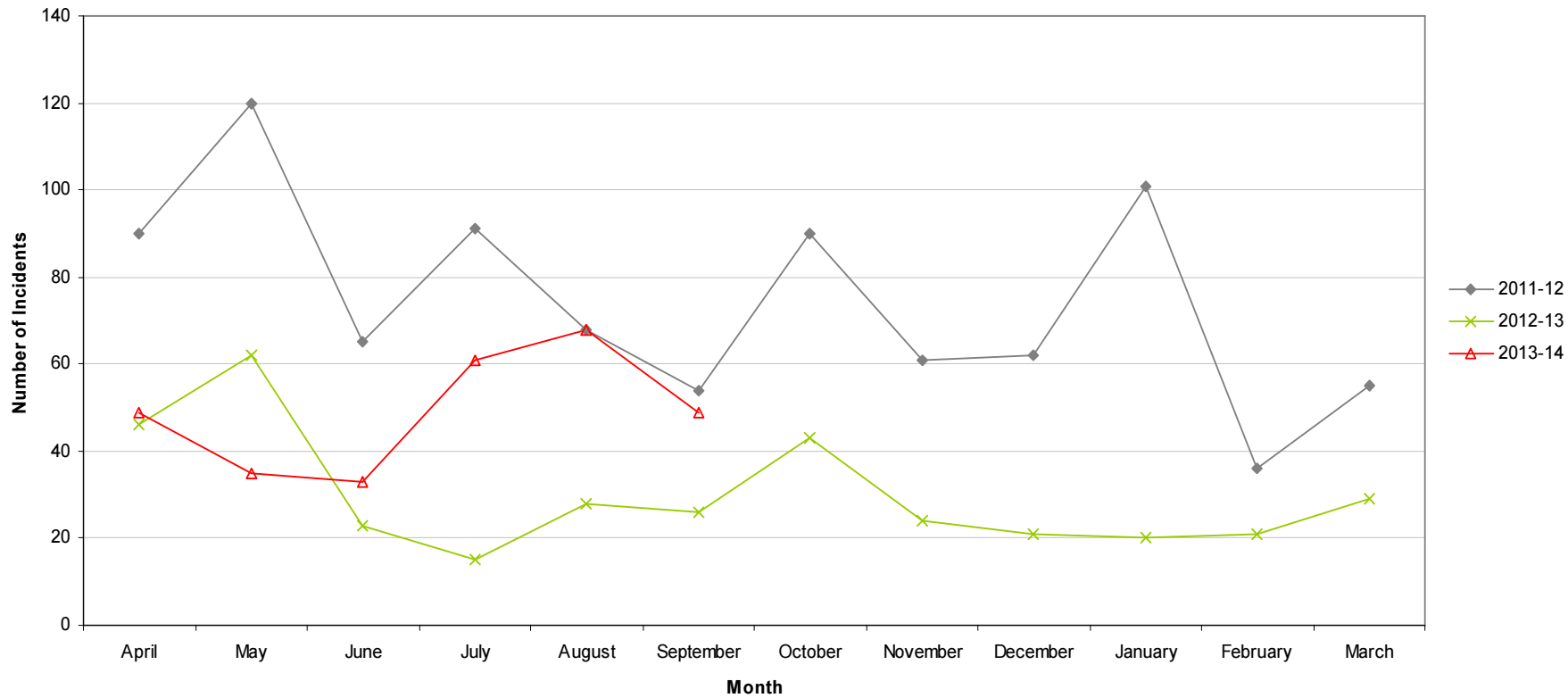


Fly Tipping

RED	49 incidents	Increase of 23
AMBE		
GREEN		

- All data refers to a comparison with the previous year's month
- It is proposed that performance over time graphs be used for each indicator
- Historic data for comparison is not available for dog fouling

Incidents of Fly Tipping - Bestwood



Housing

Ward Report - Bestwood

Generated on: 18 December 2013









BESW1 Anti-social behaviour



Performance indicator and definition	Target	2013/14			2012/13	2011/12
		Value	Status	Long Trend	Value	Value
% of ASB cases resolved – Bestwood <i>Note: This PI measures the proportion of ASB cases NCH has successfully resolved. Data for this PI is not available by ward and is reported by Housing Office.</i>	97.8%	99%			98.08%	97.09%
% of ASB cases resolved by first intervention – Bestwood <i>Note: This PI monitors how many ASB cases NCH resolved on the first intervention e.g. written warning. Data for this indicator is not available by ward and is reported by Housing Office.</i>	76%	86.87%			79.56%	
Number of new ASB cases – Bestwood <i>Note: Data for this PI is only available by Housing Office.</i>		81			138	240
Tenant satisfaction with the ASB service - Bestwood <i>Note: Data for this PI is only available by Housing Office.</i>	8	6.7			7.1	6.49

Housing

BESW4 Empty properties

Performance indicator and definition	Target	2013/14			2012/13	2011/12
		Value	Status	Long Trend	Value	Value
Average void re-let time (calendar days) – Bestwood Ward <i>Note: This PI measures how long it takes NCH to re-let empty properties from the end of the old tenancy to the start of the new tenancy</i>	25	42.66			34.42	27.47
Number of empty properties awaiting decommission – Bestwood Ward <i>Note: This PI shows the number of empty properties which will not be re-let and includes those being decommissioned and / or demolished.</i>		4			1	3
Number of lettable voids – Bestwood Ward <i>Note: Lettable voids are empty properties available for re-letting. They will receive repair work and then be re-let to a new tenant.</i>		34			35	40

BESW5 Tenancy sustainment

Performance indicator and definition	Target	2013/14			2012/13	2011/12
		Value	Status	Long Trend	Value	Value
Percentage of new tenancies sustained - Bestwood Ward <i>Note: This PI measures the number of new tenants who are still in their tenancy 12 months later.</i>	93.5%	91.77%			93.46%	

Housing

Key:



Performance on or exceeding target



Performance below target



Data only performance indicator



Performance has improved compared to two years ago



Performance has deteriorated compared to two years ago



Performance unchanged

Data prepared by Nottingham City Homes Performance Team

For more information please contact Jonathan Hurst, Performance Data Officer on 0115 9157368 or Marcus Parton, Performance Analyst on 0115 915715

Methodology

Data has not been audited or verified and therefore must only be used as a reflection of crime.

Crime data and ASB calls have been extracted from the Police systems and mapped to ascertain which Ward they occurred in.

Where a ward boundary overlaps with the City Centre, crime data and ASB calls relating to the City Centre have been removed.

Where possible the most recent data is used, although for some areas this may be a month further in arrears.

Discussions continue with other agencies regarding what further data can be included.



NOTTINGHAMSHIRE
POLICE
PROUD TO SERVE



NOTTINGHAMSHIRE
Fire & Rescue Service
Creating Safer Communities



Nottingham
City Council



NOTTINGHAMSHIRE



Basford NAT Report

January 2014

Appendix B

Ward Summary

Crime data is shown below for both the current month compared to last year and the year to date.

BASFORD	Dec-12	Dec-13	Change	% Change	Prev YTD	YTD	Change	% Change
Autocrime	7	15	8	114.29%	91	115	24	26.37%
Burglary	10	12	2	20.00%	72	88	16	22.22%
Burglary Other	6	2	-4	-66.67%	45	50	5	11.11%
Damage	20	18	-2	-10.00%	160	160	0	0.00%
Drugs	6		-6	-100.00%	52	30	-22	-42.31%
Fraud	4	5	1	25.00%	30	16	-14	-46.67%
Other	3	2	-1	-33.33%	24	22	-2	-8.33%
Personal Robbery	3	0	-3	-100.00%	26	20	-6	-23.08%
Robbery Business	1	0	-1	-100.00%	2	4	2	100.00%
Sexual	0	2	2	200.00%	14	9	-5	-35.71%
Theft	15	11	-4	-26.67%	158	169	11	6.96%
Theft from Person	1	1	0	0.00%	11	7	-4	-36.36%
Threats	3	4	1	33.33%	23	24	1	4.35%
Violence	15	24	9	60.00%	194	217	23	11.86%
All Crime Total	94	96	2	2.13%	902	931	29	3.22%
ASB	34	59	25	73.53%	542	511	-31	-5.72%

The summary below shows only year to date figures, and in the case of public realm and fire data, will generally be a month in arrears.

Type	YTD 12/13	YTD 13/14	Volume +/-	% Change
Domestic Violence Crimes	109	120	11	10%
Night Time Economy Violence	5	8	3	60%
Hate Crime	13	18	5	38%
Deliberate Fires	44	26	-18	-41%
Cleanliness	83	83	0	0%
Graffiti	68	106	38	56%
Fly-Tipping	124	219	95	77%

Priorities & Targets

The North Locality has targets to reduce Criminal Damage, Shop Theft and Violence. Performance against Targets is set out below for the Locality.

Locality Target Summary																
Locality	Crime Type	Apr-13	May-13	Jun-13	Jul-13	Aug-13	Sep-13	Oct-13	Nov-13	Dec-13	Jan-14	Feb-14	Mar-14	YTD	Proposed year end Position	+/- Target Position
North	Criminal Damage	146	141	127	132	167	134	134	126	125	130	130	130	1232	1623	-1
	Shop Theft	61	63	65	45	66	59	48	49	60	45	45	45	516	615	36
	Violence	163	165	197	188	171	148	141	146	153	140	140	140	1472	1864	28

Exception Reporting

Criminal Damage

Criminal Damage has decreased by 10% (2 less offences) compared to December 2012/13 and there is no year to date change. The table below shows the wards criminal damage reports on a monthly basis for the year to date, and compares them with the previous year to date.

Criminal Damage														
	Apr	May	Jun	Jul	Aug	Sep	Oct	Nov	Dec	Jan	Feb	Mar	Year Total	YTD
2011-12	29	31	22	23	26	21	21	27	16	21	23	19	279	216
2012-13	20	13	17	15	20	20	13	22	20	13	23	24	220	160
2013-14	19	21	11	14	29	20	18	10	18					160
Volume +/-	-1	8	-6	-1	9	0	5	-12	-2					0
% Change on last year	-5%	62%	-35%	-7%	45%	0%	38%	-55%	-10%					0.0%

Shop Theft

Shop Theft offences increased by 67% (2 more offences) compared to December 2012/13. The large increases in shop theft during the summer months means the year to date total has increased by 88.5% (23 more offences). The table below shows the wards shop theft reports on a monthly basis for the year to date, and compares them with the previous year to date.

Shop Theft														
	Apr	May	Jun	Jul	Aug	Sep	Oct	Nov	Dec	Jan	Feb	Mar	Year Total	YTD
2011-12	1	2	4	3	3	6	2	4	1	1		2	29	26
2012-13	2	7	5	1	2	2	1	3	3	10	2	3	41	26
2013-14	2	9	3	3	11	10	2	4	5					49
Volume +/-	0	2	-2	2	9	8	1	1	2					23
% Change on last year	0%	29%	-40%	200%	450%	400%	100%	33%	67%					88.5%

Violence

Violence increased by 60% (9 more offences) this month compared to December 2012/13. The year to date increase was 11.9% (23 more offences). The table below shows the wards violence reports on a monthly basis for the year to date, and compares them with the previous year to date.

Violence														
	Apr	May	Jun	Jul	Aug	Sep	Oct	Nov	Dec	Jan	Feb	Mar	Year Total	YTD
2011-12	22	22	23	23	24	29	18	17	18	17	15	24	252	196
2012-13	20	19	24	20	26	28	20	22	15	21	18	21	254	194
2013-14	26	17	25	23	29	20	26	27	24					217
Volume +/-	6	-2	1	3	3	-8	6	5	9					23
% Change on last year	30%	-11%	4%	15%	12%	-29%	30%	23%	60%					11.9%

All Crime

Basford's all crime statistics increased by 2.13% (2 more offences) compared to December 2011/13. The Year to Date figure shows a 3.22% increase (29 more offences). A full breakdown of the crime rates for each ward can be found on page 6.

All Crime														
	Apr	May	Jun	Jul	Aug	Sep	Oct	Nov	Dec	Jan	Feb	Mar	Year Total	YTD
2011-12	119	127	141	138	125	114	93	113	99	95	104	121	1389	1069
2012-13	88	105	103	79	103	111	95	124	94	101	93	106	1202	902
2013-14	98	100	89	89	141	116	109	93	96					931
Volume +/-	10	-5	-14	10	38	5	14	-31	2					29
% Change on last year	11%	-5%	-14%	13%	37%	5%	15%	-25%	2%					3%

Crime Figures

Crime Types by Rate (per 1000 of population) of the 20 Wards – Figures are Year to Date 2013/14

WARD	ALL CRIME	AUTOCRIME	BURGLARY	DAMAGE	PERSONAL ROBBERY	THEFT	VIOLENCE
ARBORETUM	99.06	5.74	9.60	12.56	5.47	15.52	24.85
ASPLEY	67.76	5.96	5.45	11.80	0.91	10.55	17.25
BASFORD	57.44	7.10	5.43	9.87	1.23	10.43	13.39
BERRIDGE	62.46	7.24	5.84	9.17	1.07	14.21	12.49
BESTWOOD	48.23	3.46	5.19	9.91	1.07	6.21	11.58
BILBOROUGH	56.87	6.73	5.36	10.24	0.95	8.99	12.68
BRIDGE	64.90	3.59	1.64	8.31	1.23	26.04	11.69
BULWELL	88.38	5.69	5.08	18.51	1.92	21.97	17.21
BULWELL FOREST	53.84	3.53	4.04	10.06	1.47	14.25	10.65
CLIFTON NORTH	41.43	3.03	4.11	8.69	1.16	5.66	8.46
CLIFTON SOUTH	41.44	2.51	5.31	7.10	0.86	7.31	10.76
DALES	53.28	4.56	2.73	10.08	0.49	11.36	11.54
DUNKIRK AND LENTON	67.95	10.26	6.68	6.41	0.73	21.43	9.43
LEEN VALLEY	54.48	4.58	5.61	8.78	1.68	11.12	10.00
MAPPERLEY	56.42	7.64	4.48	7.83	0.57	10.73	10.67
RADFORD AND PARK	58.59	8.17	6.43	5.41	1.89	16.69	8.93
SHERWOOD	62.09	5.64	5.97	6.49	1.82	21.41	11.16
ST ANNS	66.80	4.65	3.79	12.10	3.79	7.30	18.61
WOLLATON EAST AND LENTON ABBEY	35.57	3.11	5.73	3.62	0.30	12.86	3.52
WOLLATON WEST	29.03	4.75	4.14	3.39	0.27	7.67	2.85
WARD AVERAGE	58.30	5.40	5.13	9.02	1.44	13.09	11.89

All ASB Figures

All ASB by Rate (per 1000 of population) of the 20 Wards)

WARD	RATE (PER 1000 OF POP.) Dec 2013
ARBORETUM	6.82
ASPLEY	3.40
BASFORD	3.64
BERRIDGE	2.36
BESTWOOD	3.64
BILBOROUGH	3.22
BRIDGE	3.08
BULWELL	3.65
BULWELL FOREST	2.79
CLIFTON NORTH	2.25
CLIFTON SOUTH	2.01
DALES	3.95
DUNKIRK & LENTON	1.47
LEEN VALLEY	3.92
MAPPERLEY	2.02
RADFORD & PARK	2.14
SHERWOOD	1.62
ST ANNS	5.23
WOLLATON EAST & LENTON ABBEY	0.80
WOLLATON WEST	0.47
WARD AVERAGE	2.92

	Highest Rate
	Second Highest Rate
	Third Highest Rate

Fire

Table: Volume of Deliberate Primary and Secondary Fires by Ward

Fire Data									
Locality	Ward	Nov-12	Nov-13	Volume +/-	% Change	Ytd 12-13	Ytd 13-14	Volume +/-	% Change
Central	Arboretum	2	0	-2	-100%	13	18	5	38%
	Berridge	7	3	-4	-57%	35	29	-6	-17%
	Dunkirk and Lenton	1	2	1	100%	5	7	2	40%
	Radford and Park	1	1	0	0%	24	14	-10	-42%
	Sherwood	0	3	3		9	15	6	67%
	Wollaton East and Lenton Abbey	0	0	0		6	6	0	0%
	Wollaton West	0	0	0		2	3	1	50%
Central Locality		11	9	-2	-18%	94	92	-2	-2%
North	Aspley	1	0	-1	-100%	45	34	-11	-24%
	Basford	4	2	-2	-50%	40	26	-14	-35%
	Bestwood	5	0	-5	-100%	31	37	6	19%
	Bilborough	3	2	-1	-33%	34	19	-15	-44%
	Bulwell	6	7	1	17%	60	56	-4	-7%
	Bulwell Forest	0	1	1		28	12	-16	-57%
	Leen Valley	3	2	-1	-33%	20	20	0	0%
North Locality		22	14	-8	-36%	258	204	-54	-21%
South	Bridge	0	2	2		10	14	4	40%
	Clifton North	1	2	1	100%	10	9	-1	-10%
	Clifton South	2	1	-1	-50%	17	25	8	47%
	Dales	1	1	0	0%	6	13	7	117%
	Mapperley	2	0	-2	-100%	14	10	-4	-29%
	St. Anns	2	1	-1	-50%	22	23	1	5%
South Locality		8	7	-1	-13%	79	94	15	19%
Division		41	30	-11	-27%	431	390	-41	-10%

Note: Where ward boundaries overlap with the City Centre fires that occurred in the City Centre have been **included** in the ward figures.

Community Protection

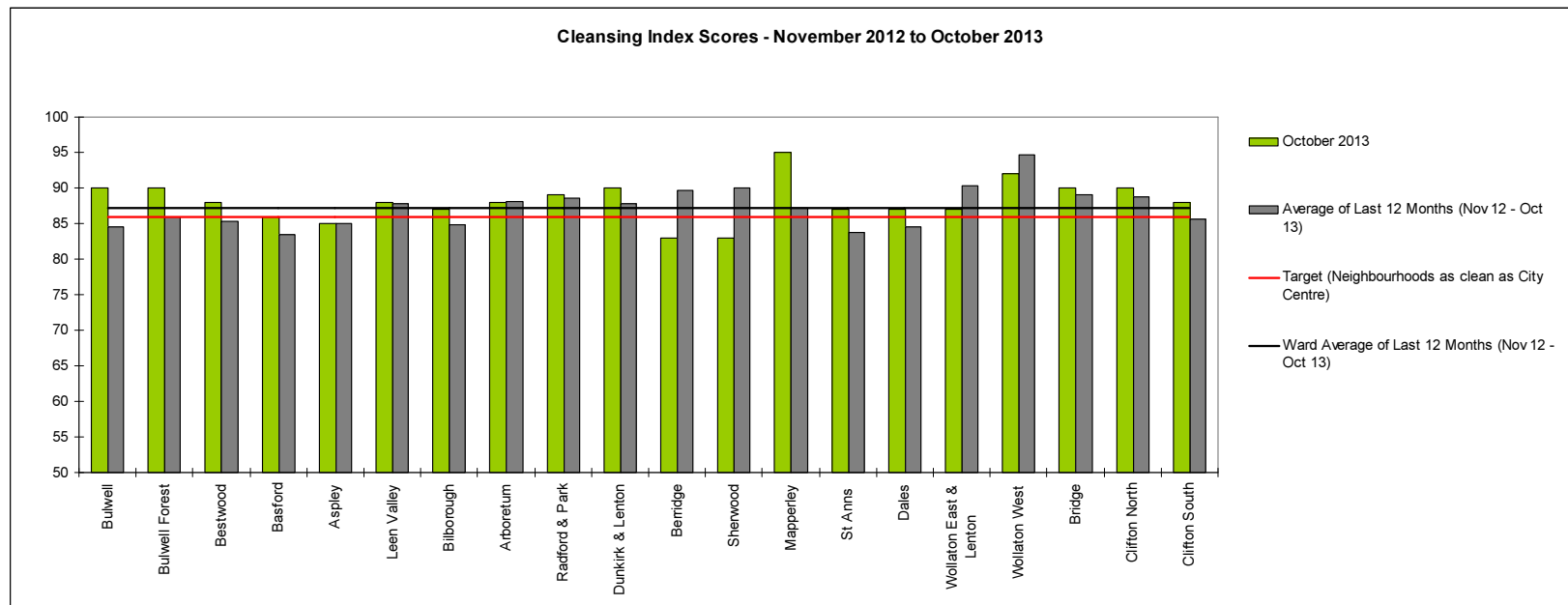
Data has been received from Community Protection and where postcodes have been listed these have been geo-coded and mapped to determine the Ward. All addresses relate to the address of the Perpetrator.

In December 2013 the no orders were issued.

For enquiries regarding Community Protection court outcomes please contact the Operational Manager for the locality.

Cleanliness Index

This graph shows the position of your ward compared to other Wards



The “neighbourhood as clean as the city centre” benchmark target on cleanliness is to achieve a score of 86% in every ward. The 86% target is shown in red in the above graph.

To calculate the Cleanliness Index (CI) an agreed number of transects are surveyed across an area covering a range of land types. Each site surveyed is awarded a cleanliness grade based on a 7 point scale from A to D where Grade A: – no litter, and Grade D: - heavily littered. The maximum possible score of 100 is achieved when all sites achieve Grade A.

The Code of Practice for Litter and Refuse (COPLAR) requires councils to strive to reach an ‘acceptable’ standard of cleanliness (grade B or better) across the Council area. Grade A is the ultimate goal and is how a site should be immediately after sweeping but is almost impossible to maintain for any length of time. For example, a grade A site is completely free of litter – one cigarette butt takes it down to B+.

To achieve the manifesto commitment of Neighbourhoods as clean as the City Centre a target of 86 is required as that was the CI for the City Centre in May 2011. To give some context if all areas surveyed achieved a grade ‘B’ standard, this would equate to a cleanliness index of 67.

Cleanliness Figures provided by Neil Flaherty – Neighbourhood Services Directorate

Cleanliness Index

Cleanliness Index
Score

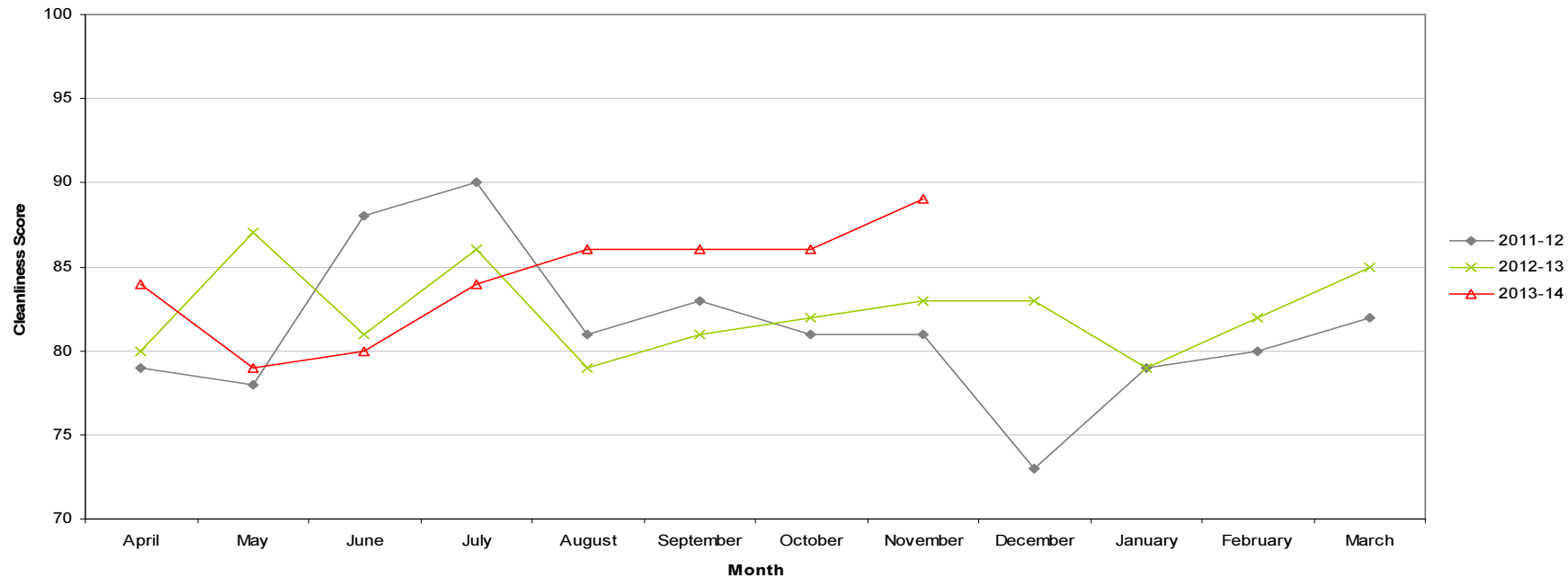
89

Performance compared to
previous year

Performance compared to
neighbourhoods target
of 86

- All data refers to a comparison with the previous year's month
- It is proposed that performance over time graphs be used for each indicator
- Historic data for comparison is not available for dog fouling

Cleanliness Index - Basford

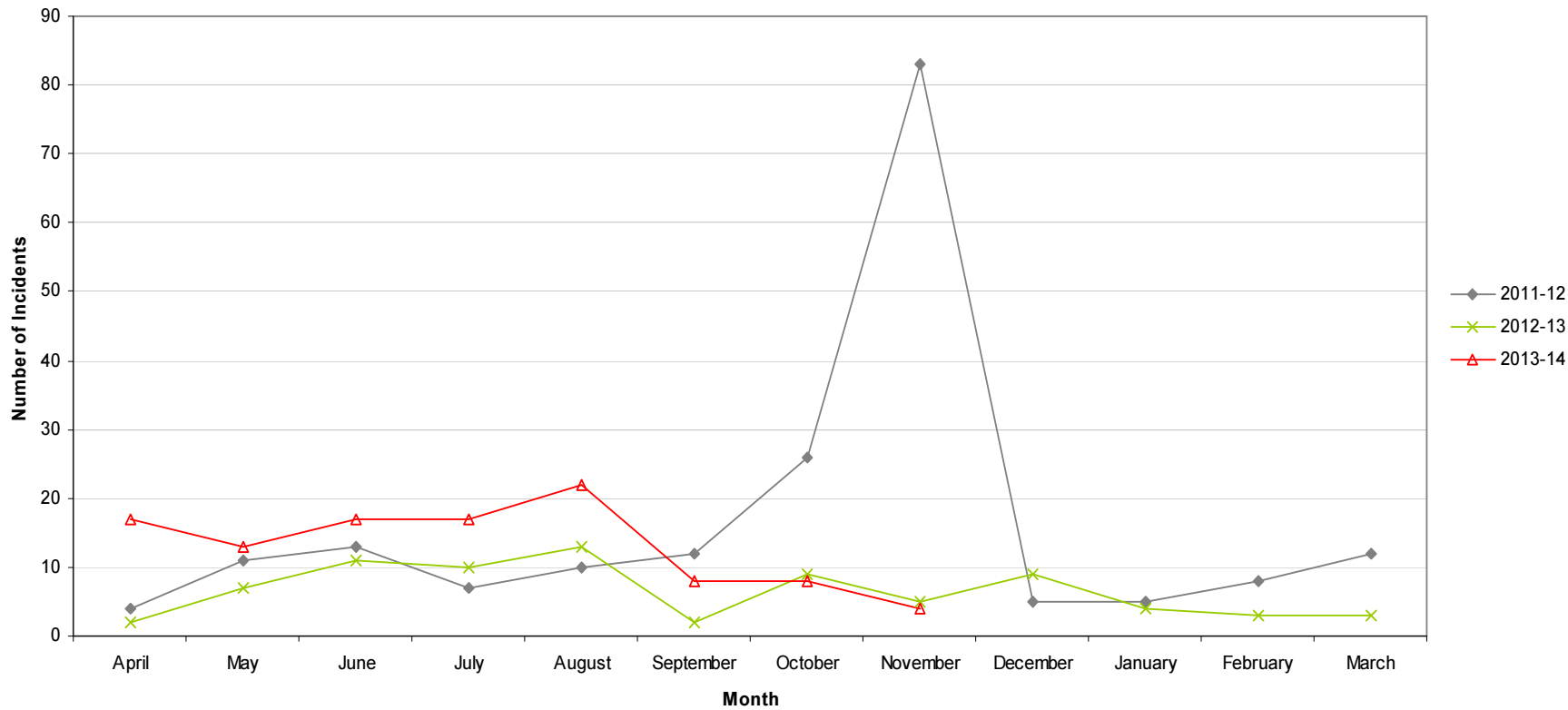


Graffiti Reports

- All data refers to a comparison with the previous year's month
- It is proposed that performance over time graphs be used for each indicator
- Historic data for comparison is not available for dog fouling

RED		
AMBER		
GREEN	4 incidents	Decrease of 1

Incidents of Graffiti - Basford

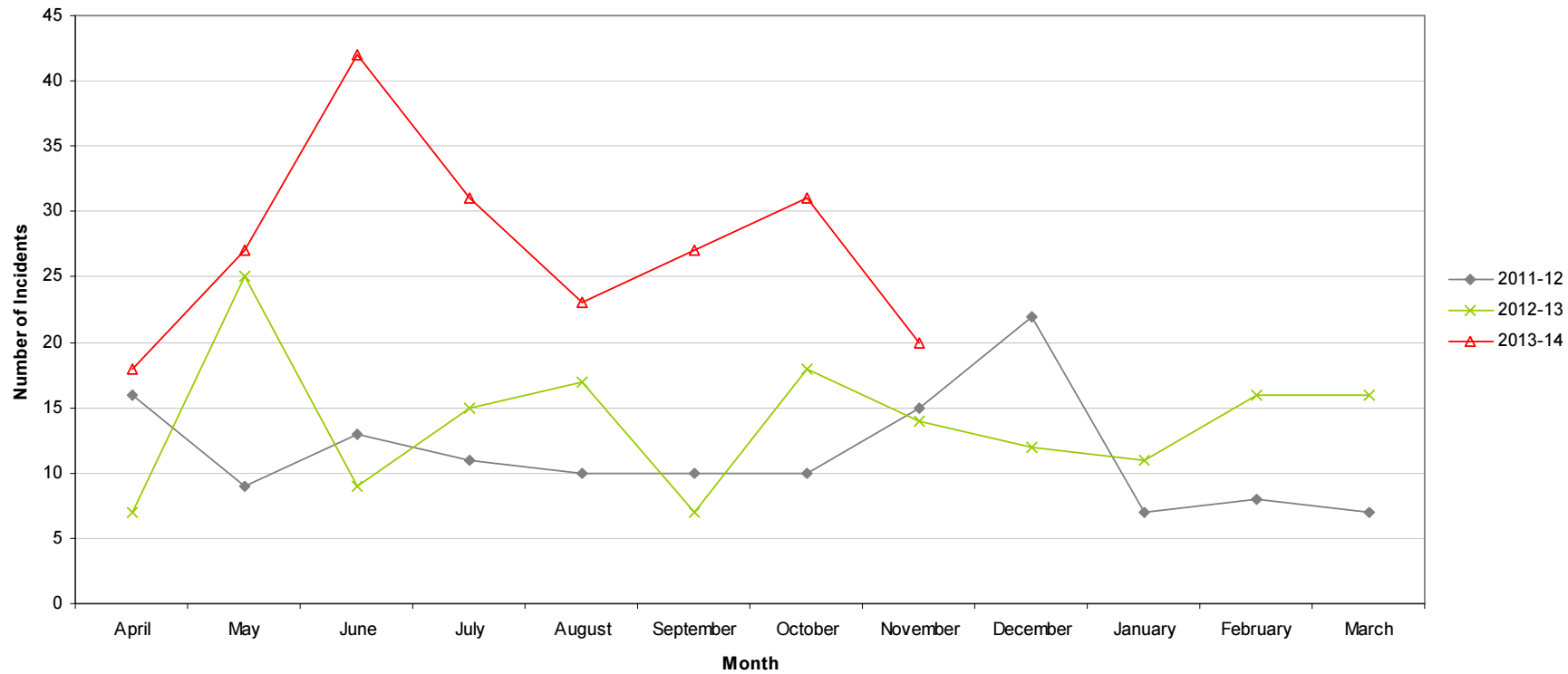


Fly Tipping

RED	20 incidents	Increase of 6
AMBER		
GREEN		

- All data refers to a comparison with the previous year's month
- It is proposed that performance over time graphs be used for each indicator
- Historic data for comparison is not available for dog fouling

Incidents of Fly Tipping - Basford



Housing

Ward Report - Basford

Generated on: 18 December 2013









BASW1 Anti-social behaviour



Performance indicator and definition	Target	2013/14			2012/13	2011/12
		Value	Status	Long Trend	Value	Value
% of ASB cases resolved – Bestwood <i>Note: This PI measures the proportion of ASB cases NCH has successfully resolved. Data for this PI is not available by ward and is reported by Housing Office.</i>	97.8%	99%			98.08%	97.09%
% of ASB cases resolved by first intervention – Bestwood <i>Note: This PI monitors how many ASB cases NCH resolved on the first intervention e.g. written warning. Data for this indicator is not available by ward and is reported by Housing Office.</i>	76%	86.87%			79.56%	
Number of new ASB cases – Bestwood <i>Note: Data for this PI is only available by Housing Office.</i>		81			138	240
Tenant satisfaction with the ASB service - Bestwood <i>Note: Data for this PI is only available by Housing Office.</i>	8	6.7			7.1	6.49

Housing

BASW4 Empty properties

Performance indicator and definition	Target	2013/14			2012/13	2011/12
		Value	Status	Long Trend	Value	Value
Average void re-let time (calendar days) – Basford Ward <i>Note: This PI measures how long it takes NCH to re-let empty properties from the end of the old tenancy to the start of the new tenancy</i>	25	26.38			70.61	35.9
Number of empty properties awaiting decommission – Basford Ward <i>Note: This PI shows the number of empty properties which will not be re-let and includes those being decommissioned and / or demolished.</i>		2			3	6
Number of lettable voids – Basford Ward <i>Note: Lettable voids are empty properties available for re-letting. They will receive repair work and then be re-let to a new tenant.</i>		11			11	24

BASW5 Tenancy sustainment

Performance indicator and definition	Target	2013/14			2012/13	2011/12
		Value	Status	Long Trend	Value	Value
Percentage of new tenancies sustained - Basford Ward <i>Note: This PI measures the number of new tenants who are still in their tenancy 12 months later.</i>	93.5%	96.39%			97.2%	

Housing

Key:



Performance on or exceeding target



Performance below target



Data only performance indicator



Performance has improved compared to two years ago



Performance has deteriorated compared to two years ago



Performance unchanged

Data prepared by Nottingham City Homes Performance Team

For more information please contact Jonathan Hurst, Performance Data Officer on 0115 9157368 or Marcus Parton, Performance Analyst on 0115 915715

Methodology

Data has not been audited or verified and therefore must only be used as a reflection of crime.

Crime data and ASB calls have been extracted from the Police systems and mapped to ascertain which Ward they occurred in.

Where a ward boundary overlaps with the City Centre, crime data and ASB calls relating to the City Centre have been removed.

Where possible the most recent data is used, although for some areas this may be a month further in arrears.

Discussions continue with other agencies regarding what further data can be included.

Bestwood Ward Priorities

(Last reviewed January 2014)

Theme	Priorities	Key Actions	Outcome (Methods of evaluation)	Lead
Safer	<p>§ To reduce anti-social behaviour in the neighbourhood priority area. NAT to focus upon emerging hotspots, diversionary activities and nuisance neighbours.</p>	<p>Neighbourhood Priority: Top Valley – Kyle View and surrounding area.</p> <p>Priority response area – joint high visibility patrols by Neighbourhood Policing Team.</p> <p>CP to pursue action against individuals causing ASB using powers available (5 step ASB procedure).</p> <p>Police programme for year 7's at Big Wood School – delivery in March.</p> <p>Jan 2013 - Family Community Team providing 6 day provision. Partners to publicise activity (schools, police etc).</p> <p>City Services to monitor debris data e.g. accumulation of alcohol containers in parks & feed into NAT.</p>	<p>Target reduction of 8%</p> <p>Increase in numbers of young people participating in positive activities.</p>	<p>Police & Community Protection</p> <p>Big Wood & Police</p> <p>Family Community Teams</p> <p>City Services</p>
	<p>§ Reduction in accidental dwelling fires across the area.</p>	<p>Undertaking home safety checks based on risk</p> <p>Delivering Vulnerable Persons training to our partners enabling them to be our eyes and ears</p> <p>Commissioning partners to undertake work on behalf of Nottinghamshire Fire and Rescue Service</p> <p>Using Social Media to effectively give our safety messages and encouraging our partners to pass on these messages</p>	<p>Reduction in the number of dwelling fires (baseline TBC).</p>	<p>Fire Service</p> <p>Fire Service</p>

	<p>• Reduction of fatalities and fire injuries. Where no fire deaths or injuries have occurred in a ward we aim to maintain this (zero fatalities is our aim)</p> <p>§ Action in deliberate Fire Setting</p> <p>§ To address domestic violence through prevention & support services</p> <p>§ To reduce all crime</p>	<p>on their social media (sharing / retweeting)</p> <p>As above</p> <p>Working with our partners to attend events likely to be attended by our vulnerable persons profile</p> <p>Offering and delivering our risk watch package in all primary schools across the ward. Ensuring that our fire setters scheme is utilised and that our partners are aware of how to refer to NFRS Work with Nottinghamshire Police to ensure that information is shared appropriately about deliberate fire setting and to share data about hot spot areas and themes.</p> <p>Delivery of PHSE sessions by fire service to Big Wood pupils – rolling years – deliberate, hoax, driving, fire safety.</p> <p>NAT to ensure that frontline staff has appropriate training to refer onto support services.</p> <p>Support package provided via Family Community Teams.</p> <p>Stronger Families delivered at the Ridge & William Olds and ‘Strengthening Families’ through Primary and Big Wood schools (September – new intake).</p> <p>Family Community Teams to raise awareness of Claire’s Law</p>	<p>Reduction in the number of secondary fires (baseline TBC).</p> <p>To increase knowledge of support available.</p>	<p>All</p> <p>Family Community Teams</p> <p>Family Community Teams / Schools</p>
--	---	---	--	--

		<p>Challenges in new financial year to maintain low levels of crime due to pressures such as budgets and welfare reform.</p> <p>Intelligence-led approach to be used to monitor and respond appropriately if levels rise. Measures could include prevention through education, high visibility surveillance or target hardening.</p> <p>Love You Love Bestwood Campaign – to raise aspirations</p>	Target of 10% reduction in 2013/14	<p>Police & Community Protection</p> <p>All</p>
Neighbourhoods	<p>§ To improve the visual appearance of neighbourhoods by tackling hotspot areas e.g. untidy gardens and hedges.</p> <p>§ Review & resolve derelict buildings, land</p>	<p>Area 2 Transformation – plan of action to address environmental issues to be developed for problematic sites (August 2013).</p> <p>Undertake regular ward walks to identify neighbourhood issues.</p> <p>Big Wood Day of Action – 27th March 2014</p> <p>Primary Schools Day of Action – 10th June 2014</p> <p>NCH looking at the longer-term arrangements for managing garage sites & smaller pieces of land.</p> <p>A number of sites dependent upon economic climate and housing development</p>	<p>Level of public satisfaction in neighbourhoods.</p> <p>NCH estate star ratings</p> <p>Levels of cleanliness / fly tipping</p> <p>No. of lettable voids.</p>	<p>All</p> <p>CP</p> <p>All</p> <p>All</p> <p>All</p> <p>All</p> <p>NCH</p> <p>Property Services</p>
Families	§ More activities for young people	<p>Development of Advisory Board into networking meeting for all providers of 0-19years. This will incorporate the work of the community and voluntary sector.</p> <p>Undertake mapping of Area 2 provision to identify specific gaps in provision e.g. disabilities / girls.</p> <p>Family Community Teams will develop a local Youth Forum</p>		<p>Family Community Team (FCT)</p> <p>FCT</p> <p>FCT &</p>

	<p>§ Increase awareness of welfare reform and support services</p>	<p>to create opportunities for young people to be consulted and develop their Community (Autumn).</p> <p>Development of partnership projects.</p> <p>Ongoing intergenerational work with Big Wood school at Crossfield Court.</p> <p>Cycle Centre at William Olds Youth Centre – launched 1st June 2013. Looking to develop further projects.</p> <p>To develop mechanisms to involve school councils and Parent’s Forum in gathering their views to inform local priorities and provision</p> <p>The NAT have observed an increasing no. of families requiring urgent support (no food/money). To look at how the NAT can assist local residents in these difficult times.</p> <p>Family Community Team provides support packages to families experiencing financial crisis.</p> <p>Promote local support services.</p>	<p>Referrals to Food Bank Referrals to Bestwood Directions Referrals to Bestwood Advice Centre</p>	<p>Right Track</p> <p>FCT & Right Track & CVS</p> <p>Schools</p> <p>TravelRight & FCT & NDO</p> <p>Schools & FCT</p> <p>All</p> <p>FCT</p> <p>All</p>
Health	<p>§ To reduce childhood obesity</p>	<p>To address barriers in accessing physical activity and promotion of healthy eating. Health, Family Teams, Leisure and CVS to work together to address gaps/barriers.</p> <p>Travel Right currently looking at sustainable travel and access to provision in North Locality.</p> <p>Family Teams will deliver physical activities, and Healthy eating throughout universal provision to extend the Healthy</p>	<p>Levels of childhood obesity</p>	<p>DOBH / Leisure</p> <p>TravelRight</p> <p>Family Community</p>

	<p>§ To support local volunteers & raise aspirations</p>	<p>Children's Centre Standards 0-19.</p> <p>Cycle centre for Bestwood launched – 1st June 2013</p> <p>Family Community Team will deliver a physical session to include Tiny Cooks in line with the Healthy Weights agenda at Leen Valley Community Centre.</p> <p>NAT to map local volunteering opportunities and support local volunteers in finding appropriate placements. NAT will continue to support the recruitment of active members. Such vacancies could include:</p> <p>§ Change Makers</p> <p>§ Area 2 volunteers - Family Community Teams</p> <p>§ Bestwood Ward Community Centres – NDO to support the work of Community Centre Associations across the ward and support them to deliver activities that meet local need.</p> <p>§ Bestwood Community Matters – Forum of community / voluntary groups and volunteers. NAT to support linking up of volunteers and groups.</p> <p>§ Tenant & Residents Associations NCH to support current groups (Leen Valley) and support the formation of new. NCH, Neighbourhood Policing Team and Locality Management to attend meetings to support.</p>	<p>Levels of satisfactions in neighbourhoods.</p> <p>No. of volunteers.</p>	<p>Team</p> <p>TravelRight & FCT</p> <p>FCT</p> <p>Bestwood Partnership & CVS</p> <p>DOBH</p> <p>FCT</p> <p>NDO</p> <p>Community Minister, NDO</p> <p>NCH</p>
Working	<p>§ To raise awareness of job opportunities and provide support to</p>	<p>NAT to promote citywide initiatives which include:</p> <ol style="list-style-type: none"> 1) Nottingham Jobs Fund 2) Employer Hub 3) Apprenticeship Hub 	<p>To contribute to citywide targets</p> <p>Reduction in</p>	<p>Economic Development</p>

	<p>get people into employment.</p>	<p>4) Local Community Jobs fairs</p> <p>Bestwood Directions provide training and job opportunities through Work Clubs run in conjunction with colleges. Bestwood Directions focussing upon families with need to get back into work.</p> <p>To support local career days at schools</p> <p>To support new Food Park opportunities.</p> <p>NCH, Families Community Team to provide work shadowing / work experience opportunities for Big Wood pupils.</p> <p>RightTrack tack referrals for NEETs and facilitate apprenticeship opportunities – to link into Big Wood and Top Valley Comprehensives.</p>	<p>unemployment.</p>	<p>Bestwood Directions Schools, Economic Development, NCH Schools, Economic Development</p> <p>Schools, NCH & Family Community Teams</p> <p>Right Track School</p>
--	---	---	----------------------	--

Bestwood Community Engagement

Ward Walks

Area/ Estate	Date/ Time	Meeting Point
Bestwood Park – Winterton Rise, Blyton Walk, Chiltern Way	14 th October 2013	NCH Housing Office
Bestwood Estate – Andover Road	25 th November 2013	Leen Valley Community Centre

Events Delivered

Event	Lead Partners	Date / Time	Venue
Leen Valley Halloween Party	Leen Valley Community Association	October 2013	Leen Valley Community Centre
Leen Valley Christmas Party	Leen Valley Community Association	December 2013	Leen Valley Community Centre
Bestwood Park We'll Meet Again 1940's event	Bestwood Park Community Association	December 2013	Bestwood Estate Community Centre
Bestwood Christmas Lights & Recycling Drop Off	NCC, Bestwood Park Church and local schools	December 2013	Ward wide

Community Meetings

Group	Date	Venue
Bestwood Community Matters	15 th October 2013	Southglade Access Centre
Bestwood Estate Community Association	21 st Oct, 16 Dec, 20 th Jan 2014, 24 th February 2014 – all at 10am	Bestwood Estate Community Centre
Bestwood Park Community Association	11 th November 2013	Bestwood Park Community Centre
Leen Valley Community Association	22 nd Oct, 26 th Nov, 17 th Dec, 28 th Jan 14 – all at 6pm	Leen Valley Community Centre
Leen Valley TRA	16 th Oct, 20 th Nov – all at 6pm	Leen Valley Community Centre

Future Events and Activities Planned

Event	Lead Partners	Date/ Time	Venue
Bestwood's Got Talent	Schools, Community Minister, Right Track and NCC	07/01/14 5-6.30pm (Audition) 14/01/14 5-6.30pm (Audition) 21/01/14 5-6.30pm (Audition) 22/03/14 2-4pm (Final)	Bestwood Park Community Centre Leen Valley Community Centre Bestwood Estate Community Centre Big Wood School
Raymede Drive Improvement Scheme - consultation	Councillors, NCC and NCH	20 th January 2014 at 10am	Southglade Access Centre
Budget Consultation	NCC and Councillors	07/02/14 4.30-6pm (Messy Church) 6pm-7pm Open drop-in	Bestwood Park Church
Ward Walk	NCC, Councillors & partners	Top Valley - 26 th February 2014 at 10am	Top Valley Social Club
Big Wood Day of Action – 6 x ward walks across ward	NCC, Councillors & partners	27 th March 2014 – all day	n/a

Bestwood Finance

Bestwood Ward Councillor Budgets

Total Amount allocated this period £1,775

Budget Remaining Unallocated £25,677 (2013/2014)

Bestwood Area Capital Fund

Total Amount allocated this period £0

Budget Remaining Unallocated £81,462 (2013-2015)

Others – Section 106

None this period

Bestwood NCH Environmentals

Total Amount allocated this period £0

Budget Remaining Unallocated £0 (2013/2014)

Other Funding

None this period

Basford Ward Priorities

(Last reviewed December 2013)

Theme	Priorities	Key Actions	Outcome (Methods of evaluation)	Lead
Safer	§ To reduce anti-social behaviour in the neighbourhood priority area.	<p>Increased high visibility patrols in the priority area with reassurance engagement with citizens in the area.</p> <p>Increase take up of ALERT.</p> <p>To set up diversionary football sessions at Southwark School through spring and summer.</p> <p>Engage with young people from priority area in a programme of physical activity at Highbury Gym and address substance misuse and healthy eating.</p>	<p>Reduced complaints and calls from the priority area till priority resolved.</p> <p>Target to have 20% of Basford households by March 2014.</p> <p>Young people in the area attracted to diversionary activities</p>	<p>Police & Community Protection</p> <p>Police & Community Protection</p> <p>NM</p> <p>Family Community Team</p>
Neighbourhoods	<p>§ To improve the visual appearance of neighbourhoods by tackling hotspot areas</p> <p>§ Reduce empty vacant spaces</p>	<p>Area 2 Transformation – plan of action to address environmental issues to be developed for problematic sites (August 2013).</p> <p>Undertake regular ward walks to identify neighbourhood issues.</p> <p>Educational project at local schools to produce reports on the issue. Students to raise awareness in the community and to become responsible citizens.</p> <p>There are a number of small plots of land that attract fly-tipping and graffiti. These areas can be a drain on resources during clean up operations. Bring these areas into</p>	<p>Level of public satisfaction in neighbourhoods.</p> <p>NCH estate star ratings</p> <p>Levels of cleanliness / fly tipping.</p> <p>Identify a suitable site and bring partners together into a working party to explore</p>	<p>All</p> <p>CP</p> <p>All</p> <p>NM/City Services</p> <p>NM/NCH</p>

		use by investigating re-allocation of land to adjoining properties.	ways of bring site back into use.	
Families	§ Activities for young people	Provision of activities for young people on at least 4 nights a week in the Basford ward. Deliver weekly Youth and Play session at Basford Community Centre. Increase in numbers attending sessions.	Increase in numbers of young people participating in positive activities.	Family Community Team
	§ Develop a local youth Forum	To empower young people in the area and encourage young people to take ownership of their community. Encourage volunteering from young people particularly at Heathfield CC.	Monitor numbers young people attending forums and other ward based events.	FCT
	§ Work with local schools to build partnerships	Build on this work to challenge ASB, health issues and employment opportunities.	Events held in schools	FCT/NM
Health	§ Healthy Eating and reducing childhood obesity	Healthy lifestyles and healthy eating through cooking activities at Children's Centre.	Levels of childhood obesity	Family Community Team
		Ridewise to work on a number of projects in the ward to encourage healthier way of travelling such as walking and cycling. As part of this we will engage with Ellis Guilford School to encourage healthier options for travelling to school. Getting Active events to be planned in partnership with FCT, Decade of Better Health. This will involve healthy eating, physical activities and workshops.	Number of students taking up cycling.	Ridewise/ NM
Working	§ To raise awareness of job opportunities and provide support to get people into employment.	NAT to promote citywide initiatives which include: 1) Nottingham Jobs Fund 2) Employer Hub 3) Apprenticeship Hub 4) Local Community Jobs fairs To support local career days at schools	To contribute to citywide targets Reduction in unemployment.	Economic Development

Basford Community Engagement

Ward Walks

Area/ Estate	Date/ Time	Meeting Point
Highbury Road / Brooklyn Road	21 st November 2013	Junction of Kersall and Highbury
Hucknall Road / Brooklyn Road	16 th January 2014	Junction of Kersall and Brooklyn

Events Delivered

Event	Lead Partners	Date / Time	Venue
Budget Consultation Phase 1	Locality management	9 October	Southwark School
Leader Listens	Locality management	25 November	Basford Miners Welfare
SALTAR Xmas Playscheme	SALTAR	Dec 2013	Basford CC
Xmas tree planting	Parks	6 Dec 2013	Broad Walk

Community Meetings

Group	Date	Venue
Rosegay TRA	11 Nov 2013, 13 Jan 2014	Southwark School
Highbury Vale TRA	5 Nov, 3 Dec 2013, 7 Jan 2014	Our Ladies Church Hall
Basford CA	6 Nov, 2013	Basford CC
Heathfield CA	12 Nov, 17 Dec, 2013	Heathfield CC
SALTAR	20 Nov, 16 Dec 2013, 29 Jan 2014	The Mill

Future Events and Activities Planned

Event	Lead Partners	Date/ Time	Venue
Budget Consultation Phase 2	Locality Management	5 February 2014	Southwark School
Jobs Fair	Economic Development	Feb 2014	Highbury Vale CBF Gym
Community Clean up	Locality Management	Mar 2014	Twitchells around Ellis

Basford Finance

Ward Councillor Budgets	
Total Amount allocated this period	£650
Budget Remaining unallocated (inc. of 2013-14 allocation)	£19,475

Area Capital Fund	
Total Amount allocated this period	£35,250
Budget Remaining unallocated (inc. of 2013-14 allocation)	£162,104

Others – Section 106, NCH Environmentals	
None this period	£0