

COVID-19 Outbreak Control Engagement Board

01/11/2021

Lucy Hubber, Director of Public Health

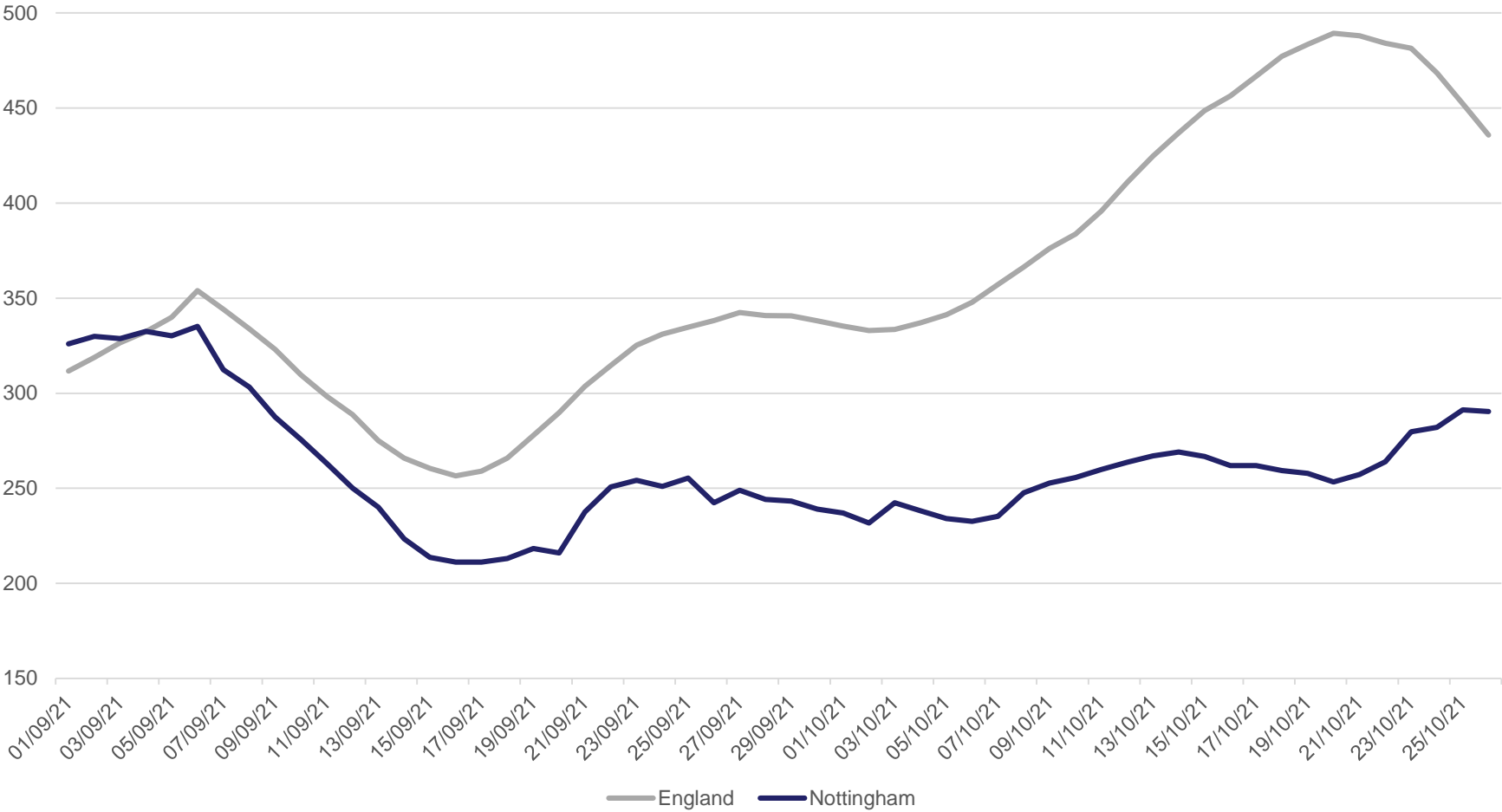


**Nottingham
City Council**

Summary of case rates

- Nottingham has had 979 cases in last week (test date 20.10-26.10), which is a 7-day incidence rate of **290.4 per 100,000 population**
- This is a 12% increase on the previous week and follows a period of very stable rates in Nottingham
- Rates remain lower than the England wide rate of **435.8 per 100,000** and are low compared to many other local authorities in the region and nationally;
- However, rates in Nottingham are now increasing whereas the national rate is currently decreasing
- Rates reflect general transmission within the community – there are no outbreaks that are being managed at present

Nottingham City - 7 day rolling incidence rate (per 100,000 population)



Age breakdown of cases

- From mid-September to mid-October case rates were highest (although relatively stable) amongst secondary school aged children
- Rates in this age group have significantly reduced during the half term period, although this may be partially as a result of less testing
- During the same period we have seen steady increases in the adult population, and more recently a sharper increase in cases amongst those aged 60 years and over
- Rates remain lowest amongst those aged 18-22 years

Age-specific case rates per 100,000 people

