



**Integrated  
Care System**  
Nottingham & Nottinghamshire

# NHS Update

## November 2021



[www.healthandcarenotts.co.uk](http://www.healthandcarenotts.co.uk)



[@NHSNottingham](https://twitter.com/NHSNottingham)



# Hospital Update

- We have seen 84 admissions in the seven days to 24 October, which compares to 80 in the previous 7-day period
- We had 169 beds occupied by Covid+ patients on 29 October, this compares to 143 beds on 19 October
- Of those 169 beds, 12% (21 beds) were mechanically ventilated and in the most critical condition
- In the week from 21-27 October there were 10 deaths, which compares to 16 the previous week
- \*\* These figures are for Nottingham University Hospitals, Sherwood Forest Hospitals, Nottinghamshire Healthcare NHS Trust and Bassetlaw Hospital





# Vaccination Update - Adults

Age group	First dose	Second dose
18-29	59.7%	49.9%
30+	87.7%	82.4%





# Vaccination Update – Young People

- 12 to 15 year olds –
  - Vaccinated in 15 Nottingham City Schools
  - Bookable slots at Forest Recreation
- 16 to 17 year olds –
  - Bus at Colleges
  - Walk In sites including QMC, Forest Rec and local pharmacies
  - Uptake beginning of October 41%



Integrated  
Care System  
Nottingham & Nottinghamshire

# Boosters

- Eligible

- people aged 50 and over
- people who live and work in care homes
- frontline health and social care workers
- people aged 16 and over with a health condition that puts them at high risk of getting seriously ill from COVID-19
- carers aged 16 and over
- people aged 16 and over who live with someone who is more likely to get infections (such as someone who has HIV, has had a transplant or is having certain treatments for cancer, lupus or rheumatoid arthritis)





Integrated  
Care System  
Nottingham & Nottinghamshire

# Boosters



- Access
  - Invitation from the NHS – local GP, pharmacy, vaccination centre
  - Book on-line or by calling 119
  - Walk-In – Forest Rec

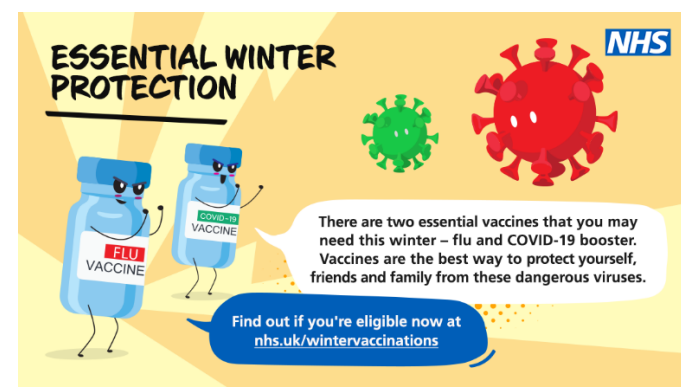




# Flu

## Flu Vaccination is important:

- more people are likely to get flu this winter as fewer people will have built up natural immunity to it during the COVID-19 pandemic
- if an individual gets flu and COVID-19 at the same time, research shows they are more likely to be seriously ill
- getting vaccinated against flu and COVID-19 will provide protection for the individual and those around them for both these serious illnesses

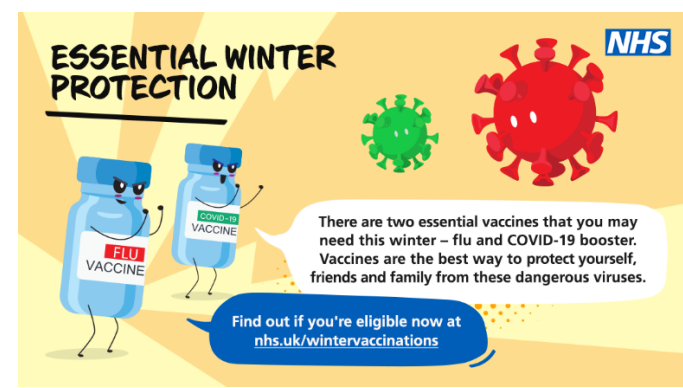




# Flu

## • Eligible

- are 50 and over (including those who'll be 50 by 31 March 2022)
- have certain health conditions
- are pregnant
- are in long-stay residential care
- receive a carer's allowance, or are the main carer for an older or disabled person who may be at risk if you get sick
- live with someone who is more likely to get infections (such as someone who has HIV, has had a transplant or is having certain treatments for cancer, lupus or rheumatoid arthritis)
- frontline health or social care workers







Integrated  
Care System  
Nottingham & Nottinghamshire

# Flu

- Access

- GP surgeries
- Local pharmacies
- Hospital appointments

