

Local Covid-19 testing strategy

Roz Howie, C-19 Programme Director and SRO for Testing – City and County

Engagement Board

28/09/2021



**Nottingham
City Council**

COVID-19 Testing in Nottingham City

Symptomatic
Testing (PCR)

Asymptomatic
Testing (Lateral
Flow)

Asymptomatic
Testing –
Vulnerable
settings

**Shared Nottingham City &
Nottinghamshire County Testing
function delivering:**

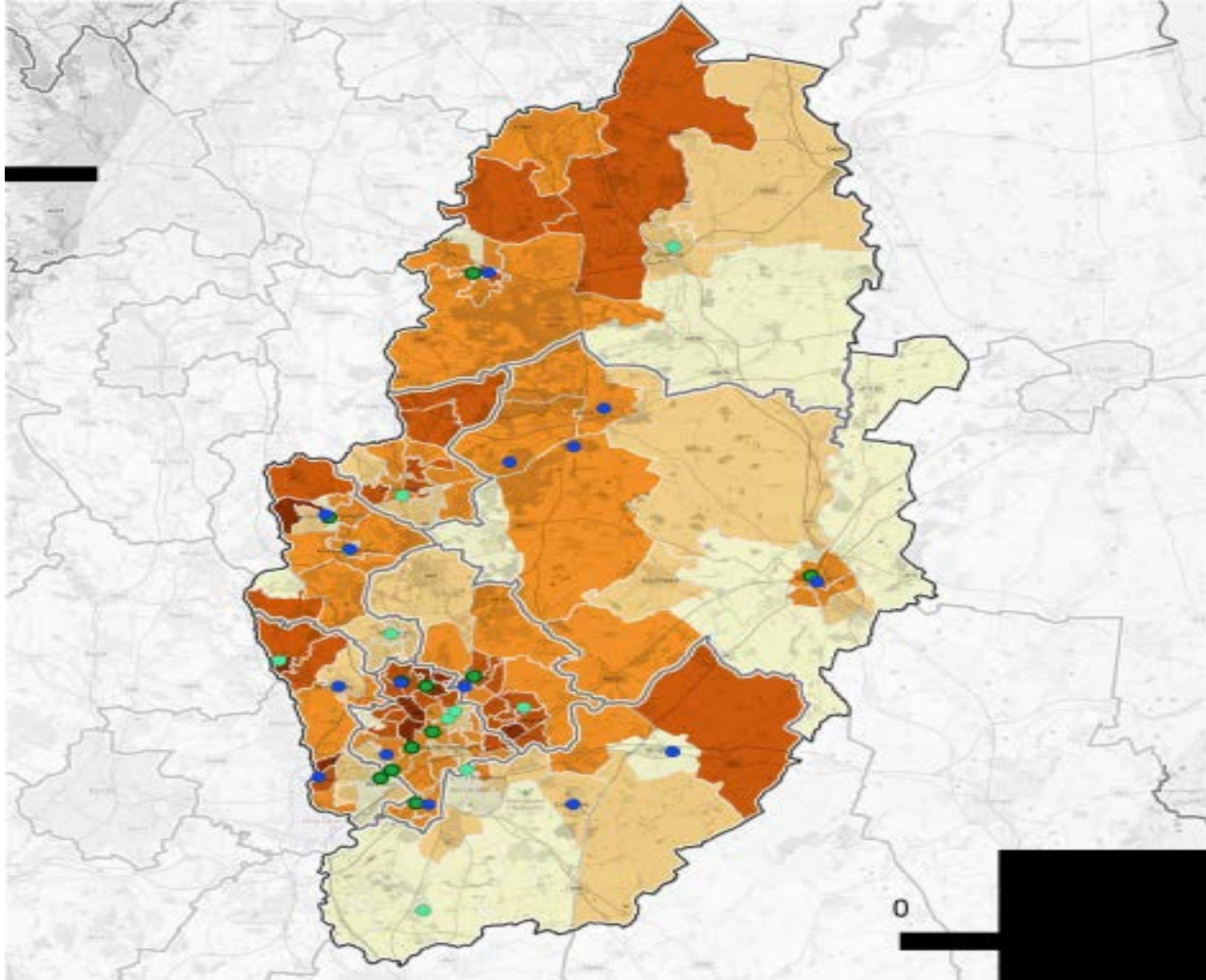
Outbreak
Testing

Community
Collect

Events Testing



1) Symptomatic/PCR Testing



1) Symptomatic/PCR Testing

Type	City/County	Name	Postcode
MTU	City	Winchester Street	NG5 2BD
MTU	City	Spondon Street	NG5 2FR
LTS	City	Forest Park & Ride	NG7 6AQ
LTS	City	University Park Car Park	NG7 2QL
LTS	City	Duke Street Car Park	NG6 8EZ
LTS	City	Jubilee Campus Car Park	NG8 1BB
LTS	City	Southglade Leisure Centre Car Park	NG5 5GU
LTS	City	NTU Clifton Campus Car Park	NG11 8NS
MTU	County	Lambley Lane Car Park	
MTU	County	Piggins Croft (Hucknall)	NG15 7BT
MTU	County	County Hall	
MTU	County	Churchgate Car Park (Retford)	DN22 6PE
MTU	County	Ellis St. Car Park (Kirkby)	NG17 7AL
MTU	County	The Sun Inn (Broxtove, Eastwood)	NG16 3NT
MTU	County	Newark Academy	NG24 3AL
MTU	County	East Leake Parish Council	LE12 6PF
MTU	County	Grove Street Car Park	NG16 8BU
LTS	County	Druids Inn Car Park, Arnold	NG5 7DS
LTS	County	Albion Street Car Park, Beeston	NG9 2PA
LTS	County	Sutton Market North Car Park, Brook Street	NG17 1AL
LTS	County	Castle House Car Park	NG24 1BY
LTS	County	Central Avenue Car Park, Worksop	S80 1EW




3) Asymptomatic Testing – Autumn/Winter Plan


- Nationally lateral flow devices identify around 1 in 4 of all cases reported daily
- Regular asymptomatic testing will continue to help find cases & break chains of transmission
- Focus will be on those;
 - Who are not fully vaccinated,
 - In education
 - In higher-risk settings e.g. NHS, social care, prisons
- Local authority led community testing will continue to focus on disproportionately-impacted and other high-risk groups
- Government will continue to provide the public with access to free lateral flow tests in the coming months, as an important tool to support people to manage their own risk and the risk to others
- However the government have stated that universal free provision will end

Secondary school and college students are given tests to use at home twice weekly throughout term time and the holidays.

Education

Early years and primary school children do not need to be tested. (Staff are provided with tests to use twice a week).



Community Collect:
You can collect tests to use at home from 28 sites near where you live.



Events Testing –
Arena and Detonate

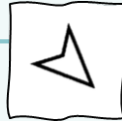

Community Testing:
You can visit community sites or a mobile unit to take a supervised test. Drop in, no booking required. Hyson Green, Trinity Sq, Bulwell Market, **Smithy Row & Winter Wonderland**

Private sector and charities registered with the national programme can order tests to either use in the workplace or for staff to collect and use at home.

Workplace


Pharmacy Collect:
You can collect tests to use at home from participating local pharmacies.
Changed 4th October QR code now required


Supported testing in 22 (1) vulnerable settings

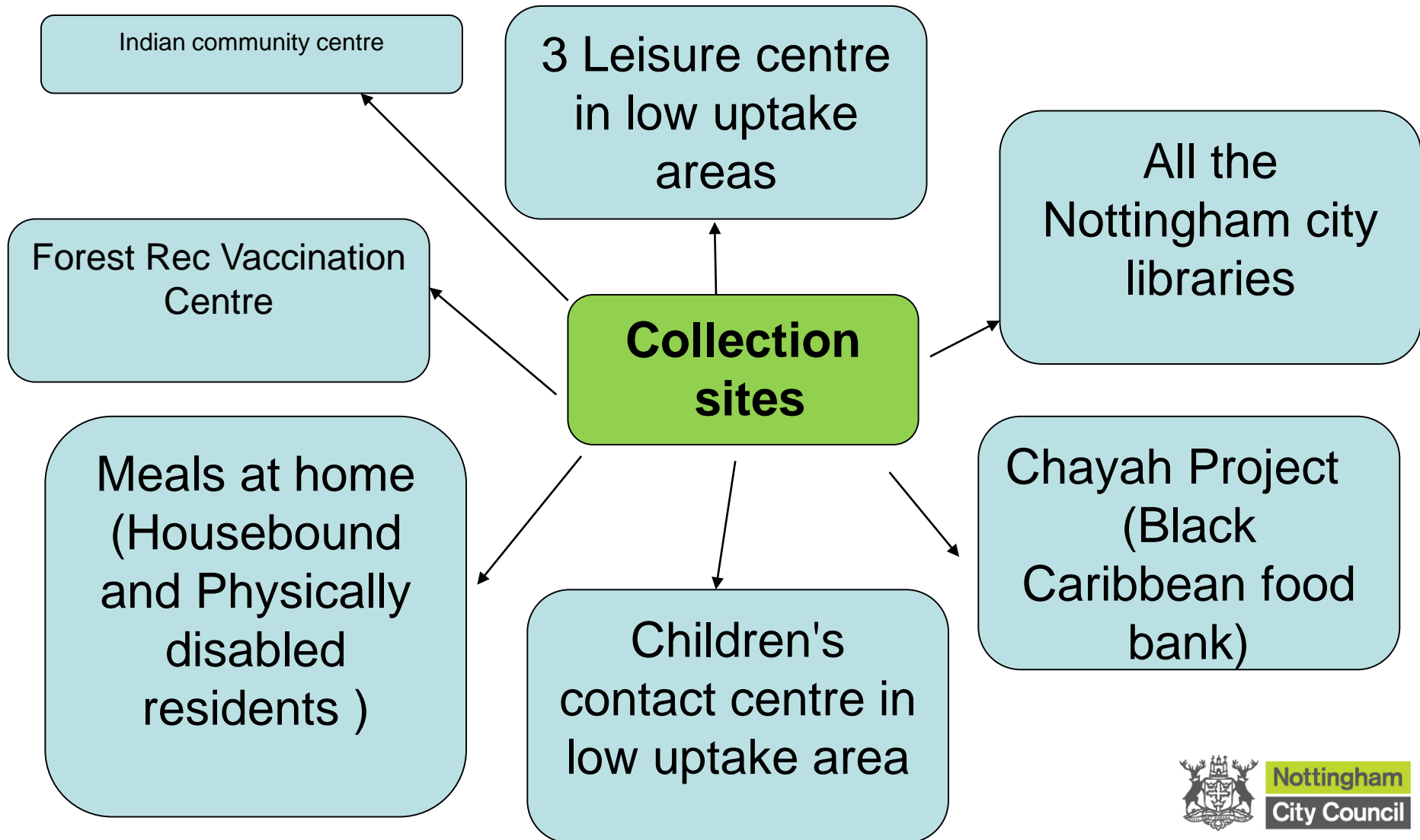

Test Direct:
If you can't otherwise access tests, you can order tests online or through 119, which will be delivered to your home.

Public Sector and other employers can ask County Council to support set up of supervised testing in the workplace or can direct staff to access tests through alternative available channels.

Lateral Flow Device Testing Channels



3) Disproportionately impacted groups (DIGs) & Under-represented groups (URGs)



3) Vulnerable and complex needs

