



VRU Violence
Reduction
Unit
Nottingham City and Nottinghamshire



Children's Partnership Board

Tuesday 6^h December 2022

Natalie Baker Swift, Head of VRU



Purpose and remit

VRU core function is to offer **leadership** and, working with all relevant agencies operating locally, **strategic coordination** of the **local response** to serious violence.

VRU activity enabled by the funding **must support a multi-agency, 'public health' approach to preventing and tackling serious violence.**

Nottingham City and Nottinghamshire

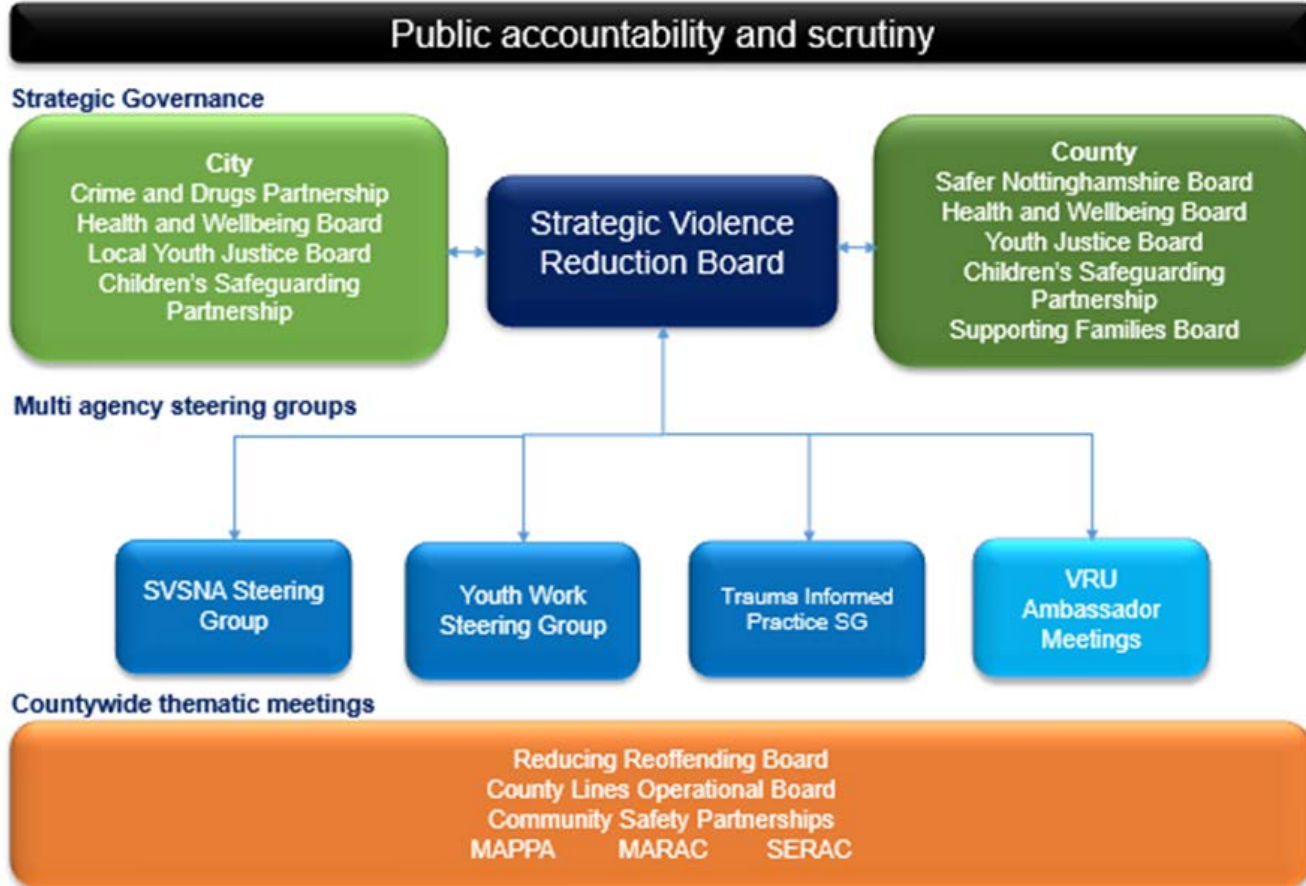
Mandatory products:

- Strategic Needs Assessment
- Response Strategy

Prevention and early intervention focus on children and young people up to 25 years



Partnership working



Multi-agency Board and team:

- Children's Services
- Youth Justice Services
- Public Health
- Health / NHS / CCG
- Education
- Police
- Prisons
- Probation
- Fire and Rescue
- Community representation

Nottingham and Nottinghamshire Violence Reduction Unit Strategic Framework 2022-25

Vision: Our vision is for Nottingham and Nottinghamshire communities to feel safe from violence and the fear of violence


Mission: We will work with communities to prevent violence and reduce its harmful impacts through developing a detailed understanding of its causes and investment in evidence based interventions that make a lasting difference

Public health principles:

- Focus on what will make a difference to whole populations
- Work as a whole system
- Intervene early to prevent issues emerging
- Consider the ‘causes of the causes’
- Ensure our work is evidence-informed

Community consensus approach:

- Collaboration
- Co-production
- Cooperation in data sharing
- Counter-narrative

Strategic priorities	Provide inclusive system leadership	Make best use of data sharing, insight and evidence	Deliver and evaluate early intervention and prevention activity
Objectives	<p>Lead on the implementation of the SV Duty</p> <p>Develop and implement a Trauma Strategy</p> <p>Co-design and deliver a Youth Work Strategy</p> <p>Deliver a strength based youth and community participation</p> <p>Support system change in collaboration with the education sector</p> <p>Develop and implement a sustainability plan</p>	<p>Develop and implement a three-year plan to improve the quality and accessibility of data across the partnership</p> <p>Identify evidence gaps and commission research that strengthens the voice of communities</p> <p>Design and implement a performance monitoring framework</p>	<p>Ensure interventions are responsive to the evidence base to create maximum impact</p> <p>Co-design, implement and evaluate:</p> <ul style="list-style-type: none"> • standardised educational interventions • place based interventions including: <ul style="list-style-type: none"> • Mentoring • Outreach • Diversion programmes • Contextual safeguarding • trauma informed interventions • a custody based intervention • a focussed deterrence intervention • domestic violence perpetrator programme 
Outcomes	<ul style="list-style-type: none"> • Partner organisations and practitioners’ are trauma informed • Practitioners in the VCS have equitable access to training and development • Risk factors are identified earlier on in the system and support put in place • CYP and communities are positively engaged • Shared partnership objectives to guide economic and cultural sustainability 	<ul style="list-style-type: none"> • Trends in SV are monitored • Vulnerable CYP and SV hotspot areas are described • Partners have access to relevant data sets to inform operational and strategic response to serious violence • Improved understanding of the difference in experiences of violence 	<ul style="list-style-type: none"> • Increased CYP/community resilience towards violence/crime • Increased evidence base around what works to reduce the causes of serious violence • Underlying risk factors for children and young people are supported/addressed

Serious Violence Duty: Strengthening Partnership Working

A duty placed on local organisations to collaborate and plan to prevent and reduce serious violence.

The following authorities are subject to the duty:

- Police
- Local authorities, inc. social care CSPs
- Youth Offending Teams
- Probation
- Fire and Rescue
- Health Authorities – CCGs

Educational institutions, prisons and secure settings for children and young people must also be consulted and must collaborate



Home Office

Serious Violence Duty

Preventing and reducing serious violence
Draft Guidance for responsible authorities

May 2021

[Issued on behalf of UK Government]

DRAFT

Serious Violence Duty Core Elements

- **Understanding local issues by sharing local data and intelligence** (output – Strategic Needs Assessment)
- **Preparation and implementation of a strategy** (output – Response Strategy)
- **Review** (output – Annual Report)



Commencement expected: Jan 2023

**Thank you for your
time...**

Any questions?





Reducing violence together

The Violence Reduction Unit (VRU) is bringing together specialists from health, police, local government, probation and community organisations to tackle violent crime and the underlying causes of violent crime.

Find out how you can help by visiting our website and joining the big conversation online.

#stopviolence



nottsvru.co.uk