

Arboretum

Area Committee Report

Unofficial December 2013
Data

Ward Priorities

Theme	Priorities	Key Actions	Outcome – Oct – Dec 2013	Lead
Safer	Reduce Anti Social Behaviour relating to Alcohol/drug use (on street.)	Increase the number of confiscations' Reduce drug/alcohol use on all of the local Park.	There have been 46 alcohol confiscations between October and December 2013 which is down from 126 on the previous quarter which is probably due to the hot summer period and down from 52 on the October-December 2012 period.	Police/ Community Protection
Neighbourhoods	Reduce Bins on street. Reduce Fly Tips & Dog Fowling.	Increase enforcement action. Increasing education of local residents.	There have been approximately 130 section 46 notices issued for bins on streets. City Services are still working to remove missed bins. City Services are working closely with enforcement to reduce incidents of dog fouling and educating dog owners to clean up after their dog. During January there will be on targeted streets operation starting with Newstead Grove.	Community Protection City Services
Families	Provide play & youth activities increase outreach work.	We plan to do an additional street session each week, and strive to support local residents with local initiatives within the ward	Hyson Green Youth Club – Football/ Basketball – 1,095 Males & 180 Females (13-18yrs). Deaf Club- Males 14 & Females 48 (13-25 yrs) Street Sessions Males 125 & Females 62 (All Ward) Targeted Projects Males 31 & Females 33.	Central Family & Community Team

Health	Raise Awareness of Better Health	Increase opportunities and affordable Physical activities 4 x Weaning Education Groups 1 eatwell for life session	Try a new sport for free' initiative. Data not yet available Change Maker 'happy hearts' walk. 10 people took part. 2 week session at the Hyson Children's Centre. 6 sessions at the Hyson Green Children's centre.	Decade Of Better Health Sports & Leisure Nottingham Community Nutrition and Dietetic Service.
Working	Increase in training and employment opportunities.	Increase Funding Training and Education Service to support residents who need help in accessing job search, training courses, CV writing	2 years of funding secured for unemployed 18 – 24 years olds to access, training and jobs in the area through the Youth Contract. Delivery model and partners being developed. In discussions with Castle Cavendish about employment priorities for their funding 2014/15.	Kevin Bartlett Economic Development

Community Engagement

Ward Walks

Area/Estate	Date/Time	Meeting Point
Arboretum Patch 1 Arboretum Patch 2	.08/10/13 at 10.00pm – 12. 15/10/ 13 at 10.00pm - 12	Mary Potter Centre
Hyson Green Patch 1	14/11/13 at 1.00am – 12	Mary Potter Centre
Hyson Green 2 WOA Ward Walk HG 1	11/12/13 at 1.00pm -3. 29/12/13 at 4.00pm - 3	Mary Potter centre St Paul's Avenue

Community Meetings

Group	Date	Venue
LAG NCH Area 4 Panel	09/10/13 at 6.30- 8.00 pm 13/11/13 at 3.00 – 5.30pm	Mary Potter centre
NBFE	11/10/13, 13/11/13 – 5.30 -7.30pm 15/10/13 at 01 – 2.30pm	Hyson Green Community Centre New Brook House
St Paul's & Pleasant Row Residents meeting	29/10/13 at 5.30- 8pm 14/01/13 at 6.00 – 8pm	Mary Potter Centre
Community partnership Forum	23/10/13 at 11-12.30pm, 08/10/13, 11/09/13, 18/11/13 at 6-8pm 20/11/12, 18/12/13 at 6-8pm	Newton Building Mary Potter Centre Marcus Garvey Centre

Community Engagement

Events Delivered

Event	Lead Partners	Date/Time	Venue
Arboretum Week Of Action General awareness Event Black History Event Dog Micro Chipping	Neighbourhood Development Team & Partners	28/10/13 – 01/11/13 30/10/13, 01/11/13 at 10am -3pm 31/10/13, 10-4 pm	Brushfield Street Area & Events at Mary Potter Centre Forest Rec
Christmas Tree Light Switch On.	Neighbourhood Management Parks Depart	21/11/13 15/12/13	Canning Arboretum Rec
NCC Funding update & Regional partnership working	Community partnership Forum	20/11/13 at 6-8pm,	Marcus Garvey Centre
Budget Consultation Event	Neighbourhood Services	29/10/13 at 5.30pm – 8.00.	Mary Potter Centre

Future Events and Activities Planned

Event	Lead Partners	Date/Time	Venue
LAG Meeting Community Partnership Mt	Police Community Partnership Forum	08/01/13 at 6.00 – 7.30pm 27/01/13 at 6.00 – 8.00pm	Mary Potter Centre Marcus Garvey Centre
Budget Consultation	Neighbourhood Development Team	03/02/14 at 6.30 – 8.00pm	Mary Potter Centre
Vulnerable young peoples event	NCVS	22/01/14	NCVS

Finance

Ward Councillor Budgets

Total Amount allocated this period £2,000

Budget Remaining Unallocated £8,666(inc of 2013-14 allocation)

Area Capital Fund

Total Amount allocated this period £2,260

Budget Remaining Unallocated £128,659 (inc of 2013-15 allocation)

Others – Section 106, NCH Environmentals, Other Funding

£0(this period)

Ward Summary

Crime data is shown below for both the current month compared to last year and the year to date.

Ward	Type	Dec-12	Dec-13	Volume +/-	% Change	YTD 12-13	YTD 13-14	Volume +/-	% Change
ARBORETUM	Autocrime	7	7	0	0%	59	63	4	7%
	Burglary	28	9	-19	-68%	138	108	-30	-22%
	Burglary Other	3	1	-2	-67%	30	34	4	13%
	Damage	10	16	6	60%	130	140	10	8%
	Drugs	9	8	-1	-11%	84	104	20	24%
	Fraud	1	1	0	0%	12	7	-5	-42%
	Other	2	5	3	150%	27	37	10	37%
	Personal Robbery	5	2	-3	-60%	45	62	17	38%
	Robbery Business	1		-1	-100%	5	1	-4	-80%
	Sexual	2	5	3	150%	32	41	9	28%
	Theft	17	12	-5	-29%	174	210	36	21%
	Threats	3	5	2	67%	26	24	-2	-8%
	Violence	28	27	-1	-4%	197	278	81	41%
ARBORETUM Total	All Crime	116	98	-18	-16%	959	1109	150	16%
	ASB	53	76	23	43%	712	757	45	6%

The summary below shows only year to date figures, and in the case of public realm and fire data, will generally be a month in arrears.

Type	YTD 12-13	YTD 13-14	Volume +/-	% Change
Domestic Violence Crime	74	92	18	24%
Night Time Economy Violence	4	3	-1	-25%
Hate Crime	10	17	7	70%
Deliberate Fires	13	18	5	38%
Cleanliness (Average Score)	85	87	2	2%
Graffiti	224	266	42	19%
Fly-Tipping	356	556	200	56%

Priorities & Targets

The Central Locality has targets to reduce Dwelling Burglary, Shop Theft and Violence.

Arboretum, as a High Impact Ward, has targets to reduce Dwelling Burglary, Theft and Violence. Arboretum is currently meeting targets in all but the Violence Category.

Performance against Targets is set out below for both the Locality as a whole and Arboretum

Locality Target Summary																
Locality	Crime Type	Apr-13	May-13	Jun-13	Jul-13	Aug-13	Sep-13	Oct-13	Nov-13	Dec-13	Jan-14	Feb-14	Mar-14	YTD	Proposed year end Position	+/- Target Position
Central	Dwelling Burglary	96	77	71	65	56	59	55	79	69	75	75	75	627	890	-38
	Shop Theft	88	71	96	55	54	27	54	52	57	40	40	40	554	644	30
	Violence	96	114	115	130	130	110	145	109	113	84	84	84	1062	1173	141

High Impact Ward Target Summary																	
Locality	High Impact Ward	Crime Type	Apr-13	May-13	Jun-13	Jul-13	Aug-13	Sep-13	Oct-13	Nov-13	Dec-13	Jan-14	Feb-14	Mar-14	YTD	Proposed year end Position	+/- Target Position
Central	Arboretum	Dwelling Burglary	16	19	14	6	12	12	8	12	9	15	15	15	108	172	-19
		Theft	24	23	23	22	21	11	19	19	12	16	16	16	174	225	-3
		Violence	21	29	24	29	33	29	52	34	27	20	20	20	278	276	62

Ward Performance

The table below shows how Arboretum is performing year to date for All Crime and ASB in comparison to the other wards on the Division. High Impact wards are highlighted in blue.

Arboretum is showing the greatest increase in All Crime and ASB compared to the other High Impact Wards and the second highest increase in All Crime across all wards.

Dec 2013		All Crime				ASB			
Locality	Ward	YTD 12/13	YTD 13/14	Change	% Change	YTD 12/13	YTD13/14	Change	% Change
Central	ARBORETUM	968	1109	141	14.6%	712	757	45	6.3%
	BERRIDGE	1149	1171	22	1.9%	821	737	-84	-10.2%
	DUNKIRK & LENTON	807	744	-63	-7.8%	348	273	-75	-21.6%
	RADFORD & PARK	1119	1150	31	2.8%	605	682	77	12.7%
	SHERWOOD	780	985	205	26.3%	351	388	37	10.5%
	WOLLATON EAST & LENTON ABBEY	330	354	24	7.3%	110	117	7	6.4%
	WOLLATON WEST	377	430	53	14.1%	140	138	-2	-1.4%
Central Total		5530	5943	413	7.5%	3087	3092	5	0.2%
City	CITY CENTRE	6138	5638	-500	-8.1%	2160	1872	-288	-13.3%
North	ASPLEY	1326	1194	-132	-10.0%	755	704	-51	-6.8%
	BASFORD	903	940	37	4.1%	542	511	-31	-5.7%
	BESTWOOD	734	808	74	10.1%	491	643	152	31.0%
	BILBOROUGH	968	956	-12	-1.2%	615	611	-4	-0.7%
	BULWELL	1438	1428	-10	-0.7%	919	822	-97	-10.6%
	BULWELL FOREST	689	735	46	6.7%	345	403	58	16.8%
	LEEN VALLEY	547	583	36	6.6%	304	309	5	1.6%
North Total		6605	6644	39	0.6%	3971	4003	32	0.8%
South	BRIDGE	763	648	-115	-15.1%	441	414	-27	-6.1%
	CLIFTON NORTH	527	545	18	3.4%	296	313	17	5.7%
	CLIFTON SOUTH	747	578	-169	-22.6%	458	454	-4	-0.9%
	DALES	790	877	87	11.0%	529	613	84	15.9%
	MAPPERLEY	837	901	64	7.6%	467	448	-19	-4.1%
	ST ANNS	847	941	94	11.1%	822	801	-21	-2.6%
South Total		4511	4490	-21	-0.5%	3013	3043	30	1.0%
Division		22784	22715	-69	-0.3%	12231	12010	-221	-1.8%
Previous Month's Performance					1.0%				-2.8%

Exception Reporting

Dwelling Burglary

Dwelling Burglary is showing both a month to date and year to date reduction.

Theft

Although Theft offences have seen a reduction compared to the same month last year, there is still a year to date increase. The table below shows the type of Theft offences occurring on the ward for the year to date. Also included is the percentage of Theft offences that related to the theft of a mobile phone.

In December Theft offences nearly halved compared to the previous month and show their lowest level to date. The figures also show that none of the offences in December related to the theft of a mobile phone.

Offence	Apr	May	Jun	Jul	Aug	Sep	Oct	Nov	Dec	Total
ABSTRACTING ELECTRICITY		1			1					2
THEFT BY EMPLOYEE				1						1
THEFT FROM AUTO MACHINE OR METER		1					1			2
THEFT FROM PERSON	2	4	3	2	3	3	13	6		36
THEFT FROM SHOP	7	3	3	3	4	4	2	6	4	36
THEFT IN DWELLING OTHER THAN AUTO MACHINE OR METER	6	5	5	4	4	2	3	5	1	35
THEFT OR UNAUTHORISED TAKING OF PEDAL CYCLE	1	2	2	2	3	2	1	1	3	17
THEFT OR UNLAWFUL TAKING OF MAIL	1									1
THEFT OTHER	9	11	13	12	9	3	12	7	4	80
Total	26	27	26	24	24	14	32	25	12	210
Phone Theft	12%	26%	46%	42%	21%	36%	56%	28%	0%	32%

Exception Reporting (continued)

Violence

Violence has reduced by one offence compared to the same month last year, but continues to show an increase for the year to date. The table below shows the type of violence occurring on a monthly basis together with the percentage of violence that is related to Domestic Violence. Although this month has seen relatively low levels of violence, the percentage of domestic violence is at its highest on the ward.

Offence	Apr	May	Jun	Jul	Aug	Sep	Oct	Nov	Dec	Total
ASSAULT WITH INJURY	8	16	14	18	17	20	30	19	12	156
COMMON ASSAULT	10	9	8	9	8	6	17	11	7	86
RACIALLY/RELIGIOUSLY AGGRAVATED HARASSMENT INC SEC 4 AND 5 POA	2	2	1		2	2	4		1	14
ASSAULT WITH INTENT TO CAUSE SERIOUS HARM	1	1	1	2	3	1	1		4	14
ASSAULT ON A CONSTABLE		1			2			3		6
HARASSMENT (PROTECTION FROM HARASSMENT)	1						1		3	5
FEAR/PROVOCATION VIOLENCE (SEC 4 POA)	1		1	1						3
HARASSMENT/ALARM/DISTRESS (SEC 5 POA)	1	1								2
CRUELTY TO CHILDREN/YOUNG PERSONS					1					1
KIDNAPPING/FALSE IMPRISONMENT								1		1
Total	24	30	25	30	33	29	53	34	27	288
DV Related	17%	43%	32%	33%	36%	21%	19%	41%	52%	32%

All Crime

Arboretum continues to have the highest crime rate per 1000 population for All Crime, Burglary, Robbery and Violence. A full breakdown of the crime rates for each ward can be found on page 8. Arboretum also has the highest rate for ASB and the ward breakdown can be found on page 9.

Micro Beat

The table below shows the level of crime and ASB on the Arboretum micro beat on a monthly basis. This shows that levels of crime, and in particular ASB have reduced on the micro beat in the past 2 months.

In December, crime in the micro beat area accounted for 22% of all crime in Arboretum. The micro beat also accounts for 22% of All Crime in Arboretum for the year to date. Similarly for the year to date 21% of ASB in Arboretum occurs in the micro beat but this percentage dropped to 16% during December.

Crime Type	Apr	May	Jun	Jul	Aug	Sep	Oct	Nov	Dec	Total
Autocrime	4	2	1	2	1	1	1			12
Burglary	2	1			4	4	3	4	2	20
Burglary Other		2						3		5
Damage	2	3	4	1	1	2	4	1	6	24
Drugs	4	3	7	5	4	1	2	1	3	30
Fraud	1	1		1			1			4
Other	1			2	4	2		1	1	11
Personal Robbery	3		2	2				1	1	9
Sexual		1	1			1	1		1	5
Theft	7	13	3	10	8	6	4	4	3	58
Threats		1				2				3
Violence	3	9	7	4	8	7	9	6	5	58
All Crime	27	36	25	27	30	26	25	21	22	239
ASB	22	19	17	20	22	17	18	9	12	156

Crime Figures

Crime Types by Rate (per 1000 of population) of the 20 Wards – Figures are Year to Date 2013/14

WARD	ALL CRIME	AUTOCRIME	BURGLARY	DAMAGE	PERSONAL ROBBERY	THEFT	VIOLENCE
ARBORETUM	99.06	5.74	9.60	12.56	5.47	15.52	24.85
ASPLEY	67.76	5.96	5.45	11.80	0.91	10.55	17.25
BASFORD	57.44	7.10	5.43	9.87	1.23	10.43	13.39
BERRIDGE	62.46	7.24	5.84	9.17	1.07	14.21	12.49
BESTWOOD	48.23	3.46	5.19	9.91	1.07	6.21	11.58
BILBOROUGH	56.87	6.73	5.36	10.24	0.95	8.99	12.68
BRIDGE	64.90	3.59	1.64	8.31	1.23	26.04	11.69
BULWELL	88.38	5.69	5.08	18.51	1.92	21.97	17.21
BULWELL FOREST	53.84	3.53	4.04	10.06	1.47	14.25	10.65
CLIFTON NORTH	41.43	3.03	4.11	8.69	1.16	5.66	8.46
CLIFTON SOUTH	41.44	2.51	5.31	7.10	0.86	7.31	10.76
DALES	53.28	4.56	2.73	10.08	0.49	11.36	11.54
DUNKIRK AND LENTON	67.95	10.26	6.68	6.41	0.73	21.43	9.43
LEEN VALLEY	54.48	4.58	5.61	8.78	1.68	11.12	10.00
MAPPERLEY	56.42	7.64	4.48	7.83	0.57	10.73	10.67
RADFORD AND PARK	58.59	8.17	6.43	5.41	1.89	16.69	8.93
SHERWOOD	62.09	5.64	5.97	6.49	1.82	21.41	11.16
ST ANNS	66.80	4.65	3.79	12.10	3.79	7.30	18.61
WOLLATON EAST AND LENTON ABBEY	35.57	3.11	5.73	3.62	0.30	12.86	3.52
WOLLATON WEST	29.03	4.75	4.14	3.39	0.27	7.67	2.85
WARD AVERAGE	58.30	5.40	5.13	9.02	1.44	13.09	11.89

All ASB Figures

All ASB by Rate (per 1000 of population) of the 20 Wards)

WARD	RATE (PER 1000 OF POP.) Dec 2013
ARBORETUM	6.82
ASPLEY	3.40
BASFORD	3.64
BERRIDGE	2.36
BESTWOOD	3.64
BILBOROUGH	3.22
BRIDGE	3.08
BULWELL	3.65
BULWELL FOREST	2.79
CLIFTON NORTH	2.25
CLIFTON SOUTH	2.01
DALES	3.95
DUNKIRK & LENTON	1.47
LEEN VALLEY	3.92
MAPPERLEY	2.02
RADFORD & PARK	2.14
SHERWOOD	1.62
ST ANNS	5.23
WOLLATON EAST & LENTON ABBEY	0.80
WOLLATON WEST	0.47
WARD AVERAGE	2.92

Fire

Table: Volume of Deliberate Primary and Secondary Fires by Ward

Fire Data									
Locality	Ward	Nov-12	Nov-13	Volume +/-	% Change	Ytd 12-13	Ytd 13-14	Volume +/-	% Change
Central	Arboretum	2	0	-2	-100%	13	18	5	38%
	Berridge	7	3	-4	-57%	35	29	-6	-17%
	Dunkirk and Lenton	1	2	1	100%	5	7	2	40%
	Radford and Park	1	1	0	0%	24	14	-10	-42%
	Sherwood	0	3	3	29900%	9	15	6	67%
	Wollaton East and Lenton Abbey	0	0	0	-100%	6	6	0	0%
	Wollaton West	0	0	0	-100%	2	3	1	50%
Central Locality		11	9	-2	-18%	94	92	-2	-2%
North	Aspley	1	0	-1	-100%	45	34	-11	-24%
	Basford	4	2	-2	-50%	40	26	-14	-35%
	Bestwood	5	0	-5	-100%	31	37	6	19%
	Bilborough	3	2	-1	-33%	34	19	-15	-44%
	Bulwell	6	7	1	17%	60	56	-4	-7%
	Bulwell Forest	0	1	1	9900%	28	12	-16	-57%
	Leen Valley	3	2	-1	-33%	20	20	0	0%
North Locality		22	14	-8	-36%	258	204	-54	-21%
South	Bridge	0	2	2	19900%	10	14	4	40%
	Clifton North	1	2	1	100%	10	9	-1	-10%
	Clifton South	2	1	-1	-50%	17	25	8	47%
	Dales	1	1	0	0%	6	13	7	117%
	Mapperley	2	0	-2	-100%	14	10	-4	-29%
	St. Anns	2	1	-1	-50%	22	23	1	5%
South Locality		8	7	-1	-13%	79	94	15	19%
Division		41	30	-11	-27%	431	390	-41	-10%

Note: Where ward boundaries overlap with the City Centre fires that occurred in the City Centre have been **included** in the ward figures.

Community Protection

Data has been received from Community Protection and where postcodes have been listed these have been geo-coded and mapped to determine the Ward. All addresses relate to the address of the Perpetrator.

FPNs are not currently available at ward level.

In December 2013 the following orders were issued:

- **2 x Statutory Notices for the Environment**
- **1 x ASBO on Conviction for ASB**

For enquiries regarding Community Protection court outcomes please contact the Operational Manager for the locality.

Cleanliness Index

Cleanliness Index
Score

88

Performance compared to
previous year

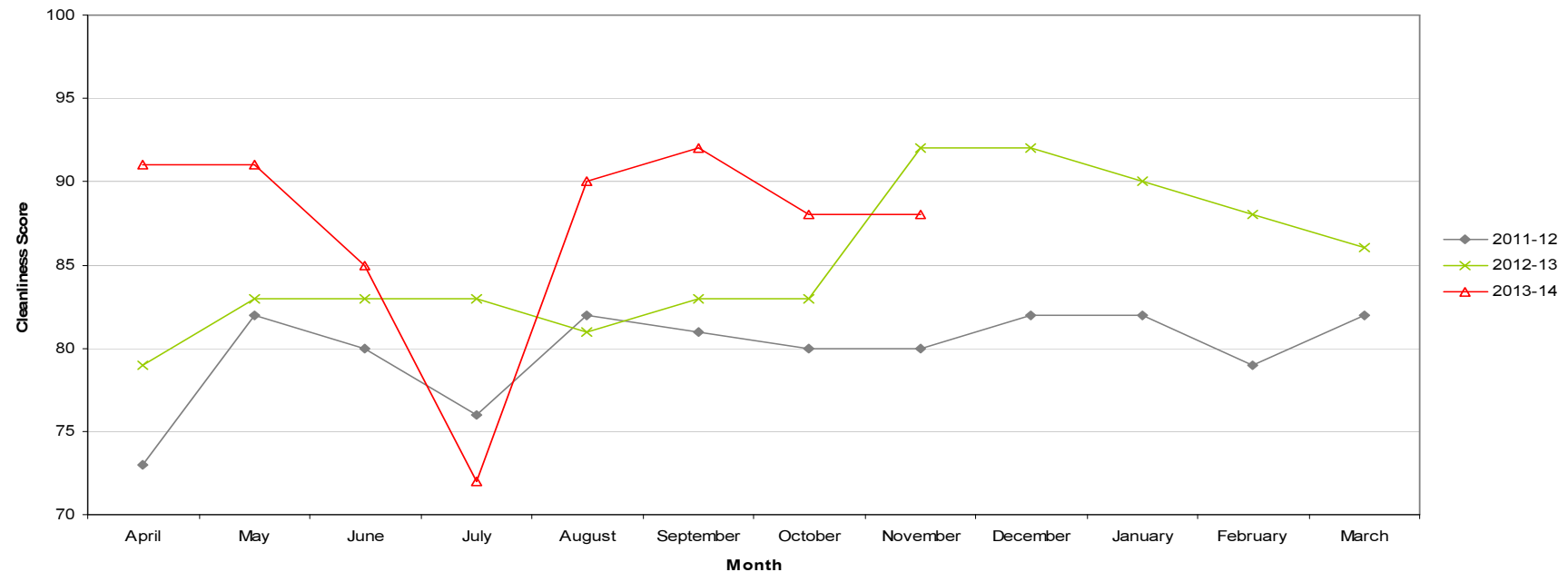
Performance compared to
neighbourhoods target
of 86

- All data refers to a comparison with the previous year's month

- It is proposed that performance over time graphs be used for each indicator

- Historic data for comparison is not available for dog fouling

Cleanliness Index - Arboretum

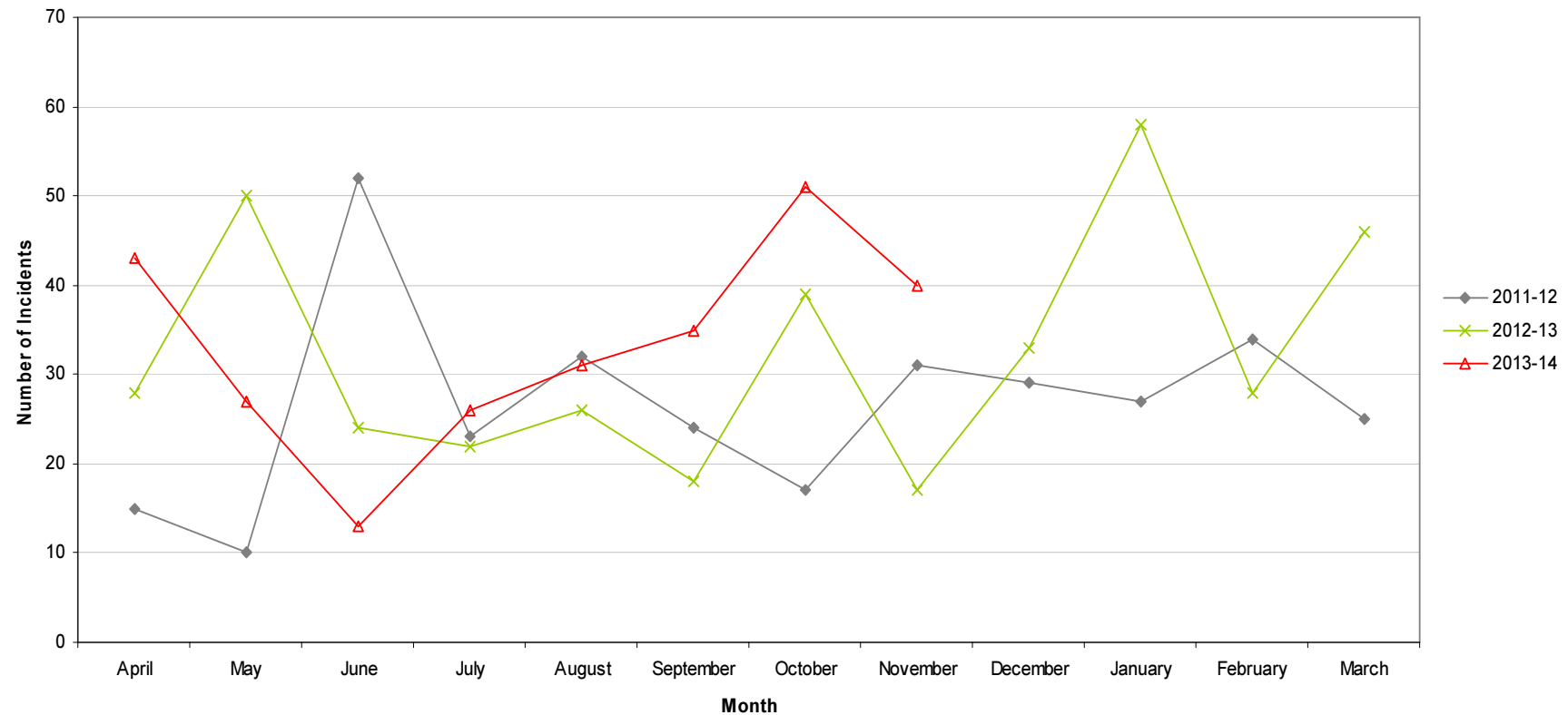


Graffiti Reports

RED	40 incidents	Increase of 23
AMBER		
GREEN		

- All data refers to a comparison with the previous year's month
- It is proposed that performance over time graphs be used for each indicator
- Historic data for comparison is not available for dog fouling

Incidents of Graffiti - Arboretum

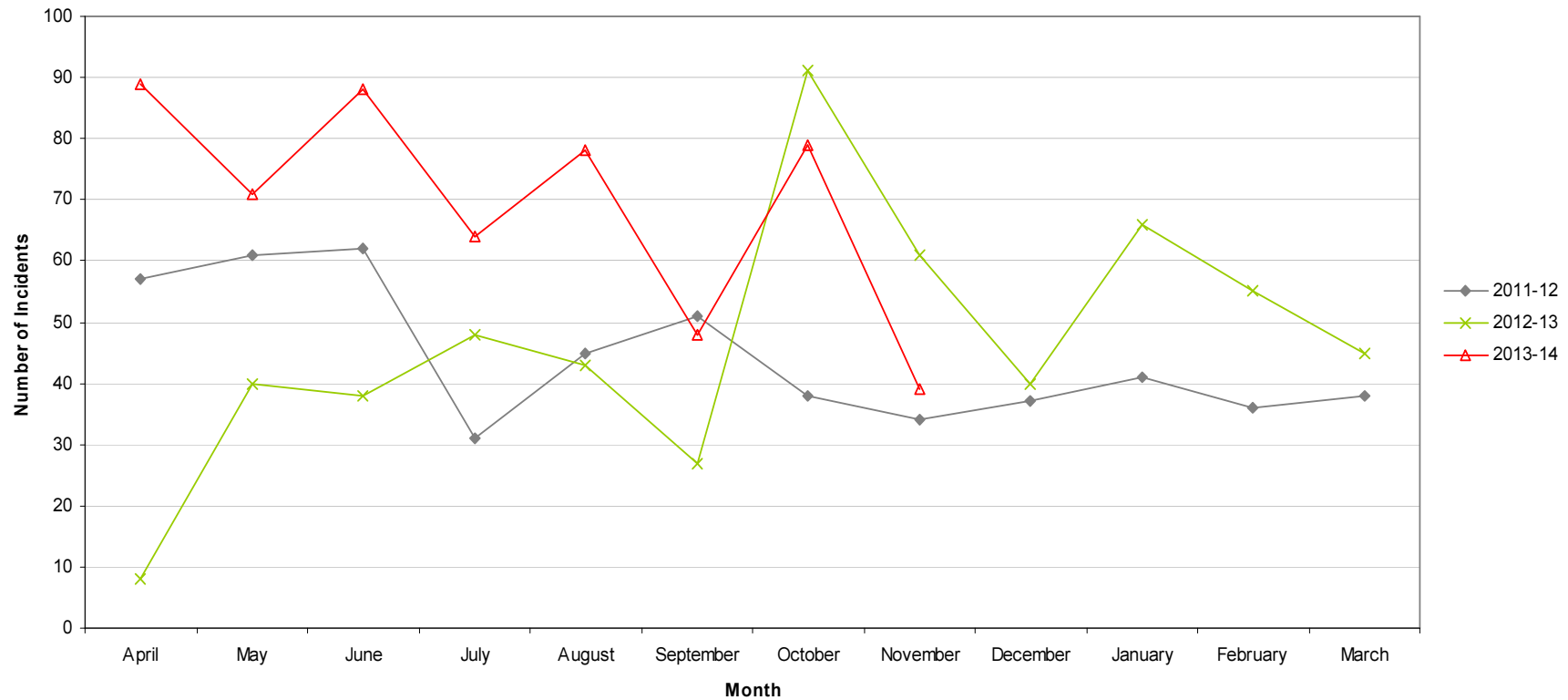


Fly Tipping

RED		
AMBER		
GREEN	39 incidents	Decrease of 22

- All data refers to a comparison with the previous year's month
- It is proposed that performance over time graphs be used for each indicator
- Historic data for comparison is not available for dog fouling

Incidents of Fly Tipping - Arboretum



Housing

Ward Report - Arboretum

Generated on: 18 December 2013







ARWA1 Anti-social behaviour





Performance indicator and definition	Target	2013/14			2012/13	2011/12
		Value	Status	Long Trend	Value	Value
% of ASB cases resolved by first intervention – Central region <i>Note: This PI monitors how many ASB cases NCH resolved on the first intervention e.g. written warning. Data for this indicator is not available by ward and is reported by Housing Office.</i>	76%	84.55%			78.92%	
% of ASB cases resolved – Central region <i>Note: This PI measures the proportion of ASB cases NCH has successfully resolved. Data for this PI is not available by ward and is reported by Housing Office.</i>	97.8%	100%			100%	97.53%
Number of new ASB cases – Central region <i>Note: Data for this PI is only available by Housing Office.</i>		104			144	229
Tenant satisfaction with the ASB service - Central region <i>Note: Data for this PI is only available by Housing Office.</i>	8	7.48			6.95	6

Housing

ARWA2 Repairs







Performance indicator and definition	Target	2013/14			2012/13	2011/12
		Value	Status	Long Trend	Value	Value
% of repairs completed in target – Arboretum ward <i>Note: This PI monitors the proportion of repairs being completed within agreed timescales.</i>	96%	96.24%			92.04%	95.42%
Tenant satisfaction with the repairs service <i>Note: Data for this PI is only available citywide</i>	8.8	8.69			8.64	8.65

ARWA3 Rent Collection



Performance indicator and definition	Target	2013/14			2012/13	2011/12
		Value	Status	Long Trend	Value	Value
% of rent collected – Central region <i>Note: This PI measures the amount of rent collected (including tenant arrears) as a percentage of rent due for the current year. Data for this indicator is not available by ward and is reported by Housing Office.</i> <i>Trend shows as improving if value is over 100% as arrears are decreasing.</i>	8.3%	99%			100.5%	100.6%
% of tenancies ending due to eviction <i>Note: This PI monitors the percentage of tenants being evicted due to rent arrears and is reported citywide.</i>	0.75%	0.69%			0.55%	0.61%

Housing

ARWA4 Empty properties







Performance indicator and definition	Target	2013/14			2012/13	2011/12
		Value	Status	Long Trend	Value	Value
Average void re-let time (calendar days) – Arboretum ward <i>Note: This PI measures how long it takes NCH to re-let empty properties from the end of the old tenancy to the start of the new tenancy.</i>	25	58.46			25.82	24.28
Number of empty properties awaiting decommission – Arboretum ward <i>Note: This PI shows the number of empty properties which will not be re-let and includes those being decommissioned and / or demolished.</i>		53			52	56
Number of lettable voids – Arboretum ward <i>Note: Lettable voids are empty properties available for re-letting. They will receive repair work and then be re-let to a new tenant.</i>		2			5	9

ARWA5 Tenancy sustainment

Performance indicator and definition	Target	2013/14			2012/13	2011/12
		Value	Status	Long Trend	Value	Value
Percentage of new tenancies sustained - Arboretum Ward (2003) <i>Note: This PI measures the number of new tenants who are still in their tenancy 12 months later.</i>	93.5%	87.5%			78.38%	

Housing

Key:

-  Performance on or exceeding target
-  Performance below target
-  Data only performance indicator
-  Performance has improved compared to two years ago
-  Performance has deteriorated compared to two years ago
-  Performance unchanged

Data prepared by Nottingham City Homes Performance Team

For more information please contact Jonathan Hurst, Performance Data Officer on 0115 9157368 or Marcus Parton, Performance Analyst on 0115 915715

Methodology

Data has not been audited or verified and therefore must only be used as a reflection of crime.

Crime data and ASB calls have been extracted from the Police systems and mapped to ascertain which Ward they occurred in.

Where a ward boundary overlaps with the City Centre, crime data and ASB calls relating to the City Centre have been removed.

Where possible the most recent data is used, although for some areas this may be a month further in arrears.

Discussions continue with other agencies regarding what further data can be included.