

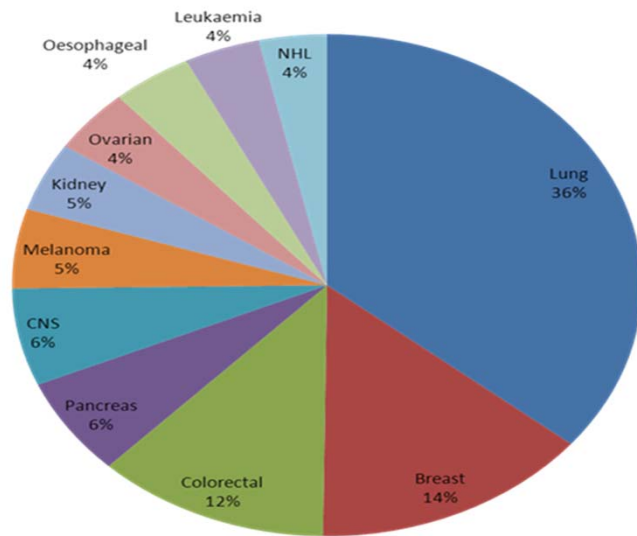
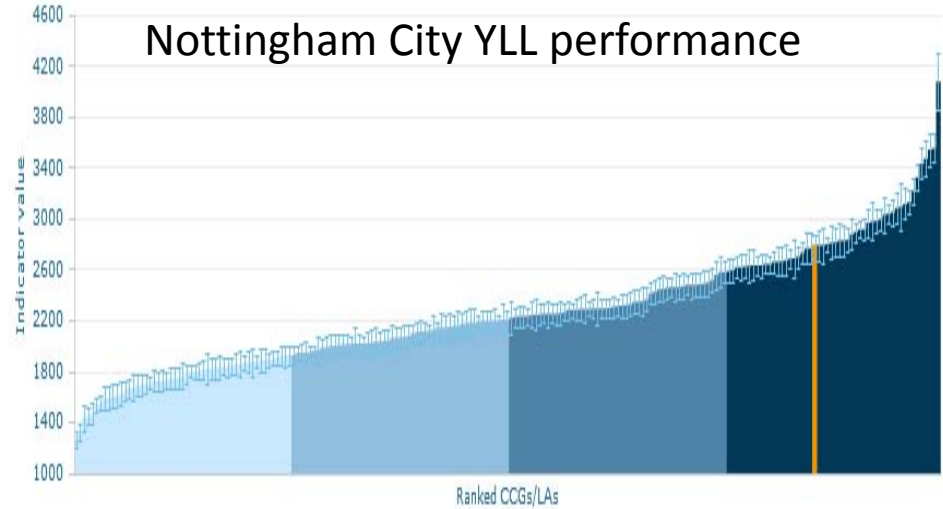
Lung Health checks / cancer screening

Simon Castle

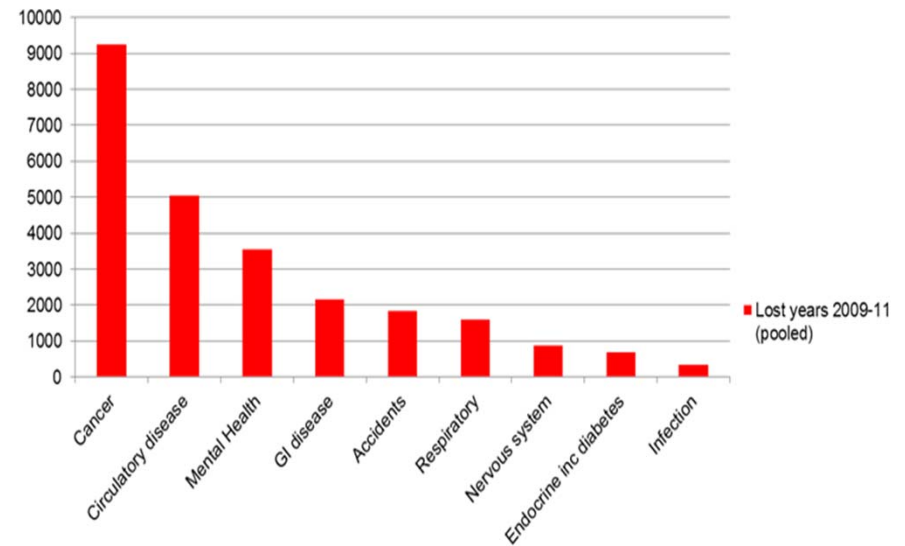
Assistant Director – Cancer
Commissioning

Mortality

- Cancer is the **biggest cause of death from illness or disease in every age group**, from the very youngest children through to old age.
- Cancer accounts for **22%** of **premature** mortality (Years Life Lost)



Lost years 2009-11 (pooled)





4 IN 10 CANCERS CAN BE PREVENTED

These are proven ways to reduce the risk of cancer. Larger circles indicate greater impact on cancer risk.

LIFESTYLE



OTHER

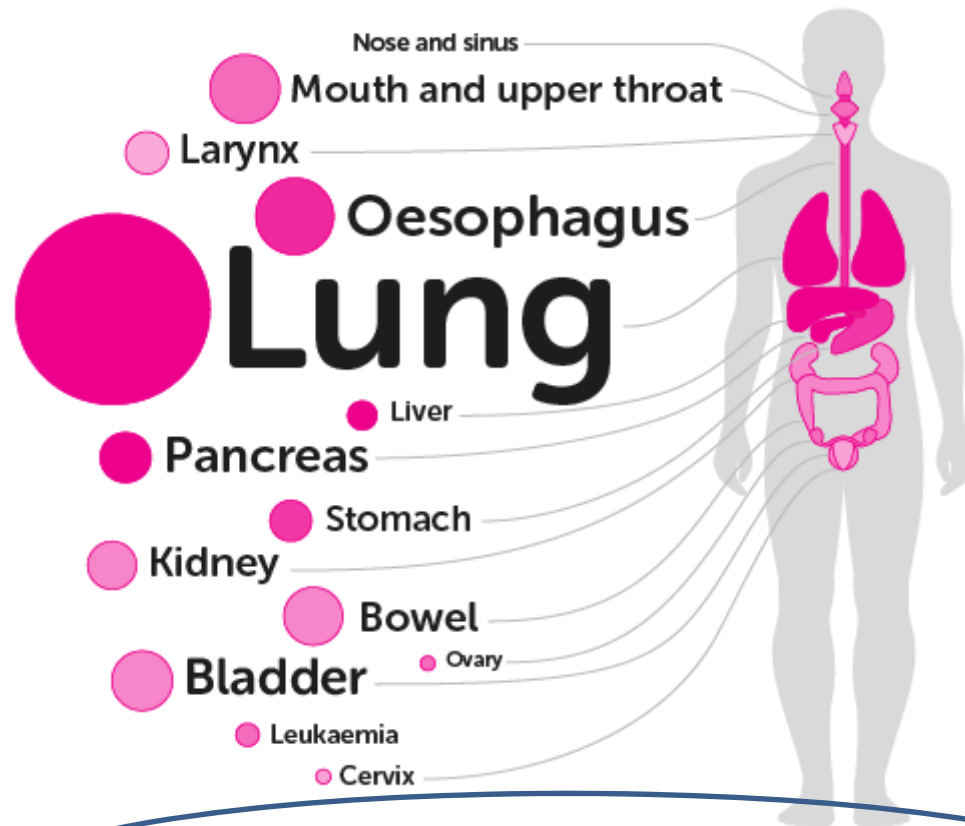


Let's beat cancer sooner
cruk.org/health



SMOKING CAUSES 14 TYPES OF CANCER

64,500 cancers are caused by smoking each year in the UK. They are:



The size of the circle shows how many cancer cases are caused by smoking.
Darker circles show types of cancer where survival is lowest.

The number of nose and sinus cancer cases caused by smoking is not estimated because the precise smoking-related risk increase is not known.

- Experts agree that tobacco is the single biggest avoidable cause of cancer in the world [1, 2](#).
- Smoking causes over a quarter (28 per cent) of cancer deaths in the UK and nearly one in five cancer cases [3, 4](#).

And smoking doesn't only cause cancer. It also causes tens of thousands of deaths each year in the UK from other conditions, including heart and lung problems [3](#).

Incidence

[← Back to Overview](#)

Cancer incidence for all cancers combined



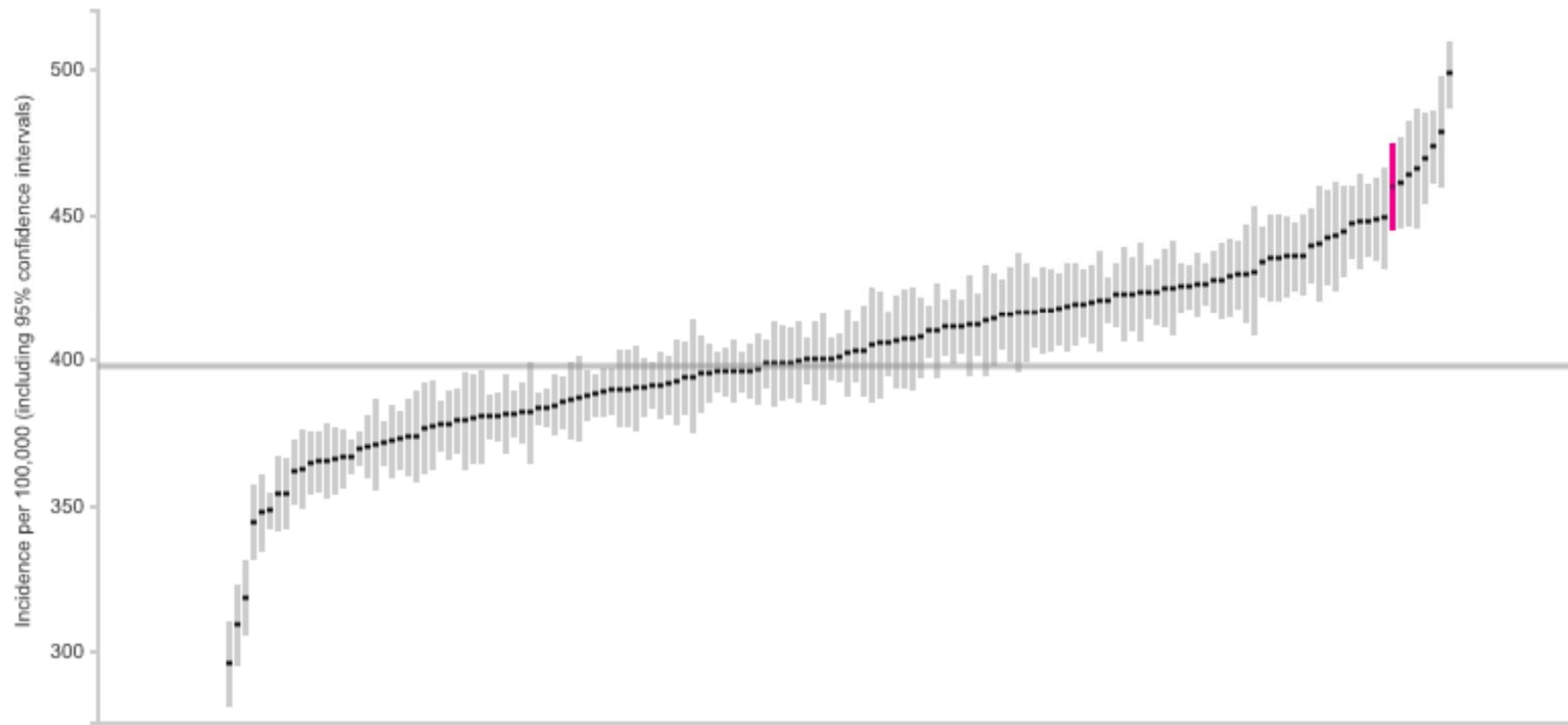
459.6

Nottingham City (PCT)

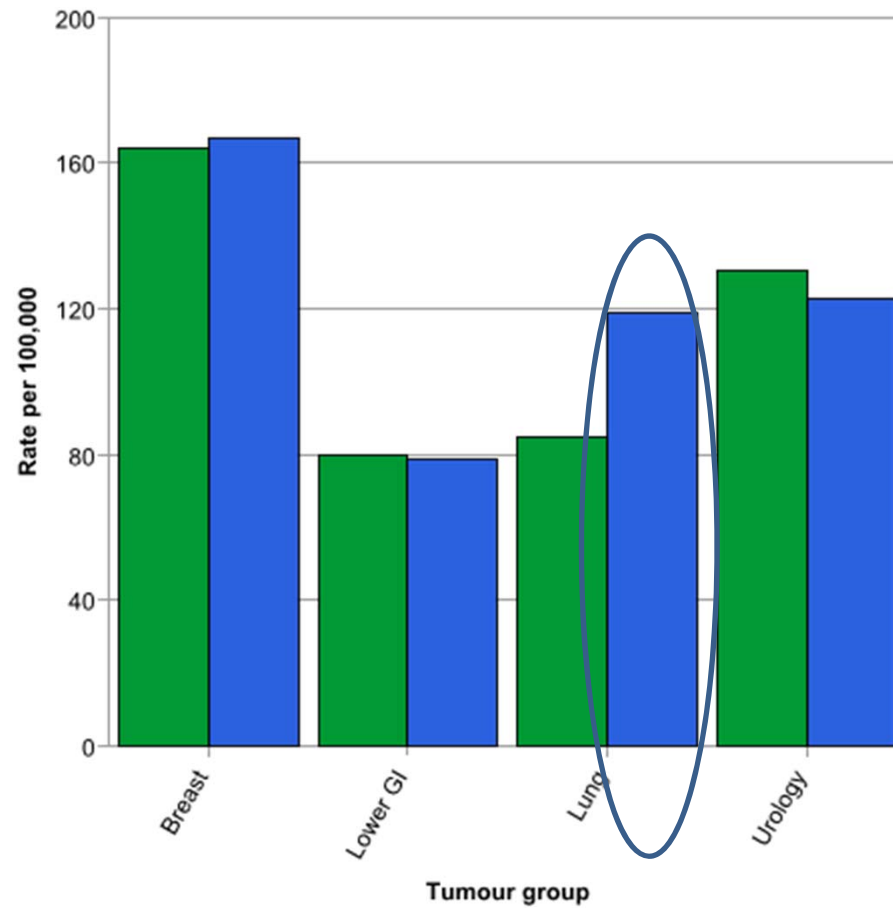


398.1

National Average



Nottingham (blue) Age-Standardised Incidence rate by tumour group, 2012 – Lung cancer dominates

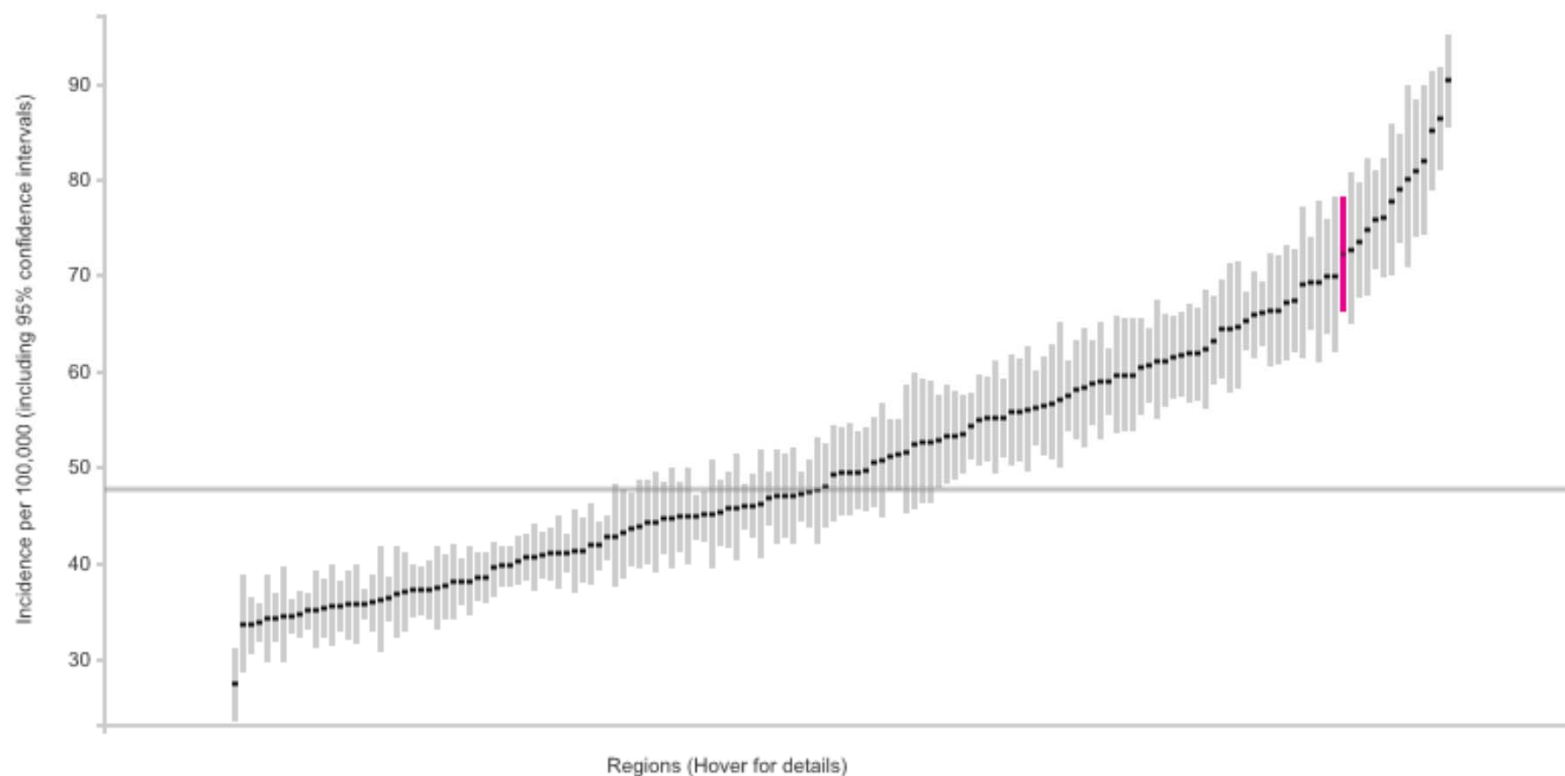


Lung Cancer

[← Back to Overview](#)

Lung Incidence Rate

 72.1 Nottingham City (PCT)	 47.7 National Average
---	--



Lung Cancer

[Back to Overview](#)

Lung Mortality Rate

53.8
Nottingham City (PCT)

38.3
National Average

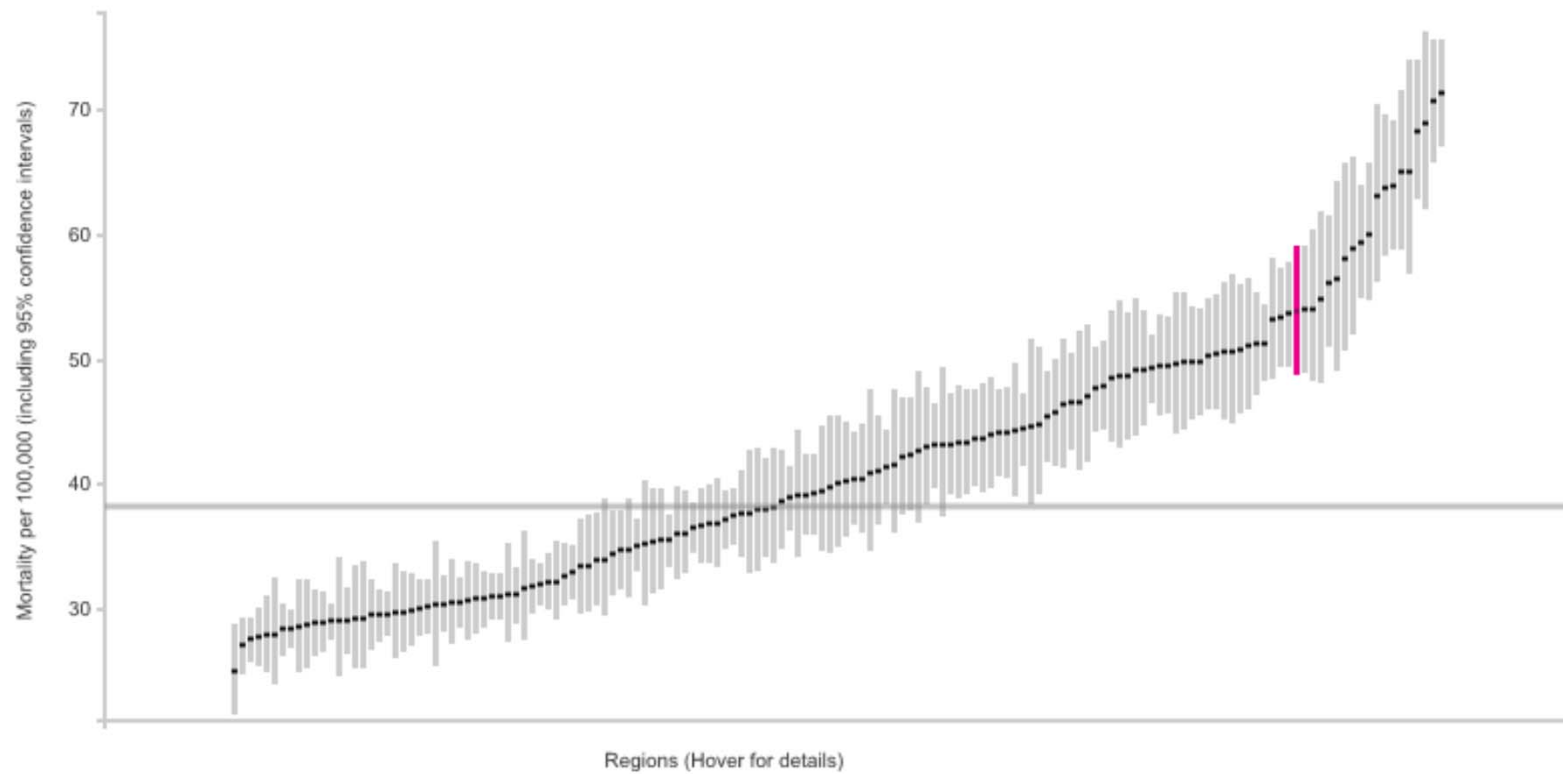
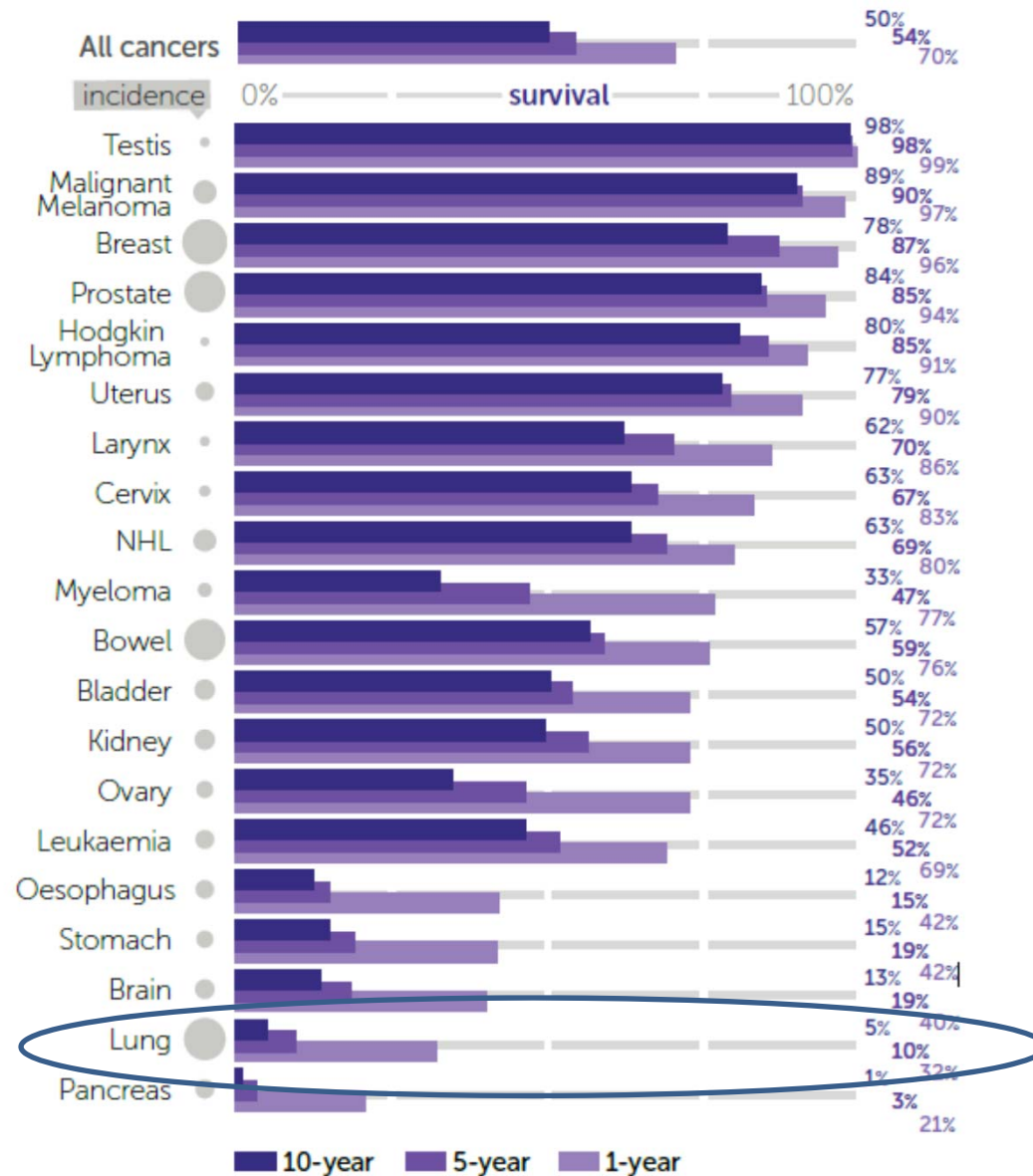
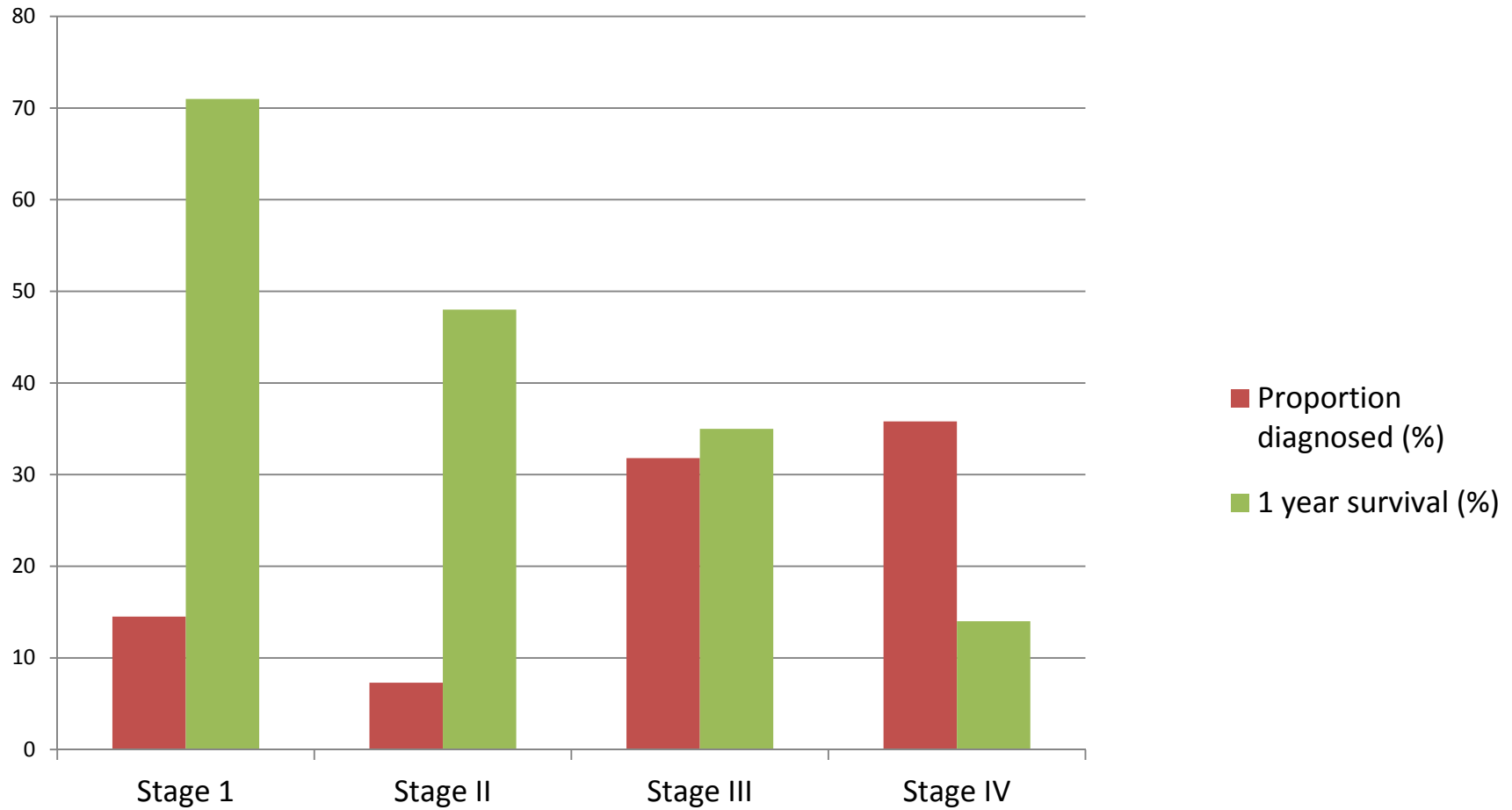


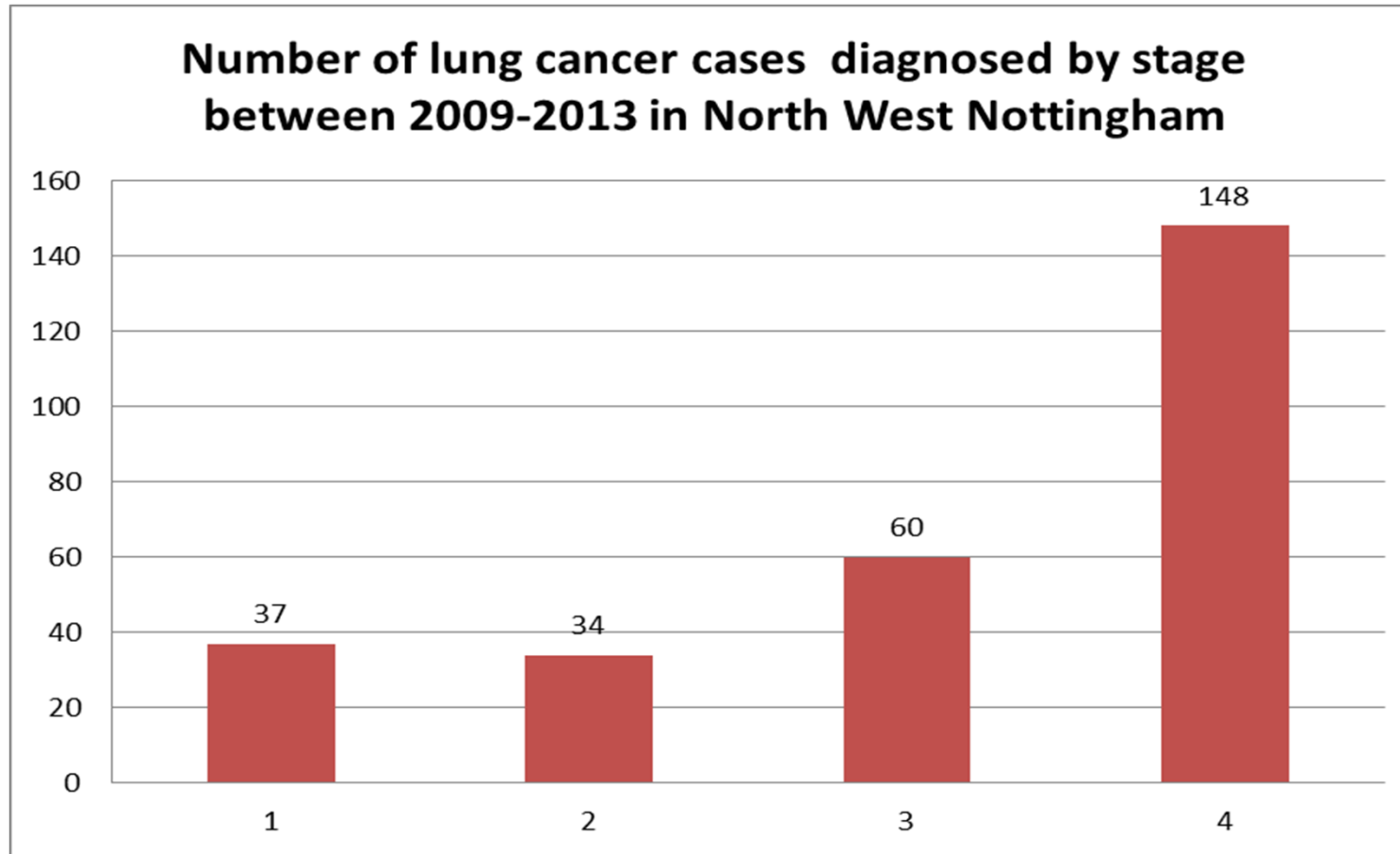
Figure 5: One-, Five- and Ten-Year Survival by Cancer Type



Stage and survival



Stage in North Nottingham



Summary

- High smoking rates especially in North Estates
- High incidence lung cancer and Long Term Conditions (CHD, COPD)
- High Mortality
- Late presentation / diagnosis = poor outcomes

Lung Health MOT

Aims:

- Improve early diagnosis of lung cancer & other respiratory disease
- Increase smoking quitters
- Raise awareness that early diagnosis can lead to good outcomes

Lung Health MOT

Pilot:

- GP practices in North Estates
- Starting in Bilborough
- Pts invited to clinic based on age and smoking history
- Clinic comprises of:
 - detailed risk assessment of cancer. Onward referral to Lung CT scan (will be provided by mobile scanner located at the practice)
 - Assessment for other lung disease using spirometry test. Onward referral to community respiratory team
 - Smoking cessation advice and referral to New Leaf
- Lung CT suspicious – rapid access to specialist clinic at the hospital.

Lung Health MOT

- To be cost effective, pilot requires high level of patient participation
- Comms / Education is vital