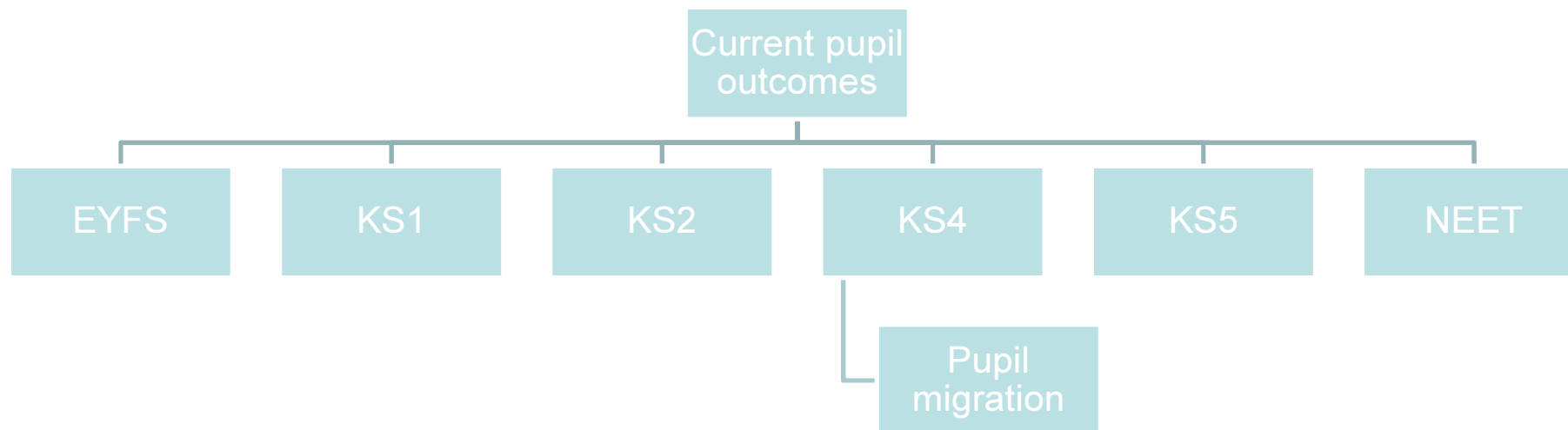


Achievement 2015



**NOTTINGHAM
CHILDREN'S
PARTNERSHIP**

PROUD OF NOTTINGHAM'S CHILDREN & YOUNG PEOPLE



**Nottingham
City Council**

Early Years Foundation Stage

EYFS

- Good Level of Development **58%**
- This is a significant (18%) improvement on 2013
- However we remain 142nd out of 152 LA's.
- The national average is 66%.
- The gap between Nottingham City and national has narrowed to 8% from nearly 14% in 2014.

Phonics at Year 1

Phonics Screening

- 69% met the expected standard at the end of Year One. This is a 2% improvement on 2014.
- The national average is 77% which is a 3% improvement on 2014
- This ranks the city joint 150th out of 150 LAs - the worst performing LA nationally.
- However only 46% of this cohort gained a GLD by the end of F2. They were very low performing at this stage.
- 23% more pupils in this cohort are now reaching nationally expected levels which is a significant improvement, This suggests that good progress has been made.
- Improvement has been sustained over the past 4 years from 48% in 2012 to 69% in 2015. This is also true for disadvantaged pupils from 39% in 2012 to 60% in 2015.
- Of the lowest performing schools the majority of them are LA maintained schools (8/10 of lowest scoring schools)

Key Stage 1

- We continue to see improvements in reading, writing and maths at KS1:
 - In Reading L2+ **86%** (+2% on 2014), national position 90% (no change on 2014)
 - Writing L2+ **81%** (+2% on 2014), national position 88% (+2% on 2014)
 - Maths L2+ **89%** (+2% on 2014), national position 93% (+1% on 2014)
 - At level 2b+ there have been improvements of 4% in reading, 3% in writing and 4% in maths.
 - At level 3+ we have also seen improvements of 3% in reading, and 1% in writing and maths.
 - Our disadvantaged pupils have shown continued improvement and are ranked 101st for reading, 108th for writing and 125th for maths from 150 LA's. Disadvantaged pupils are 2-3% behind disadvantaged pupils nationally in reading, writing and maths. The gap between disadvantaged pupils and all pupils continues to reduce and is now between 5-6%.
 - The gap between city pupils and national averages has reduced from 8% at EYFS to 5%* by the end of KS1 demonstrating good progress over time. (* average of the gap for the reading , writing and maths)

Key Stage 2

- **KS2 results often change after validation in November.**
 - **RWM L4+ 77%** (+1% on 2014), 118th out of 152 LAs, national position 80% (+1% on 2014) 'REVISED'
 - **RWM L4+ 75%** (-1% on 2014), 139th out of 152 LAs, national position 80% (+1% on 2014) PROVISIONAL
 - **Reading L4+ 85%** (-1% on 2014), 138th out of 152 LAs, national position 89% (no change on 2014) PROVISIONAL
 - **Writing L4+ 82%** (+1% on 2014), 146th out of 152 LAs, national position 87% (+2% on 2014) PROVISIONAL
 - In GPS L4+ **76%** (+3% on 2014), 132nd out of 152 LAs, national position 80% (+4% on 2014) PROVISIONAL
 - **Maths L4+ 85%** (no change on 2014), 113^h out of 152 LAs, national position 87% (+1% on 2014)
-
- At 4b+ we have seen an improvement of 1% in maths and 4% in GPS.
 - At Level 5 we have seen an improvement of 2% in writing and in GPS.

At primary level attainment gaps are closing

We would argue that in general and seen over time **children start school attaining levels which are well below those expected nationally.**

This remains the case at the end of EYFS despite having made rapid progress. By the end of KS1 attainment remains lower than average levels but the gap has closed.

By the end of KS2 the gap has continued to close and although attainment is still below national average the gap is smaller.

Attainment Gaps to National are Closing

EYFS: GLD Gap is 8% (City vs. National)

Phonics: Year One Gap is **8%**

KS1: Reading Gap is 4% (L2+)

Writing Gap is 7%

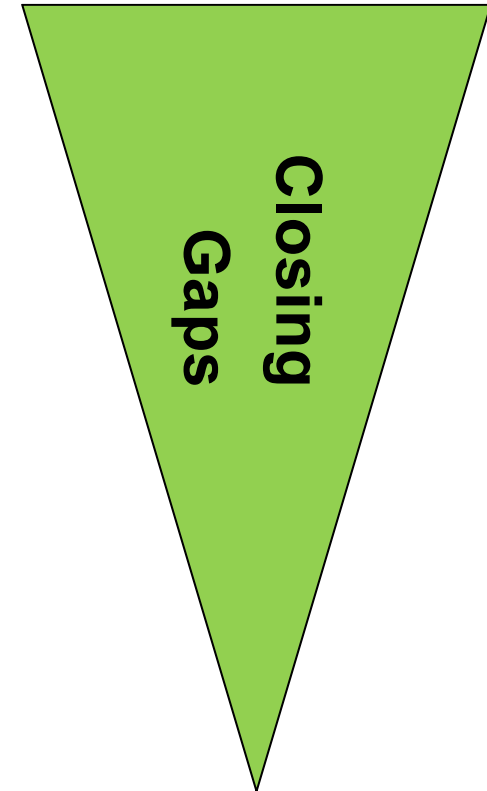
Maths Gap is 4%

KS2: RWM Gap is 5% (L4+)

Reading Gap is 4%

Writing Gap is 5%

Maths Gap is 2%



And for disadvantaged pupils?

And.. although the attainment (KS2) of Nottingham FSM6 pupils remains lower than Nottingham non FSM6 pupils they are very close to or better than national FSM pupils...

- For RWM **70%** of Nottingham FSM6 pupils achieve L4 (national **70%**)
- For Reading **82%** of Nottingham FSM6 pupils achieve L4 (national **83%**)
- For Writing **78%** of Nottingham FSM6 pupils achieve L4 (national **79%**)
- For Maths **82%** of Nottingham FSM6 pupils achieve L4 (national **80%**)

Expected Progress

We were pleased to note that our pupils make good progress between Key stages 1 and 2. Importantly progress measures by the end of KS2 are comparable to national averages and above statistical neighbour averages.

The percentages of pupils making at least expected progress:

- **Reading: 90%** - nationally this is **91%**
- **Writing: 94%** - nationally this is **94%**
- **Mathematics: 90%** - nationally this is **90%**

This ranks the city as 104th for reading, 71st for writing and 69th for maths (for expected levels of progress)

The percentage of pupils making greater than expected progress:

- **Reading:** All pupils exceed national average by 2% (35% vs. 33%)
- **Writing:** All pupils exceed national average by 1% (37% vs. 36%)
- **Maths:** All pupils exceed national average by 2% (36% vs. 34%)

Key Stage 1-2 Progress / VA scores

Progress / VA scores demonstrate we are having significant impact across the city...

- VA scores in 2015 for Nottingham for **all subjects** is 100.0 putting us in the 41st percentile rank.
- For **Maths** the VA score is 100.1 putting us in the 41st percentile rank.
- For **Reading** the VA score is 99.9 placing us in the 60th percentile rank.
- For **Writing** the VA score is 100.0 placing us in the 35th percentile rank.

Key Stage 4

Pupils achieving 5+ A*-C GCSEs (or equivalents) including English and Maths:

- Provisional data puts 41.5% of Nottingham's pupils achieving this measure
- Nottingham is 11.3 percentage points away from the national position (52.8%), a larger gap to that recorded in 2013/14
- This ranks Nottingham joint 149th nationally, with only Knowsley below (out of 151 LAs). In 2014 Nottingham was ranked 148th with 3 LAs below
- Nottingham is 7.0 percentage points away from its group of statistical neighbours (SN) average (48.5%) and 3.6 percentage points away from the next ranked LA
- Nottingham is ranked 11th (of 11) in its SN group (bottom)



Key Stage 4 continued

Pupils achieving 5+ A*-C GCSEs (or equivalents):

- Provisional data puts 48.6% of Nottingham's pupils achieving this measure
- Nottingham is 15.6 percentage points away from the national position (64.2%), a larger gap than that recorded in 2013/14 (12.9%)
- This ranks Nottingham 150th nationally, with only Knowsley below (out of 151 LA's). In 2014 Nottingham was ranked 149th
- Nottingham is 10.0 percentage points away from its group of statistical neighbours (SN) average (59.0%)
- Nottingham is ranked 11th in its SN group (bottom)

KS4 Pupils achieving expected progress in Maths

Provisional data puts 52.1% of Nottingham's pupils achieving this measure

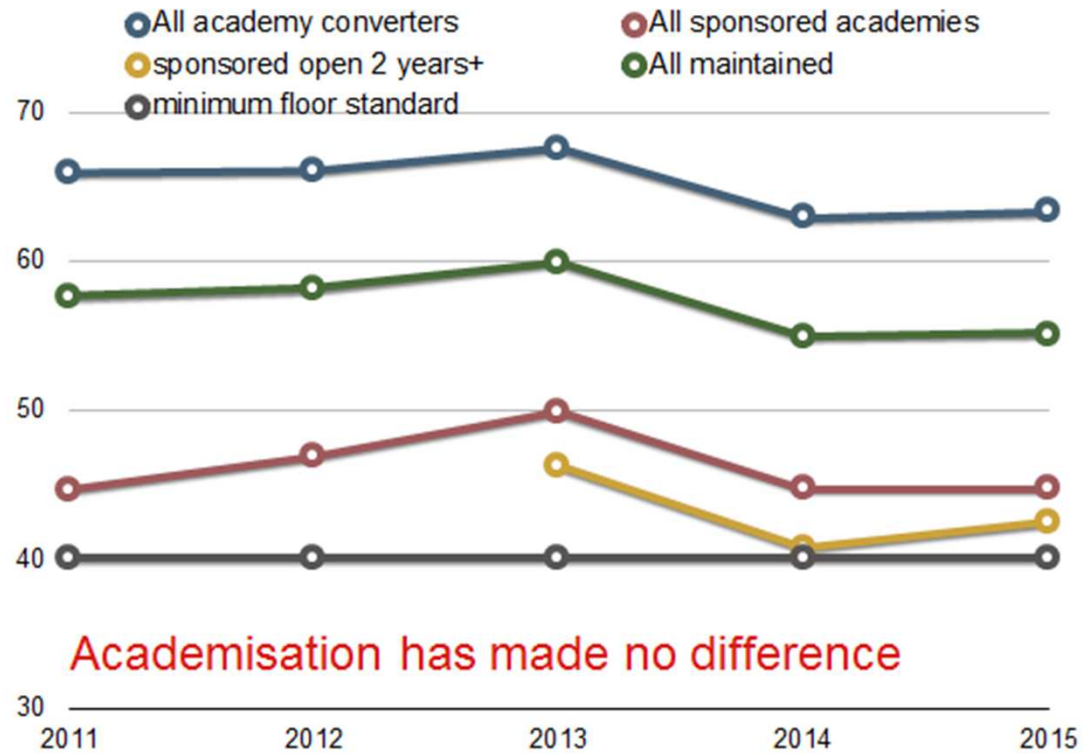
- Nottingham is 15.6 percentage points away from the national position (67.7%)
- This ranks Nottingham 149th nationally (out of 151 LAs)
- Nottingham is 8.8 percentage points away from its group of statistical neighbours (SN) average (60.7%)
- Nottingham is ranked 11th in its SN group

KS4 Pupils achieving expected progress in English

Provisional data puts 58.1% of Nottingham's pupils achieving this measure

- Nottingham is 13.2 percentage points away from the national position (71.3%)
- This ranks Nottingham 149th nationally (out of 151 LAs)
- Nottingham is 8.4 percentage points away from its group of statistical neighbours (SN) average (66.5%)
- Nottingham is ranked 11th in its SN group

National Picture 2011 - 2015



Academisation has made no difference

% 5 A*-C EM at GCSE



	GCSE 2011	GCSE 2015	Ofsted good and better
All secondary schools	59%	55%	51%
All academy converters	65.9%	63.3%	
All sponsored academies	44.6%	44.7%	
All maintained schools	57.6%	55.1%	
Nottingham	46.7%	41%	67%*

* of those inspected (5 not yet inspected)

Current progress is good in higher proportion of secondary schools than is seen nationally indicating Nottingham's attainment will catch-up over time.



Nottingham relative rankings (out of 151)

	2011	2012	2013	2014	2015
5 A*-C EM Ranks	145th	143rd	143rd	148th	149th
%5 A*-C EM	46.7%	49.6%	50.3%	44.6%	41.5%
Ebacc	113th	125th	139th	142nd	138th
FSM gap	34th	37th	33rd	37th	68th
Attendance	147th	141st	142nd	141st	NE
Attendance %	92%	93.1%	93%	94%	NE



Summary

- Nottingham has no secondary schools in an Ofsted category of concern.
- Progress of students currently in our secondary schools, as judged by Ofsted, is 'good' and higher than national.
- Nottingham has the best rate of conversion from RI to good (according to Ofsted's regional director)
- DfE research in November 2015 shows that FSM eligibility nationally, results in attainment on average one grade below non FSM. The impact of disadvantage can be shown from the end of EYFS.
- We are in the top third of LAs for closing the FSM gap.
- We are engaging well with our academies, even when difficult messages have to be conveyed. 2015 results reviewed with academy leaders and a GCSE recovery plan and EIB targets agreed for 2016.



Gap between pupils receiving the Pupil Premium (disadvantaged) and their peers in achieving expected level at Key Stage 4 (or by age 19)

Gap between pupils receiving the Pupil Premium (disadvantaged) and their peers in achieving expected level at Key Stage 4 (or by age 19) USING fsm6 data;

y age 19)

% 5+ A*-C grades including English and Maths, 2015 provisional

- Nottingham All Pupils: 41.5
- Nottingham FSM6: 28.1
- Nottingham Non-FSM6 (other): 51.8

- National: All Pupils: 52.8
- National FSM6: 36.1
- National Non FSM6 (other): 63.4

The DfE gap measure is LA FSM6 pupils to National other, so: Nottingham FSM6 (28.1) – National other (63.4) = **-35.3**. This ranks us as **68th** out of **152 LA's**.



Gap between SEN and non-SEN pupils in achieving Key Stage 2 English and Maths threshold

In general a gap remains between SEN and non-SEN pupils in maths, reading and writing. However the SEN gap 2014-2015 has reduced by 6% in maths, 4% reading and 3% in writing.

The SEN gap with all is below the national SEN gap with all in maths, reading and writing.

Gap between SEN and non-SEN pupils in achieving Key Stage 2 English and Maths threshold

The SEN Gap with all pupils achieving 5 A*-C GCSEs including English and Maths has reduced by 2% 2014-2015
The SEN gap with all is below the national SEN gap with all and has continued to widen 2012-2015.



Children in Care achieving the expected level

% Children in Care achieving the expected level (RWM combined) at Key Stage 2, 2015 provisional

Nottingham Looked After Children (all, resident in and out of LA): **54.5%** (in 2014 the score was 48%)
The LA RAISEonline report, table 2.6.1 in 2015 (2.7.1 in 2014) reports;

- For Mathematics, 80% CLA pupils made the expected progress in 2015 (up 5% in one year). This is +2% above the National Average (it was +1%).
- For Reading, 80% CLA pupils made the expected progress in 2015 (up 5%). This is -2% below the National Average (it was -6%).
- For Writing, 80% CLA pupils made the expected progress in 2015 (no change). This is -4% below the National Average (it was -2%). The cohort size was 25 in 2015 (20 in 2014).

% Children in Care achieving 5 or more A*-C GCSEs, 2015 provisional

- Nottingham Looked After Children (all, resident in and out of LA): **6.5%** (from a cohort of 31 pupils, in 2014 the score was 13% out of 39 pupils)

Pupil Context

Contextual barriers for consideration:

- It is worth noting that in the latest **Index of Multiple Deprivation Local Authority District Results** Nottingham ranks 8th most deprived out of 326 Local Authority districts in England. This compares with ranks of 20th out of 326 districts in the 2010 index and 13th out of 354 districts in the 2007 index. Nottingham ranks fourth most deprived of the English Core Cities. Some districts in our city feature in the lowest 100 Super Output Areas.
- We experience high levels of turbulence and mobility within our schools.
- The proportion of children who speak English as an additional language and are at early stages of learning English are high- 10% above national averages (EAL- 29.3% compared to 19.4% nationally)
- Teacher recruitment remains a challenge at all phases and stages. This is particularly significant at subject leader and departmental level, as well as with School Leadership.
- Negotiating a strategic response to city wide priorities has been complicated by the wide range of stakeholders, sponsors and partnerships that have evolved over the last three years. Clarifying roles, responsibilities and levels of accountability has been an important undertaking by the LA.
- The proportion of disadvantaged pupils is high and increasing. It is 11% above the national average. The number of pupils eligible for pupil premium funding has gone up by 603 pupils over the last 2 years. Primary State funded FSM eligibility 2015 was 26%- ranks 139/150 LA's. National average is 15.6%
- Initial analysis of overall attainment figures are affected by the relative proportions of disadvantaged: non disadvantaged pupils.
- We have a high proportion of Children who experience difficulties in their home lives. We have nearly twice as many children subject to a child protection plan as seen nationally, twice as many pupils classified as children in need and 1/3rd more Looked After Children. One in three children under the age of 16 lives in a low income family compared to 1 in 5 seen nationally,
- Another feature of our city includes the significant percentage of higher performing pupils who choose to transfer out of the city for secondary provision
- Nottingham has also improved its ranking nationally for pupils receiving their first choice of school:
Primary: up from 131st out of 152 local authorities in 2014 to 116th in 2015
Secondary: up from 100th out of 152 local authorities in 2014 to 79th in 2015



Key Stage 5

For candidates who attained level 3 (2 or more A Level passes or equivalents):

- Provisional figures show that 84.3% of candidates achieved this measure in 2015, this is an increase of 1.4 percentage points on the 2014 provisional figure (82.9%)
- The England average is 89.1%, an improvement of 0.5 percentage points on the 2014 provisional figure (88.6%)
- The gap between Nottingham and the England average is 4.8 percentage points, in 2014 it was 5.7 percentage points
- Nottingham is ranked 117th nationally (out of 150 LAs)
- Nottingham's Statistical Neighbours average is also 84.3% and Nottingham is ranked 6th (out of 11)

In Education Employment or Training

	Number of 16/17 year olds known to the LA	Proportion of 16 and 17 year olds recorded as participating in:							Change in year		Current activity not known to the LA
		Full time education	Apprenticeship	Work based learning	Part time education	Employment combined with training	Other	Total			
England	1,159,970	83.2%	4.2%	1.3%	0.6%	0.6%	0.3%	90.2%	0.4%	►	4.8%
Bristol	8,090	77.2%	4.4%	1.4%	0.1%	0.3%	0.1%	83.5%	-0.8%	▼	7.9%
Birmingham	25,540	77.5%	2.8%	0.6%	0.0%	0.5%	1.3%	82.7%	0.4%	►	11.5%
Nottingham	6,680	84.3%	4.5%	1.7%	0.0%	0.9%	0.8%	92.3%	1.0%	▲	1.2%
Leeds	14,990	81.5%	4.5%	2.2%	0.1%	1.2%	0.4%	89.9%	0.1%	►	3.9%
Sheffield	11,800	77.2%	8.8%	4.0%	0.0%	0.4%	0.3%	90.7%	1.2%	▲	2.9%
Liverpool	10,120	70.3%	4.7%	2.9%	0.0%	0.3%	0.4%	78.6%	-11.6%	▼	15.0%
Manchester	10,650	85.1%	3.0%	2.3%	0.0%	0.2%	0.1%	90.7%	0.0%	▼	2.8%
Newcastle	5,730	81.4%	4.9%	3.0%	0.0%	1.7%	0.3%	91.2%	1.8%	▲	2.4%
Nottingham Core City Ranking		2 nd	=3 rd	6 th	=3 rd	2 nd	1 st	1 ST	1 st		1 st



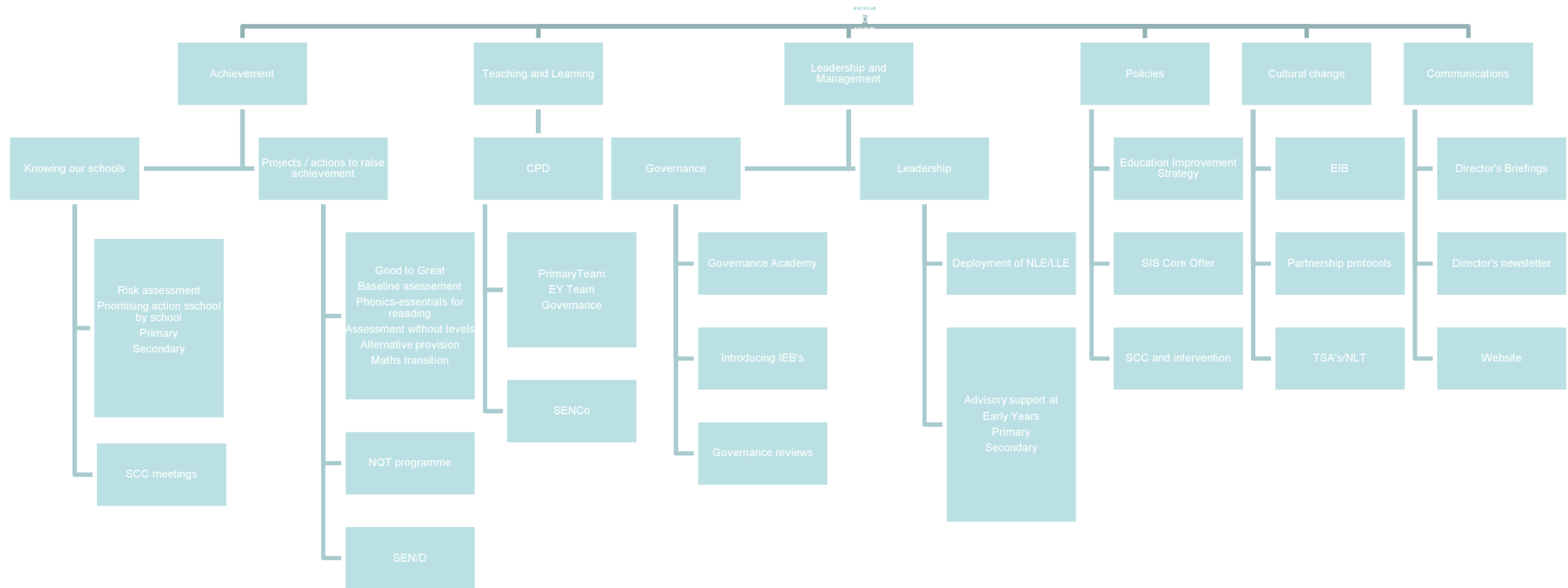
**NOTTINGHAM
CHILDREN'S
PARTNERSHIP**

PROUD OF NOTTINGHAM'S CHILDREN & YOUNG PEOPLE



**Nottingham
City Council**

What are we doing about it?



**NOTTINGHAM
CHILDREN'S
PARTNERSHIP**

PROUD OF NOTTINGHAM'S CHILDREN & YOUNG PEOPLE



**Nottingham
City Council**